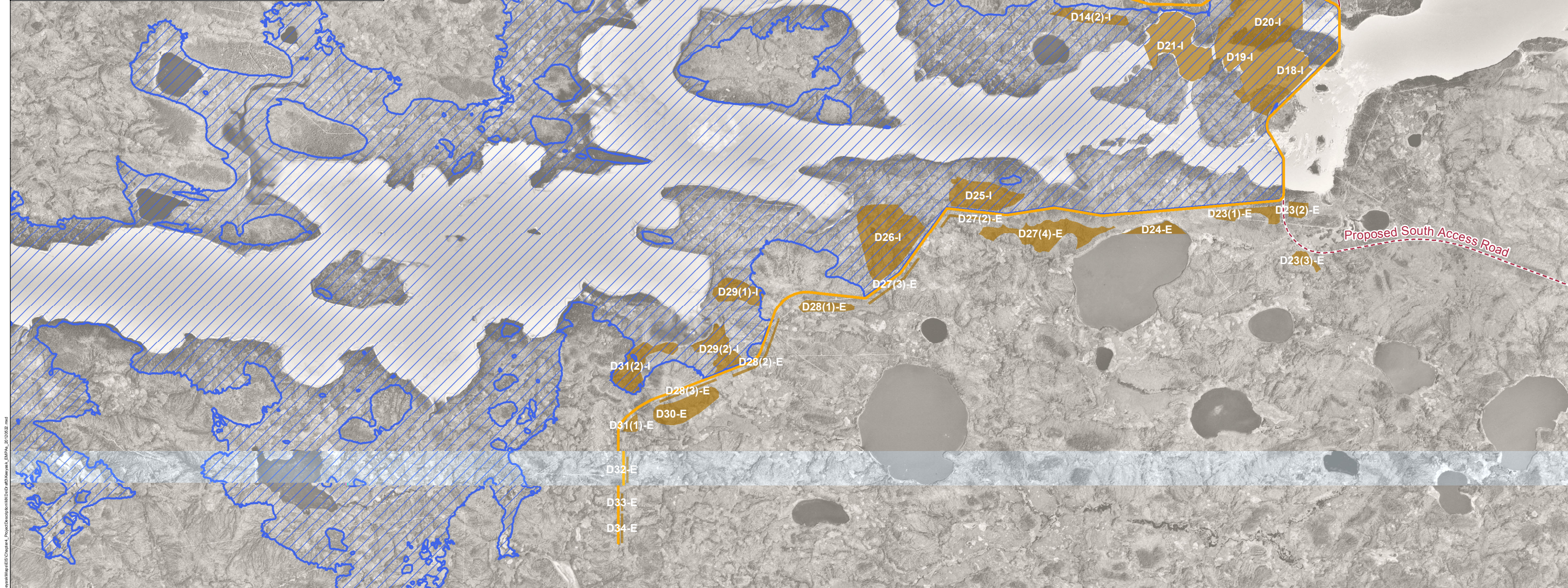
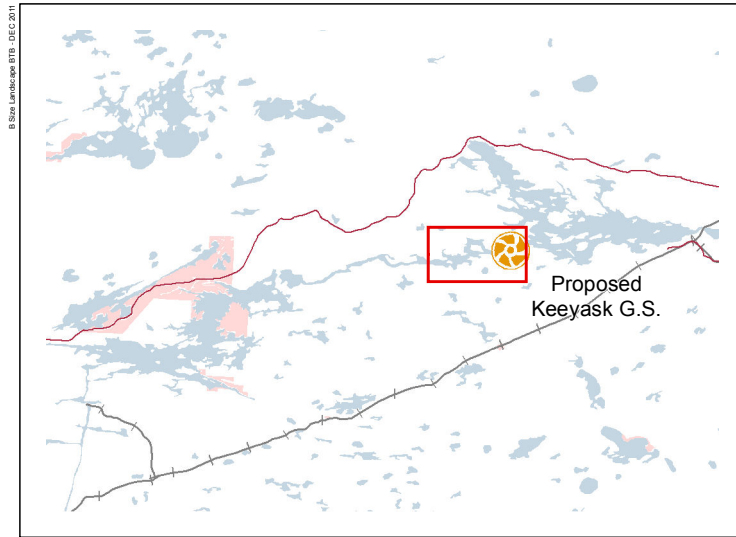


DATA SOURCE: Manitoba Hydro; Government of Manitoba; Government of Canada		
CREATED BY: Manitoba Hydro - Hydro Power Planning - GIS & Special Studies		
COORDINATE SYSTEM: UTM NAD 1983 Z15N	DATE CREATED: 03-AUG-11	REVISION DATE: 18-JUN-12
VERSION NO: 2.0	QA/QC: APPROVED	

Legend			
	Generating Station (Planned)		Highway
	Generating Station (Existing)		Access Road
	Converter Station		Proposed Access Road
	Keeyask Principal Structures		Rail
			Transmission Line
			First Nation Reserve
			Local Government District
			Resource Management Area

# Project Location

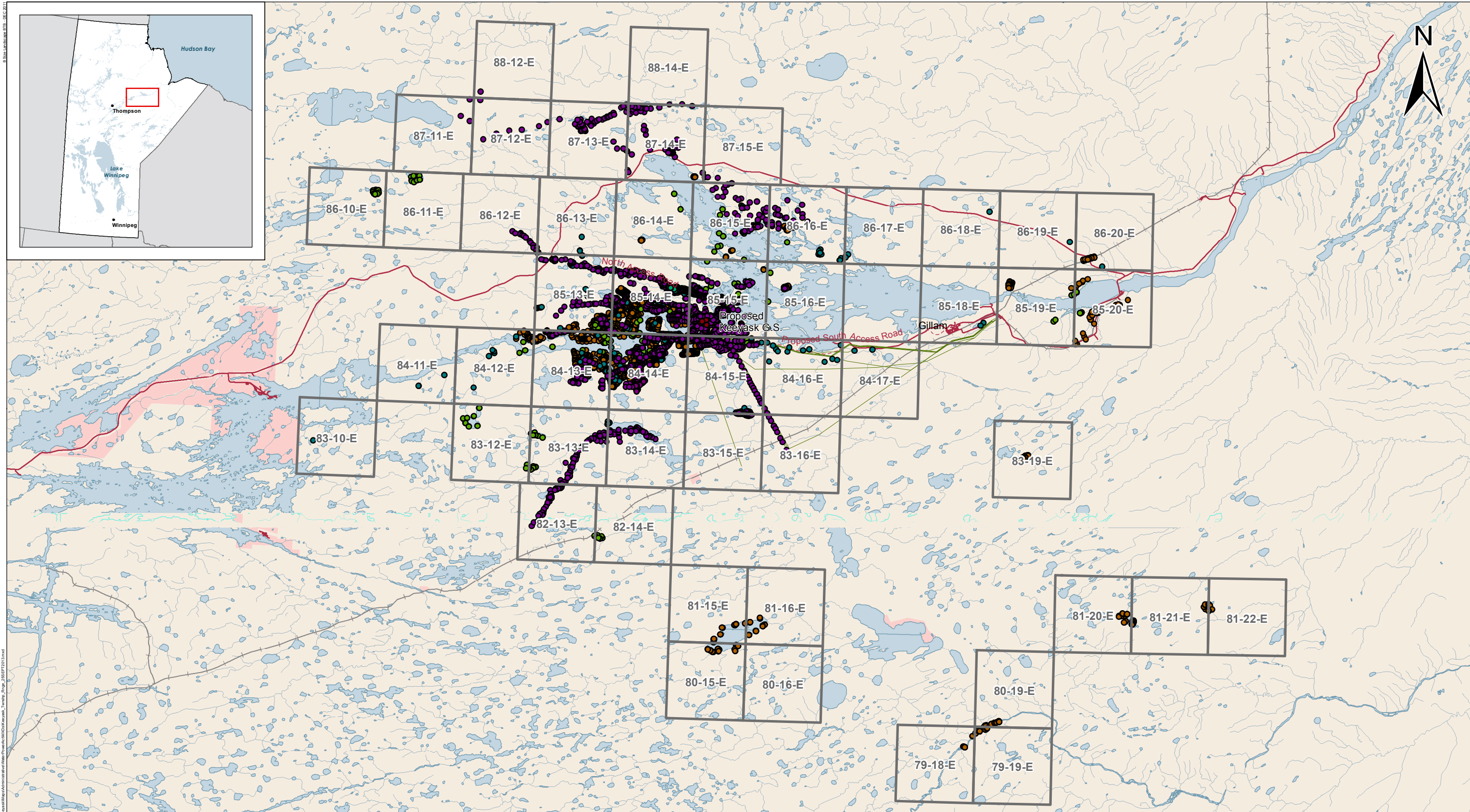


<b>DATA SOURCE:</b> Manitoba Hydro; Government of Manitoba; Government of Canada; KGS Areas; Manitoba Hydro 1999 1m Black & White DOI		
<b>CREATED BY:</b> Manitoba Hydro - Hydro Power Planning - GIS & Special Studies		
<b>COORDINATE SYSTEM:</b> UTM NAD 1983 Z15N	<b>DATE CREATED:</b> 09-FEB-12	<b>REVISION DATE:</b> 22-MAY-12
<b>VERSION NO.:</b> 2.0	<b>QA/QC:</b> APPROVED	

<b>Legend</b>
Excavated Material Placement Area
Access Road
Proposed Access Road
Keeyask Principal Structures
Initial Flooded Area (159 m)

WULS-1-00195-07310-D-0002\_0001

## Excavated Material Placement Areas



<b>DATA SOURCE:</b> Manitoba Hydro; Government of Manitoba; Government of Canada			
<b>CREATED BY:</b> Manitoba Hydro - Hydro Power Planning - GIS & Special Studies			
<b>COORDINATE SYSTEM:</b> UTM NAD 1983 Z15N	<b>DATE CREATED:</b> 25-SEPT-13	<b>REVISION DATE:</b> 11-OCT-13	
	<b>VERSION NO.:</b> 1.0	<b>QA/QC:</b>	

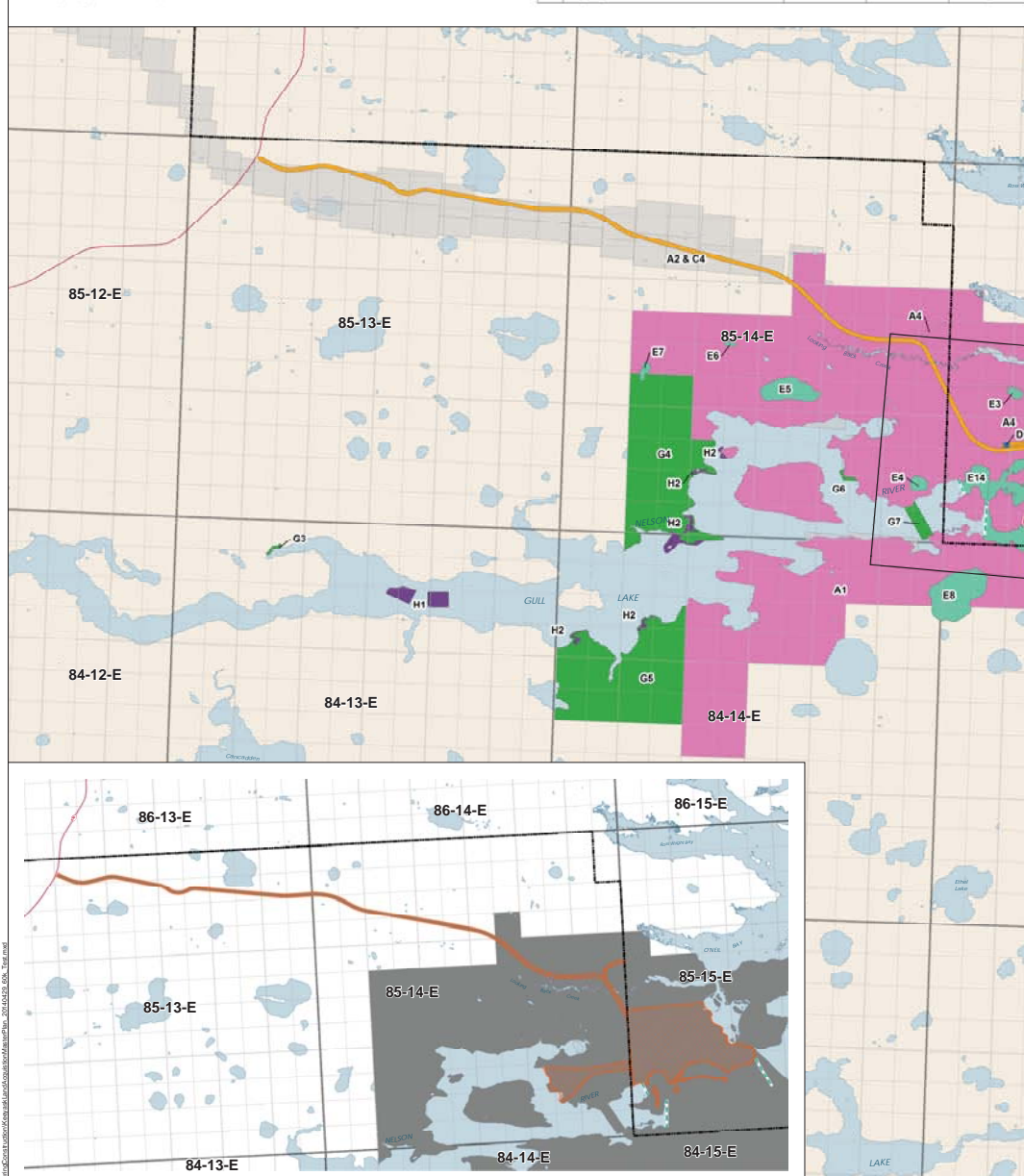
Legend	
	Section Grid
	Construction Power Station
	Switching Station
	Keeyask Transmission
	Keeyask Principal Structures
	Access Road
	Proposed Access Road
	Highway
	Rail

WULS-1-00195-07310-D-0003\_0001

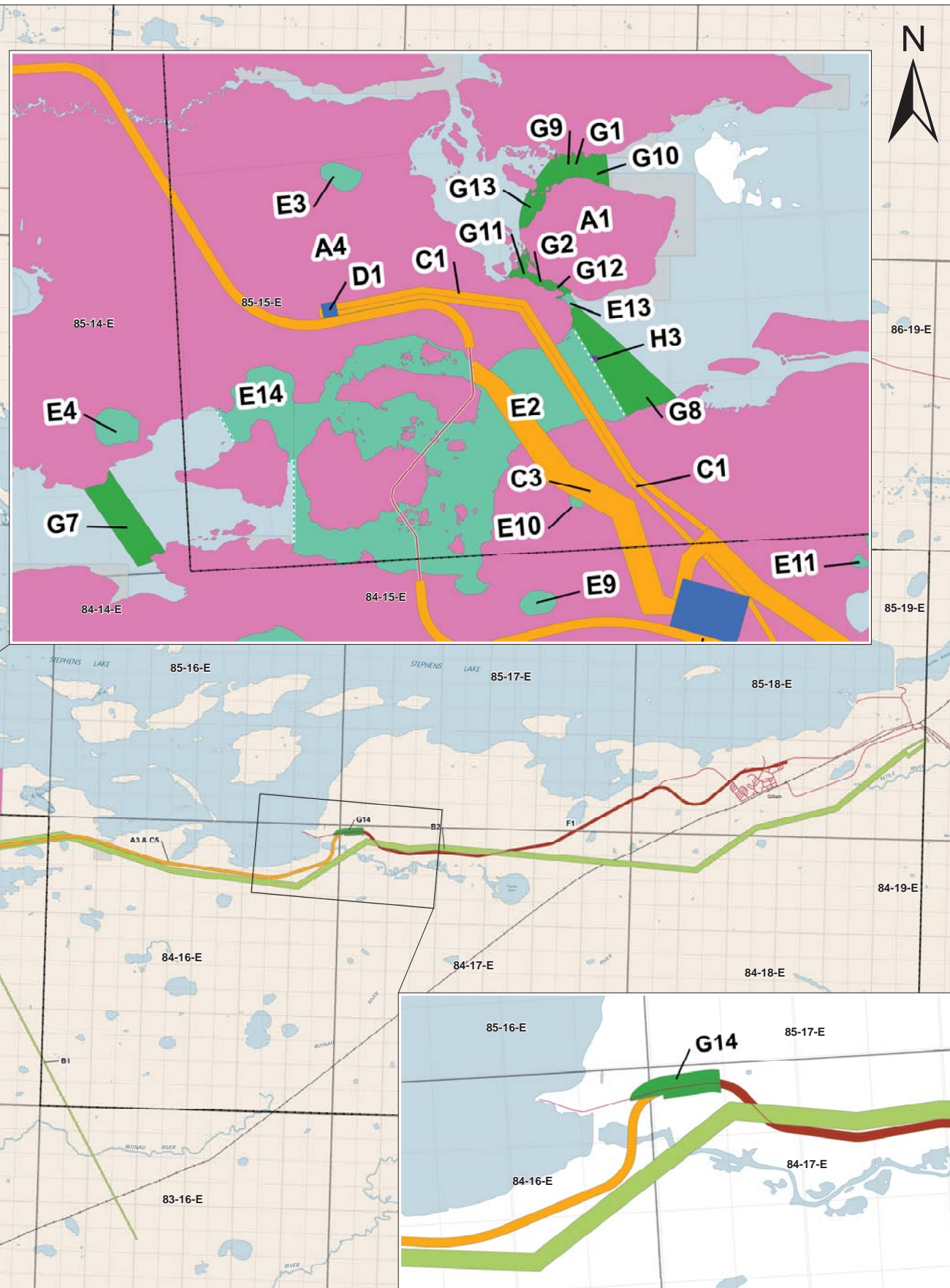
**Keeyask Generating Station**  
 WPA Survey Permit  
 Location of Field Exploration Studies

Ownership by Keyask Hydropower Limited Partnership			
ID	Description	WHPD File	Execution Required by
A1	Generating Station	2009-0137-03	July 2014
A2	North Access Road - Leased Land	2009-0137-1 - Lease pursuant to WPA	July 2014
A3	South Access Road	2009-0137-1 - Lease pursuant to WPA	July 2014
A4	Leasehold Interest in Project Area with a right to purchase and regulatory approvals for the 20.0 acre parcel	2009-0137-1 - Lease pursuant to WPA	July 2014

Water Parcel Owned by Keyask Hydropower Limited Partnership			
ID	Description	WHPD File	Execution Required by
E1	Water Parcel - Nelson River upstream of principle structures		July 2014
E2	Water Parcel - Nelson River downstream of principle structures		July 2014
E3	Water Parcel - North of Nelson River		July 2014
E4	Water Parcel - North of Nelson River		July 2014
E5	Water Parcel - North of Nelson River		July 2014
E6	Water Parcel - North of Nelson River		July 2014
E7	Water Parcel - North of Nelson River		July 2014
E8	Water Parcel - North of Nelson River		July 2014
E9	Water Parcel - South of Nelson River		July 2014
E10	Water Parcel - South of Nelson River		July 2014
E11	Water Parcel - South of Nelson River		July 2014
E12	Water Parcel - South of Nelson River		July 2014
E13	Water Parcel - South of Nelson River		July 2014
E14	Water Parcel - Downstream Road Launch and Barge Landing	2009-0137-03	July 2014
E15	Water Parcel - Extension	2009-0137-03	July 2014



General Permits			
ID	Description	WHPD File	Execution Required by
G1	General Permit - Causeway to Borrow Area G1	2009-0137-02	July 2014
G2	General Permit - Causeway to Borrow Area G2	2009-0137-02	July 2014
G3	General Permit - Barge Landing Near Borrow Area B1	2009-0137-04	July 2014
G4	General Permit - North Access to Nelson River	2009-0137-04	July 2014
G5	General Permit - South Access to Nelson River	2009-0137-04	July 2014
G6	General Permit - Construction Upstream Road Launch	2009-0137-03	July 2014
G7	General Permit - Public Safety - Ice Boom	2009-0137-01	July 2014
G8	General Permit - Public Safety - Safety Booms - Downstream Reach	2009-0137-03	July 2014
G9	General Permit - Public Safety - Safety Booms - Causeway G3	2009-0137-03	July 2014
G10	General Permit - Public Safety - Safety Booms - Causeway G2	2009-0137-03	July 2014
G11	General Permit - Public Safety - Safety Booms - Causeway G1	2009-0137-03	July 2014
G12	General Permit - Public Safety - Safety Booms - Causeway G6	2009-0137-03	July 2014
G13	General Permit - Public Safety - Safety Booms - Causeway G6	2009-0137-03	July 2014
G14	General Permit - Public Safety - Safety Booms - Causeway G6	2009-0137-03	July 2014



DATA SOURCE:  
Manitoba Hydro; Government of Manitoba; Government of Canada; Manitoba Hydro SCI 00195-07330 (Keeyask Generating Station Land Acquisition Master Plan)

CREATED BY:  
Manitoba Hydro - Hydro Power Planning - GIS & Special Studies

COORDINATE SYSTEM:  
UTM NAD 1983 Z15N

DATE CREATED:  
10-AUG-12

REVISION DATE:  
29-MAY-14

VERSION NO:  
5.0

DATE APPROVED:  
APPROVED

**Legend**

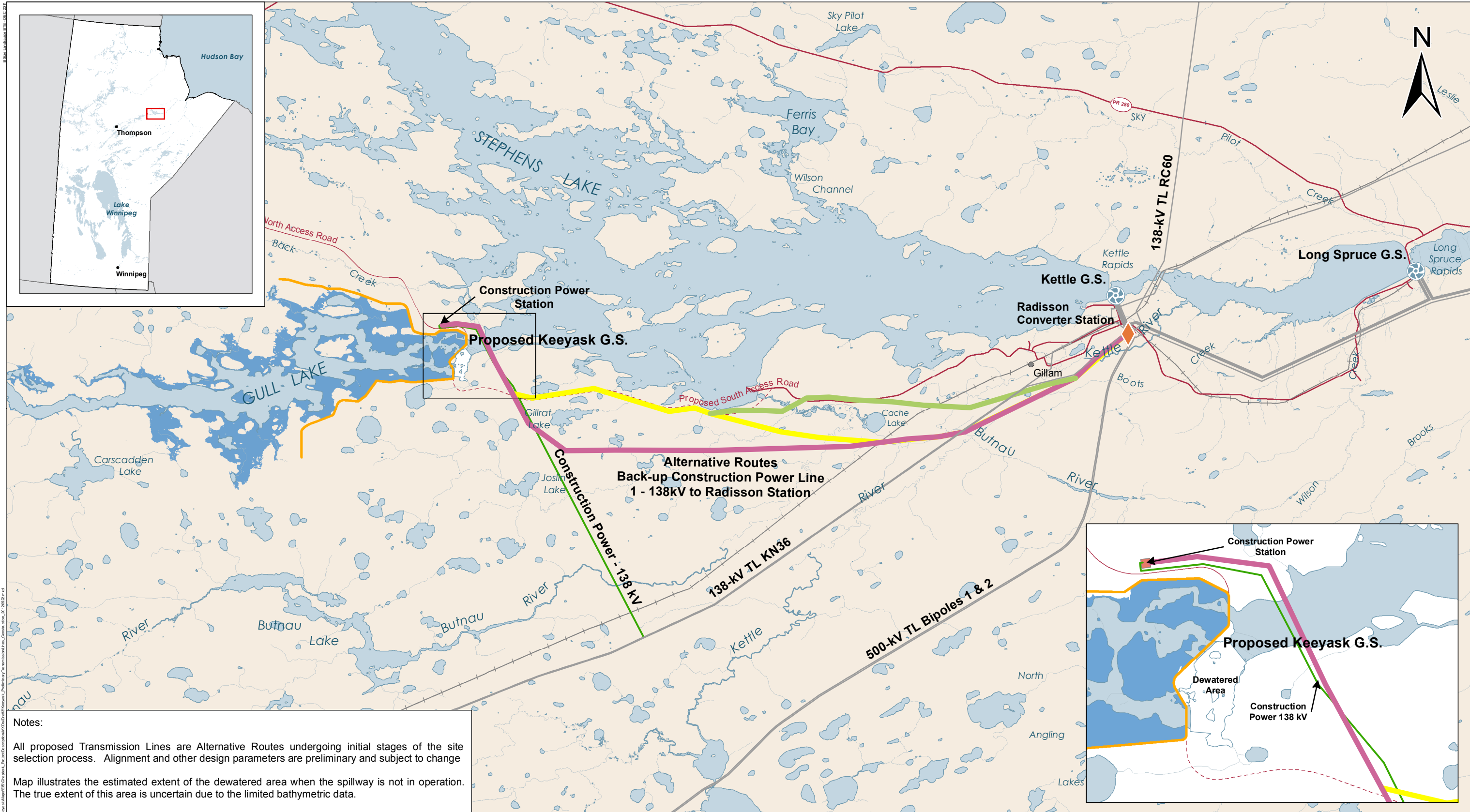
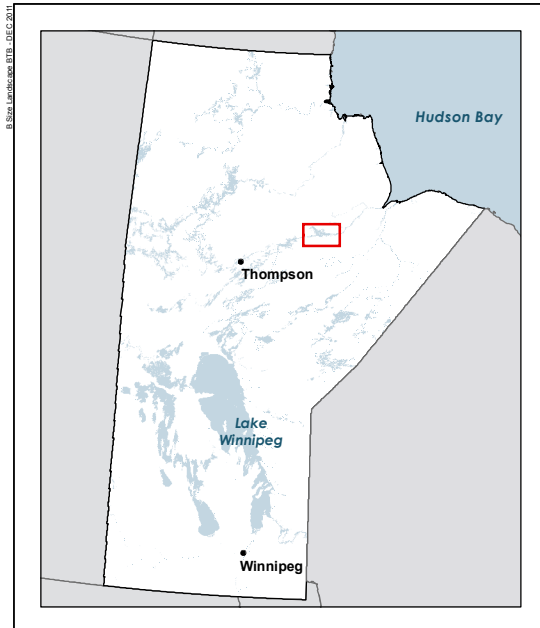
**Association of Land Required Project(s)**

- Ownership by Keeyask Hydropower Limited Partnership
- Easement from Crown to Manitoba Hydro
- Ownership by Keeyask Hydropower Limited Partnership and Easement from Keeyask Hydropower Limited Partnership to Manitoba Hydro
- Ownership by Manitoba Hydro
- Waterlot Owned by Keeyask Hydropower Limited Partnership
- Ownership by Crown
- General Permit

**Other Symbols:**

- Kettle Severance Line
- Deck Agreement
- Water Parcel Boundary
- Quarry Leases
- Section Grid
- Township Range Grid
- Waterbody
- Highway
- Leased Lands
- Required Lands

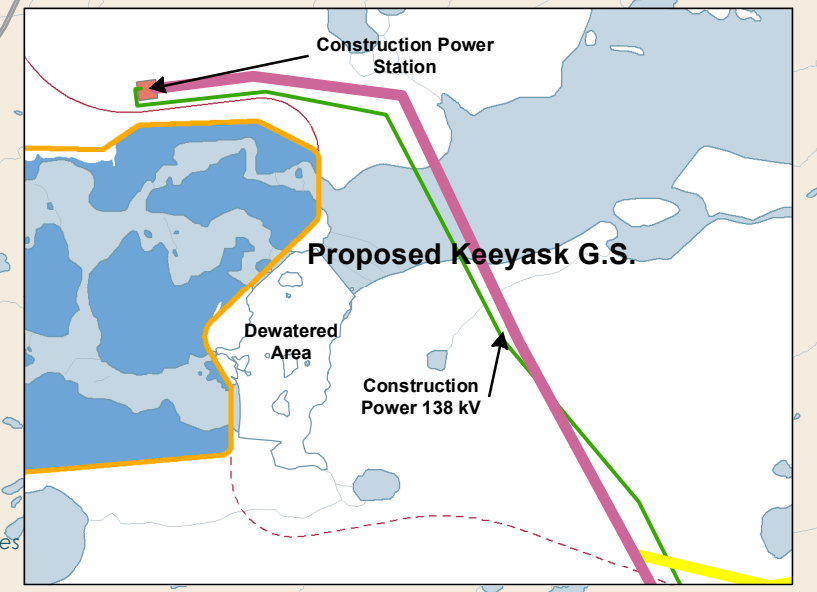
# Keeyask Land Acquisition Master Plan



**Notes:**

All proposed Transmission Lines are Alternative Routes undergoing initial stages of the site selection process. Alignment and other design parameters are preliminary and subject to change

Map illustrates the estimated extent of the dewatered area when the spillway is not in operation. The true extent of this area is uncertain due to the limited bathymetric data.



<b>DATA SOURCE:</b> Manitoba Hydro; Government of Manitoba; Government of Canada; Manitoba Hydro - Transmission; Manitoba Hydro - Water Resource Engineering (PP_95perc_4327_159_shore_rev5)		
<b>CREATED BY:</b> Manitoba Hydro - Hydro Power Planning - GIS & Special Studies		
<b>COORDINATE SYSTEM:</b> UTM NAD 1983 Z15N	<b>DATE CREATED:</b> 13-FEB-12	<b>REVISION DATE:</b> 22-MAY-12
<b>VERSION NO.:</b> 2.0	<b>QA/QC:</b> APPROVED	

<b>Legend</b>		
Transmission Line (Existing)	Generating Station (Existing)	Potential Dewatered Area
Construction Power Line (Proposed)	Converter Station (Existing)	Initial Flooded Area (159 m)
<b>Back-up Construction Power Transmission Line</b>		
Route Alternative Option A	Existing Water Level	Highway
Route Alternative Option B	Keyask Principal Structures	Access Road
Route Alternative Option C	Transmission Substation (Proposed)	Proposed Access Road

WULS-1-00195-07310-D-0005\_0001

## Keyask Transmission Project

Preliminary Transmission Corridors  
During Keyask Generation Project  
Construction Phase