



# VISITOR'S GUIDE 2024-25







# We're Hiring!

**Start your career in provincial parks this summer.**

Opportunities to work in your local park:

- Park Attendants
- Park Maintenance Workers
- Park Interpreters
- Green Team Youth Employment

▶ **Visit [manitobaparks.com](http://manitobaparks.com) for job opportunities.**





# WELCOME TO MANITOBA PARKS

As Minister of Environment and Climate Change, I am pleased to welcome you to Manitoba's provincial parks. A spectacular variety of landscapes provide the perfect setting for endless outdoor adventures throughout the province.

Since the establishment of the first four provincial parks in 1961, Manitoba's system of provincial parks has grown to 93 parks across the province with something for everyone to enjoy. I am proud that our government's Budget 2024 is investing in more staffing for parks so that all Manitobans can enjoy our beautiful provincial parks.

Discover the stories of Indigenous peoples or trace the footsteps of voyageurs and fur traders at our numerous heritage sites. Become inspired by our park stories and places with a knowledgeable Park Interpreter on a guided hike.

Whether lounging on pristine beaches by day or gathering around crackling campfires under the stars by night, there's an adventure waiting for you. With thousands of kilometers of trails, embark on exhilarating hikes, scenic bike rides, thrilling ski runs, or tranquil snowshoeing excursions across all four seasons.

As an avid park user myself and with my family, I look forward to seeing Manitobans out in our parks this year. How ever you choose to explore, you'll find a lifetime of memories in Manitoba's provincial parks.

Honourable Tracy Schmidt  
Minister of Environment and Climate Change

## CONTACT US

**Manitoba Parks**  
**4th Floor - 258 Portage Avenue**  
**Winnipeg, MB R3C 0B6**

**Email: [parks@gov.mb.ca](mailto:parks@gov.mb.ca)**  
**Phone: 1-800-214-6497**

**[manitobaparks.com](http://manitobaparks.com)**

**Connect with #ManitobaParks**



*Cover image: Elk Island Provincial Park*





# HEALTHY BY NATURE

## Outdoor recreation in all four seasons

### Hiking

Take a hike on thousands of kilometers of trails, ranging from short one-hour hikes to a half-day adventure to overnight backcountry excursions. Discover something new on one of our many self-guiding trails featuring interpretive signs.

### Cycling

From paved routes to backcountry adventures to winter fat biking, mountain biking can be a thrilling way to experience our parks.

### Canoeing and Kayaking

Paddling a canoe route into a remote lakeside campsite can be the adventure of a lifetime.

### Winter Trails

Several parks feature groomed and tracked cross-country ski trails, allowing you to glide effortlessly through the snow on your favourite trails. We also have trails for skate skiing, skijoring, dogsledding, snowshoeing, fat biking and winter hiking. There are also hundreds of kilometres of groomed snowmobile trails. Be sure your outing includes a stop at a warm-up shelter for a hot lunch!

### Viewing Wildlife and Wildflowers

Manitoba's diverse habitats provide excellent opportunities to view wildlife and wildflowers. Every spring and summer hundreds of native plants, shrubs and grasses unfold and bloom and a great variety of animals are active year-round.

### Hunting, Fishing and Trapping

Many of our parks are an angler's paradise with lakes and rivers teeming with trophy fish. Some of our larger parks with backcountry and wilderness areas are also open to hunting and trapping. Check regulations at the local park office before your outdoor pursuits.

For more information on recreational activities in Manitoba Parks, visit [manitobaparks.com](http://manitobaparks.com).

### Take Only Pictures, Leave Only Footprints

Practice the principles Leave No Trace to minimize negative impacts on parks and the natural landscape.

- Plan ahead and prepare**
- Travel and camp on durable surfaces**
- Dispose of waste properly**
- Leave what you find**
- Minimize campfire impacts**
- Respect wildlife**
- Be considerate of other visitors**

By following these seven principles when recreating in provincial parks, we can ensure that everyone has a positive outdoor experience.



# PLANNING YOUR VISIT

Refer to the following tourism organizations to help you with your trip planning details.

**Travel Manitoba:** [travelmanitoba.com](http://travelmanitoba.com)

## REGIONAL TOURISM ASSOCIATIONS:

**Interlake:** [interlaketourism.com](http://interlaketourism.com)

**Central:** [centrallmbtourism.ca](http://centrallmbtourism.ca)

**Parkland:** [parklandtourism.com](http://parklandtourism.com)

**Westman:** [tourismwestman.ca](http://tourismwestman.ca)

**Eastman:** [eastmantourism.ca](http://eastmantourism.ca)

**Northern:** [travelmanitoba.com/manitoba-north](http://travelmanitoba.com/manitoba-north)



## PARK FEES

Park Vehicle Permits must be displayed year-round in provincial parks. **Purchase and print your vehicle permit on-line before you visit at [manitobaelicensing.ca](http://manitobaelicensing.ca).** Permits can also be purchased at campground or district offices or from participating retailers.

### Annual Permits

Vehicle - \$44.50

Bus - \$114.50

### 3-day Permits

Vehicle - \$16.50

Bus - \$39.50

### Daily Permits

Vehicle - \$9.50

Bus - \$29.50

### Free Park Entry Dates

Vehicle permits are not required during the following periods:

Family Fishing Weekend (June 7-9, 2024)

Canada's Parks Day Week (July 15-21, 2024)

Labour Day Weekend (August 30 - September 2, 2024)

February 1-28, 2025, free for the entire month.

### Camping Fees

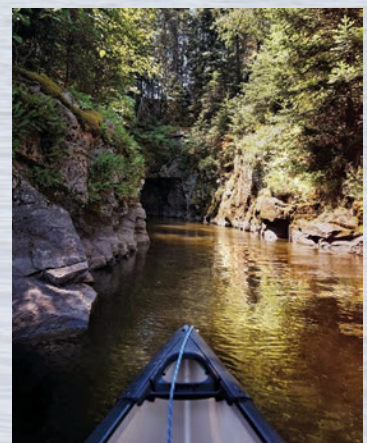
Rates vary depending on the availability of services such as modern washrooms, showers, hook-ups and firewood. Contact the Parks Reservation Service for rates and services.

### Parks Reservation Service

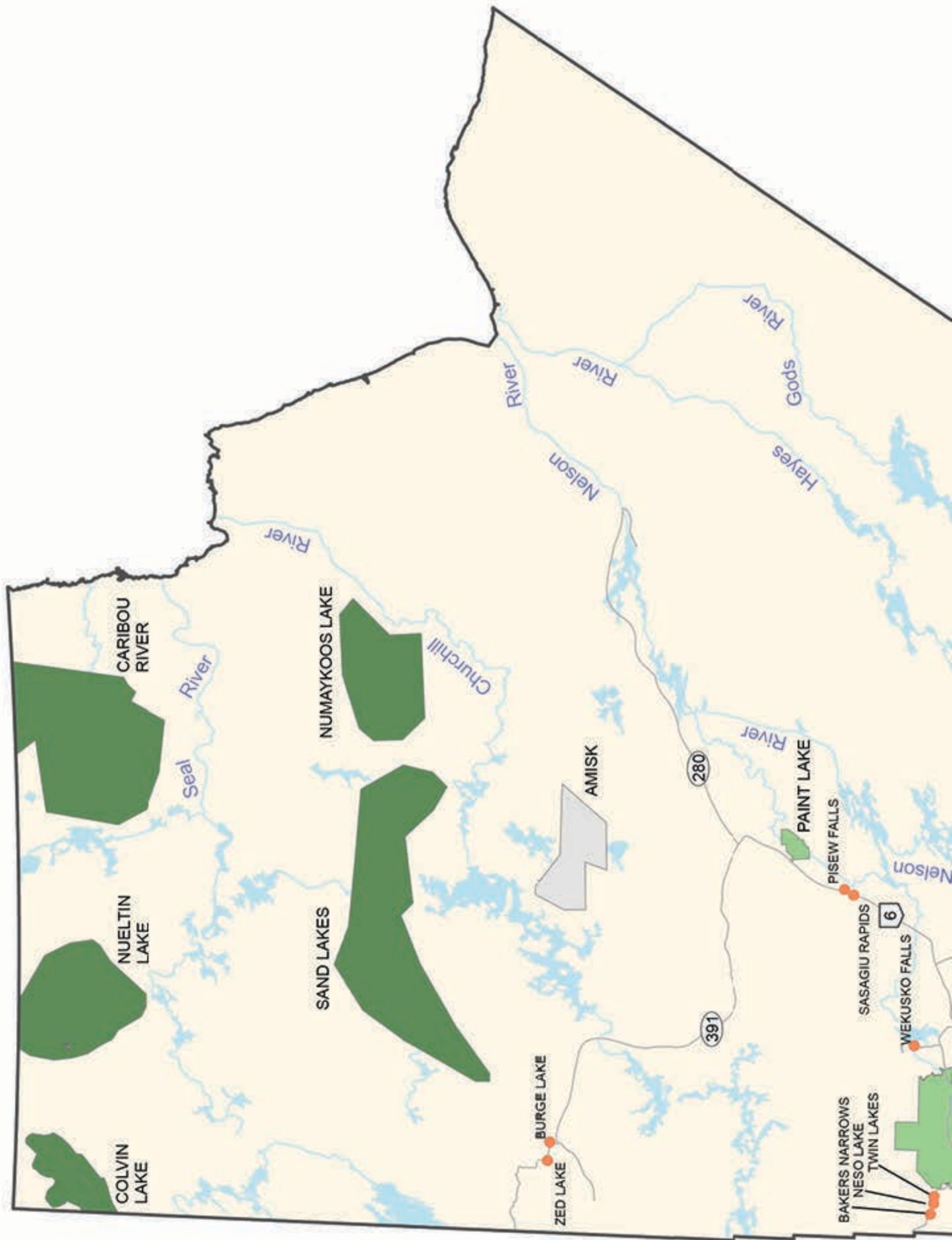
Reserve campsites, cabins, yurts & group-use areas

1-888-482-2267 (In Winnipeg 204-948-3333)

Online: [manitobaparks.com](http://manitobaparks.com)



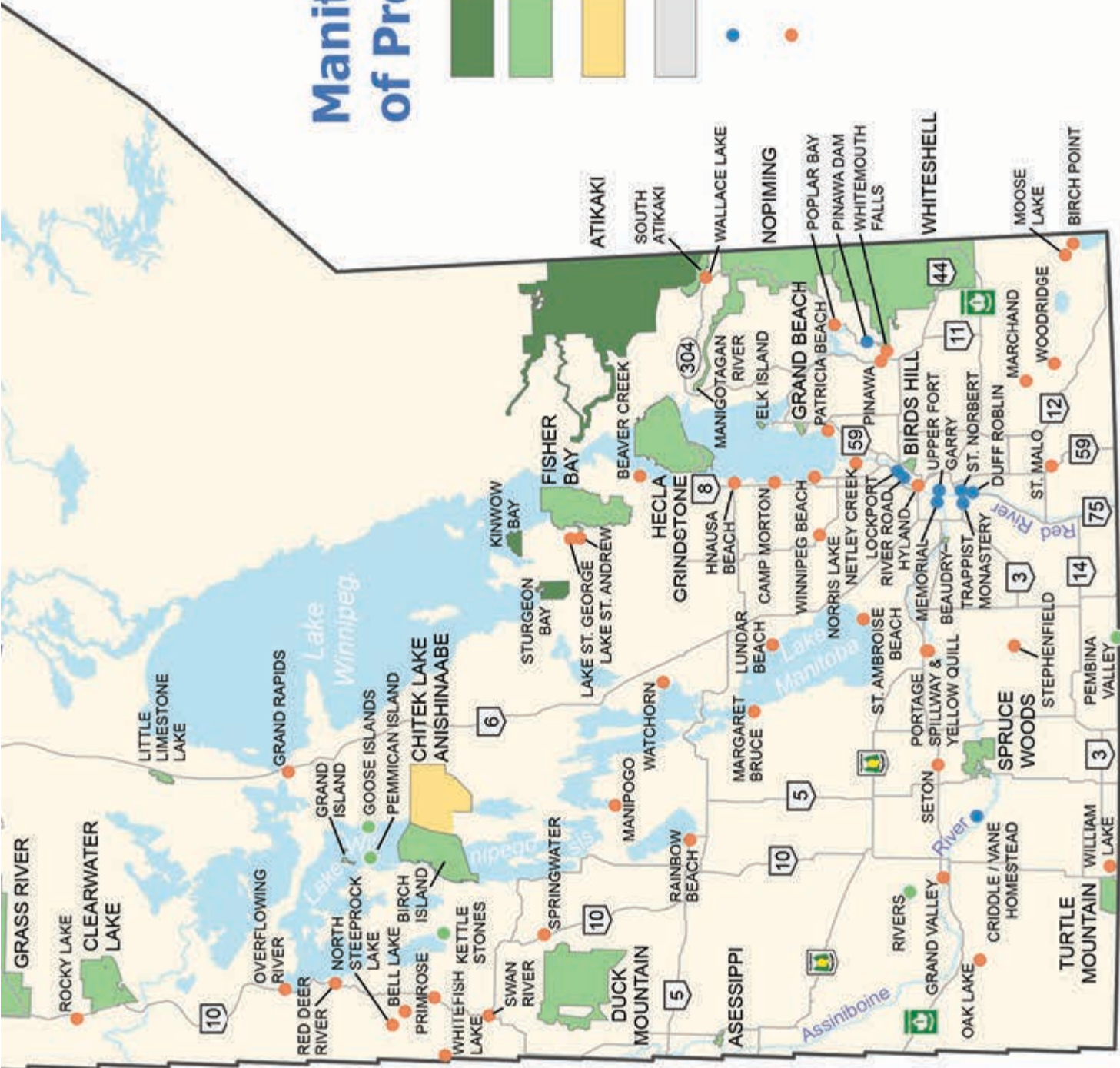
Publication available in alternate formats, upon request. / Aussi disponible en français.





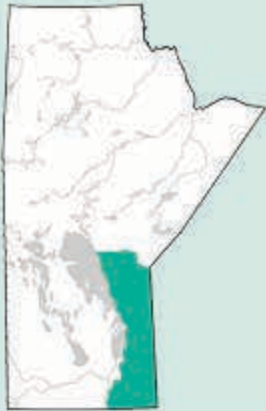
# Manitoba's System of Provincial Parks

- Wilderness Park
- Natural Park
- Indigenous Traditional Use Park
- Park Reserve
- Heritage Park
- Recreation Park





# EASTERN REGION Parks & Campgrounds



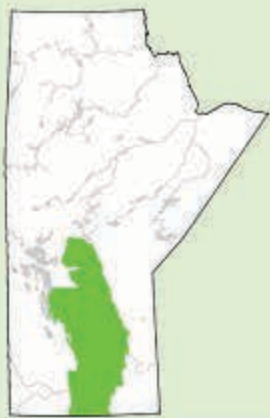
	Campground Services											Day Use Facilities/ Amenities/Activities										Trails									
	# of Campsites	Level of Service	Disabled Accessible Campsites	Washrooms M(modern) N(non-modern)	Showers / *Pay Showers	Trailer Sanitary Station	Group Camping Available	Fall Camping Available	Reservations Accepted	Seasonal Camping Available	Concession / Store	Laundromat	Interpretive Program	Beach	Boat / Canoe Rentals	Boat Launch	Golf Course (within 15 minute drive)	Historic Site	Interpretive Centre / Museum	Playground	Picnic Area / Shelters	Fishing	Water Routes	Hiking	Cycling	Equestrian	Cross Country/Skiing/Snowshoe	Fatbike	Snowmobile		
Atikaki Provincial Park				N																		•	•								
Birch Point Provincial Park	26	B		N			•	•							•						•	•									
Manigotagan River Provincial Park																						•	•								
Moose Lake Provincial Park	76	B, E		M	• <sup>5</sup>	•		•	•	•			•	•	•				•	•	•	•	•	•							
Nopiming Provincial Park																	•						•	•						•	
Beresford	18	B		N			•	•	•						•							•									
Bird Lake	28	B		N			•	•		•				•	•	•						•									
Black Lake	51	B	•	N		•	•	•	•					•	•							•		•							
Tulabi Falls	36	B, E	•	N		•	•	•						•	•							•		•							
Tulabi Falls Yurts	6	E	•	N			•	•						•	•							•		•							
Pinawa Dam Provincial Park				N												•	•				•	•	•								
St. Malo Provincial Park	386	B, E	•	M	• <sup>5</sup>	•	•	•	•	•	•	•	•	•	•	•	•			•	•	•	•	•	•	•	•	•	•	•	•
Whiteshell Provincial Park													•					•	•			•	•	•	•	•	•	•	•	•	
Betula Lake	14	E		M	• <sup>5</sup>	•	•	•	•	•			•	•	•					•	•	•	•	•	•						
Big Whiteshell	76	B, E, EW		M	• <sup>5</sup>	•	•	•	•	•			•	•	•					•	•	•	•	•	•						
Brereton	29	B, E		M		•		•	•	•	•			•	•					•	•	•	•	•							
Caddy Lake	26	B		M		•	•	•	•	•	•			•	•	•				•	•	•	•	•	•						
Falcon Beach	234	B, E, FS*	•	M	• <sup>5</sup>	•	•	•	•	•	•			•	•	•	•			•	•	•	•	•	•						
Falcon Lakeshore	153	B, E, EW*		M	• <sup>5</sup>	•	•	•	•	•	•			•	•	•	•			•	•	•	•	•	•						
Nutimik Lake	98	B, E, EW*		M	• <sup>5</sup>	•	•	•	•	•				•	•	•				•	•	•	•	•	•						
Nutimik Yurts	10	E	•	M	• <sup>5</sup>		•	•		•				•	•	•				•	•	•	•	•							
Opapiskaw	71	B, E	•	M	• <sup>5</sup>	•	•	•	•				•	•	•					•	•	•	•	•	•						
Otter Falls	74	B, E	•	M	• <sup>5</sup>	•	•	•		•				•	•	•				•	•	•	•	•	•						
West Hawk Lake	121	B, E, EW, FS*	•	M	• <sup>5</sup>	•	•	•	•	•	•			•	•	•	•			•	•	•	•	•	•						
White Lake	37	B	•	M	• <sup>5</sup>	•	•	•	•	•	•			•	•	•				•	•	•	•	•							
Whitemouth Falls Provincial Park				N																	•	•	•								

B = Basic , E = Electrical, EW= Electrical/Water, FS = Full Service, \* = 50 amp

Campsites have a picnic table and firepit. Firewood is available from local retailers at most campgrounds. Maximum stay is 21 nights. Yurts and Cabins have a maximum stay of seven nights. A select number of yurts and cabins are designated pet friendly. Please note: a maximum of two pets is allowed per designated yurt or cabin (dogs or cats only). **Rates and services are subject to change without notice.**



# CENTRAL REGION Parks & Campgrounds




	Campground Services											Day Use Facilities/ Amenities/Activities										Trails								
	# of Campsites	Level of Service	Disabled Accessible Campsites	Washrooms M-(modern) N-(non-modern)	Showers / *Pay Showers	Trailer Sanitary Station	Group Camping Available	Fall Camping Available	Reservations Accepted	Seasonal Camping Available	Concession / Store	Laundromat	Interpretive Program	Beach	Boat / Canoe Rentals	Boat Launch	Golf Course (within 15 minute drive)	Historic Site	Interpretive Centre / Museum	Playground	Picnic Area / Shelters	Fishing	Water Routes	Hiking	Cycling	Equestrian	Cross Country/Skiing/Snowshoe	Fatbike	Snowmobile	
Beaudry Provincial Park				N												•				•	•	•					•			
Beaver Creek Provincial Park	10	B		N			•						•		•						•	•								
Birds Hill Provincial Park	451	B, E, FS*	•	M	• <sup>S</sup>	•	•	•	•	•	•	•	•	•	•	•	•	•	•	•	•	•	•	•	•	•	•	•	•	
Camp Morton Provincial Park	19	B		N	• <sup>S</sup>	•	•	•	•					•				•		•	•	•			•	•	•			
Camp Morton Cabins	14	FS	•	M	• <sup>S</sup>			•	•					•						•	•	•			•	•				
Camp Morton Yurts	6	E	•	M	• <sup>S</sup>			•	•					•						•	•	•			•	•				
Grand Beach Provincial Park	355	B, E	•	M	• <sup>S</sup>	•			•	•	•	•	•	•	•	•	•	•	•	•	•	•	•	•	•	•	•	•	•	
Hecla Grindstone Provincial Park										•	•	•	•	•	•	•	•	•			•			•	•	•	•		•	
Gull Harbour Campground	177	B, E, EW*	•	M	•	•	•	•	•	•	•									•	•									
Hecla Cabins	20	E	•	M	•			•	•	•	•			•	•	•	•	•			•	•	•							
Hnausa Beach Provincial Park	41	B, E		M	• <sup>S</sup>	•		•	•	•			•	•	•	•				•	•	•								
Lake St. George Provincial Park	28	B		N											•						•									
Lockport Provincial Park				N														•			•	•		•						
Lundar Beach Provincial Park	33	B, E		M	• <sup>S</sup>	•			•	•			•	•	•	•				•	•	•			•					
Norris Lake Provincial Park	15	B		N			•	•	•					•	•	•				•	•	•								
Memorial Park Provincial Park																		•			•									
Patricia Beach Provincial Park				N						•			•								•									
Pembina Valley Provincial Park				N																	•			•						
Portage Spillway Provincial Park				N																	•	•								
River Road Provincial Park				N														•			•	•								
St. Ambrose Provincial Park				N									•																	
St. Norbert Provincial Park				N								•					•	•	•		•	•	•	•						
Stephenfield Provincial Park	134	B, E, EW*	•	M	• <sup>S</sup>	•	•	•	•	•			•	•	•	•				•	•	•			•					
Stephenfield Yurts	6	E	•	M	• <sup>S</sup>			•	•				•	•	•	•				•	•	•			•					
Trappist Monastery Provincial Park				N													•	•			•			•						
Upper Fort Garry Provincial Park																		•			•									
Watchorn Provincial Park	46	B, E		M	• <sup>S</sup>	•	•		•	•			•	•	•	•				•	•	•								
Winnipeg Beach Provincial Park	120	FS	•	M	• <sup>S</sup>	•		•	•	•	•	•	•	•	•	•				•	•	•								

B = Basic , E = Electrical, EW= Electrical/Water, FS = Full Service, \* = 50 amp

Campsites have a picnic table and firepit. Firewood is available from local retailers at most campgrounds. Maximum stay is 21 nights. Yurts and Cabins have a maximum stay of seven nights. A select number of yurts and cabins are designated pet friendly. Please note: a maximum of two pets is allowed per designated yurt or cabin (dogs or cats only). **Rates and services are subject to change without notice.**



# WESTERN REGION Parks & Campgrounds




	Campground Services											Day Use Facilities/ Amenities/Activities										Trails							
	# of Campsites	Level of Service	Disabled Accessible Campsites	Washrooms M-(modern) N-(non-modern)	Showers / *Pay Showers	Trailer Sanitary Station	Group Camping Available	Fall Camping Available	Reservations Accepted	Seasonal Camping Available	Concession / Store	Laundromat	Interpretive Program	Beach	Boat / Canoe Rentals	Boat Launch	Golf Course (within 15 minute drive)	Historic Site	Interpretive Centre / Museum	Playground	Picnic Area / Shelters	Fishing	Water Routes	Hiking	Cycling	Equestrian	Cross Country Skiing/Snowshoe	Fatbike	Snowmobile
Asessippi Provincial Park	102	B, E	•	M	•	•	•	•	•	•	•		•	•	•		•		•	•	•		•	•					
Asessippi Yurts	6	E	•	M	•		•	•		•	•		•	•	•				•	•	•		•	•					
Bell Lake Provincial Park	8	B		N				•					•		•					•	•								
Duck Mountain Provincial Park																	•					•	•	•	•	•	•	•	•
Blue Lakes	73	B,E	•	M	• <sup>S</sup>	•	•	•	•	•	•		•	•	•				•	•	•		•	•					
Childs Lake	92	B, E, EW*	•	M	• <sup>S</sup>	•	•	•	•	•	•		•	•	•				•	•	•		•						
Childs Lake Yurts	10	E	•	M	• <sup>S</sup>		•	•		•	•		•	•	•				•	•	•		•						
Singush	10	B		N			•						•		•					•									
Wellman Lake	86	B, E, EW*	•	M	• <sup>S</sup>	•	•	•	•	•	•		•	•	•				•	•	•		•						
Criddle/Vane Homestead Provincial Park				N													•			•			•						
Grand Valley Provincial Park				N												•	•		•				•						
Spruce Woods Provincial Park												•					•	•			•	•	•	•	•	•	•	•	•
Kiche Manitou	197	B, E	•	M	• <sup>S</sup>	•	•	•	•	•	•		•	•	•				•	•	•								
Kiche Manitou Yurts	14	E	•	M	• <sup>S</sup>	•	•	•		•			•	•	•				•	•	•								
Manipogo Provincial Park	92	B, E	•	M	• <sup>S</sup>	•	•	•	•	•	•		•		•				•	•	•								
North Steeprock Lake Provincial Park	17	B		N	•	•	•		•				•		•				•	•	•								
Oak Lake Provincial Park				N									•						•	•									
Primrose Provincial Park	6	B		N			•													•									
Rainbow Beach Provincial Park	73	B, E, EW	•	M	• <sup>S</sup>	•	•	•	•	•	•		•	•	•				•	•	•		•						
Rivers Provincial Park	49	B, E, EW, FS*	•	M	•	•	•	•	•	•	•		•	•	•				•	•	•		•						
Turtle Mountain Provincial Park												•										•	•	•	•	•	•	•	•
Adam Lake	102	B, E, EW*	•	M	• <sup>S</sup>	•	•	•	•	•	•		•	•	•				•	•	•								
Max Lake	24	B		M	•	•	•	•	•				•	•					•	•	•								
Whitefish Lake Provincial Park	39	B		N		•	•		•				•	•					•	•	•								
William Lake Provincial Park	43	B	•	M	• <sup>S</sup>	•	•	•	•				•	•	•				•	•	•		•						

B = Basic, E = Electrical, EW= Electrical/Water, FS = Full Service, \* = 50 amp

Campsites have a picnic table and firepit. Firewood is available from local retailers at most campgrounds. Maximum stay is 21 nights. Yurts and Cabins have a maximum stay of seven nights. A select number of yurts and cabins are designated pet friendly. Please note: a maximum of two pets is allowed per designated yurt or cabin (dogs or cats only). **Rates and services are subject to change without notice.**





	Campground Services										Day Use Facilities/ Amenities/Activities										Trails								
	# of Campsites	Level of Service	Disabled Accessible Campsites	Washrooms M-(modern) N-(non-modern)	Showers / Pay Showers	Trailer Sanitary Station	Group Camping Available	Fall Camping Available	Reservations Accepted	Seasonal Camping Available	Concession / Store	Laundromat	Interpretive Program	Beach	Boat / Canoe Rentals	Boat Launch	Golf Course (within 15 minute drive)	Historic Site	Interpretive Centre / Museum	Playground	Picnic Area / Shelters	Fishing	Water Routes	Hiking	Cycling	Equestrian	Cross Country/Skiing/ Snowshoe	Fatbike	Snowmobile
Bakers Narrows Provincial Park	71	B, E	M	• <sup>S</sup>	•			•	•	•			•		•				•	•	•		•						
Bakers Narrows Yurts	6	E	•	M	• <sup>S</sup>			•	•				•		•				•	•	•		•						
Burge Lake Provincial Park	13	B		N		•							•		•				•	•	•								
Clearwater Provincial Park																							•	•		•	•	•	
Campers Cove	41	B, E	M	• <sup>S</sup>	•			•	•				•		•				•	•	•		•						
Campers Cove Yurts	9	E	•	M	• <sup>S</sup>			•					•		•				•	•	•		•						
Pioneer Bay	20	E	M	• <sup>S</sup>	•			•	•	•			•						•	•	•								
Grass River Provincial Park																						•							
Gyles	32	B	•	N	•	•			•				•		•				•		•								
Iskwasum	41	B	•	N	•	•	•		•						•				•		•		•						
Reed Lake	45	B	•	N	•	•			•						•				•	•	•								
Paint Lake Provincial Park												•														•		•	
Lakeview	9	B		N			•	•	•						•						•		•						
Paint Lake	77	B, E	•	M	• <sup>S</sup>	•	•	•	•	•			•		•				•	•	•	•	•	•					
Paint Lake Yurts	6	E	•	N	• <sup>S</sup>		•	•		•			•		•				•	•	•		•						
Pisew Falls Provincial Park				N																•	•	•	•						
Wekusko Falls Provincial Park	67	B, E	M	• <sup>S</sup>	•			•	•	•	•		•	•	•	•			•	•	•	•	•						
Zed Lake Provincial Park	10	B		N									•		•				•	•	•								

B = Basic , E = Electrical, EW= Electrical/Water, FS = Full Service, \* = 50 amp

Campsites have a picnic table and firepit. Firewood is available from local retailers at most campgrounds. Maximum stay is 21 nights. Yurts and Cabins have a maximum stay of seven nights. A select number of yurts and cabins are designated pet friendly. Please note: a maximum of two pets is allowed per designated yurt or cabin (dogs or cats only). **Rates and services are subject to change without notice.**



Provincial park beaches are now tobacco free zones. Manitoba Parks encourages you and your groups to keep the following tips in mind to ensure being around the water is not only fun, but safe as well.

- Watch children at all times and stay within arm's reach. Never leave them alone in or near water.
- Ensure children are properly supervised by an adult, especially when adults may be distracted by activities such as meal preparation, equipment set-up or packing. Adult supervision is the best protection for children.
- Swim only in designated swim areas.
- Be aware of your swimming limitations. Don't try to go beyond your ability.
- Ensure that you and your group know how to swim. It is the best way to stay safe in and around the water.
- Don't bring inflatables to the beach. Wind can blow them into the water where children tend to follow.
- Always check water depth before diving. Water levels may change from day to day due to changing weather conditions.
- Never swim alone. Always swim with a friend and watch out for each other.
- Weaker swimmers and young children should wear a properly sized life jacket or personal floatation device (PFD).
- Don't consume alcohol before or while swimming. Alcohol impairs your abilities and judgment.
- Take swimming and water safety lessons. Learn First Aid and CPR skills so you can help yourself and others.

### **Drowning is Preventable!**

Manitoba's provincial parks are ideal for boating, but boating fun can quickly turn to tragedy. To stay safe while enjoying our waterways, please follow these important safety guidelines:

- As of September 15, 2009, all operators of recreational, motorized, pleasure-craft in Canada require a Pleasure Craft Operator Card (PCO Card) or proof of competency. Get your PCO Card and get trained. Learn more about boating safety, equipment requirements, regulations, and how to respond in emergency situations. For more information call toll free: 1-800-267-6687
- Tell someone of your travel plans, where you are going and when you are expected to return.
- Always wear a lifejacket or personal floatation device (PFD). It could save your life. Less than 10 percent of Manitoba drowning victims wore a lifejacket or PFD.
- Drive responsibly and at a moderate speed. Laws prohibit the operation of a vessel in a careless or inconsiderate manner.
- Don't drink and drive. Alcohol impairs vision and judgment and is involved in 31 percent of water related deaths in Manitoba.
- Kayakers should ensure they can be seen in water by wearing bright colored lifejackets or PFDs.
- Check the weather forecast before going out. Once on the water, watch for changes in the weather and head to shore if it looks like a storm is approaching.
- Personal watercraft operators should not carry passengers under the age of six.
- Cooking and heating in enclosed spaces can cause carbon monoxide to accumulate and lead to poisoning. Boaters should only use fuel-burning appliances in well-ventilated places. Swimmers should not swim where boat engine exhaust may accumulate.

For more information about boating safety, please contact:

Office of Boating Safety, Transport Canada  
**Toll free 1-800-267-6687**



Protect Manitoba's trees.  
**Don't move firewood.**

EMERALD ASH  
BORERS ARE  
A THREAT!



Invasive species threaten Manitoba's trees. The emerald ash borer and other insects live in firewood. When firewood is moved between locations, so are the insects.

**One log can kill a million trees.**

Learn more at: [Manitoba.ca/stopthespread](http://Manitoba.ca/stopthespread)

**Manitoba** 

PROTECT MANITOBA'S WATERS AND RESOURCES

**STOP** AQUATIC  
INVASIVE  
SPECIES



**Going to the beach?  
Stop the spread of aquatic  
invasive species.**

Always clean, drain dry and if necessary, decontaminate watercraft and water-related equipment.

Learn how at:  
[manitoba.ca/StopAIS](http://manitoba.ca/StopAIS)

**Manitoba** 



# SAFETY IN BLACK BEAR COUNTRY

Never feed or approach a bear, or any wild animal.

- Be alert
- Make noise
- Travel in groups
- Keep dogs on leash
- Keep bear deterrent spray handy & know how to use it
- Store food, garbage, toothpaste and clothes used while cooking where bears can't access them.
- Never leave food unattended
- Leave only footprints behind (not garbage)



## WHEN ENCOUNTERING A BEAR

- Stop and assess the situation and the bear's response.
- During a surprise encounter, slowly back away and prepare to deploy bear deterrent spray.
- If the bear charges, stand your ground and use your bear deterrent spray.
- If the bear attacks during a surprise encounter, play dead.
- If the bear persistently stalks you and then attacks, fight back.
- If the bear attacks you in your tent, fight back.

**Bears should neither be feared nor dismissed as harmless, but should be respected for the potential danger they pose.**

For more information, visit  
[www.manitoba.ca/blackbear](http://www.manitoba.ca/blackbear)





# LEARN AND DISCOVER WITH PARK INTERPRETERS

## Guided Experiences & Educational Activities

Are you looking for something to make your next Manitoba park visit more memorable? Follow us over the hills, through the woods and across sandy beaches to family fun. Attend an evening event and travel through time to meet those who came before us, without leaving the comfort of a campfire. Take the path less travelled as interpreters guide you through a new trail or help you rediscover an old one. Interpreters love questions, so ask yours anytime, anywhere!

### Interpretive Events

Park interpreters provide guided hikes, special events, family activities, campfire talks and amphitheatre presentations in select parks in all four seasons of the year. Interpretive programs are free and open to everyone! For program listings visit [manitobaparks.com](http://manitobaparks.com) or look for event posters in your favourite park.

### School Programs in Provincial Parks – The Ultimate Outdoor Classroom!

Teachers, are you looking for a way to bring your lessons to life? Take your students to a provincial park for an opportunity to follow in the steps of history or experience science in action. Interpreters deliver programming on cultural history, ecology and flora and fauna study, as well as outdoor skills. Programs are often multi-disciplinary and tied directly into Manitoba

Education curriculum learning outcomes. School programs are free to all grades!

### Make a family discovery at an Interpretive Centre/ Museum

Park interpreters will greet you and answer any questions you have about our unique natural, cultural, historical and park management resources. Spend a few minutes or an entire afternoon at one of our park centres, exploring hands-on exhibits and interpretive activities.

- Alfred Hole Goose Sanctuary (Whiteshell)
- Hecla School
- St. Norbert
- Spruce Woods Visitor Centre
- Whiteshell Fish Hatchery

For more information visit [manitobaparks.com](http://manitobaparks.com) or email our Interpretation Unit: [ParkInterpretation@gov.mb.ca](mailto:ParkInterpretation@gov.mb.ca)



**When your  
heart needs  
to *race***



**When your  
heart needs  
*quiet***



**When your  
heart needs  
*wild***



**CANADA'S  
HEART IS  
CALLING**

**MANITOBA**

[travelmanitoba.com](http://travelmanitoba.com)