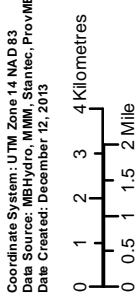


Coordinate System: UTM Zone 14 NAD 83
 Data Source: MBHydro, MIM, Stantec, ProvMB, NRCan
 Date Created: December 12, 2013



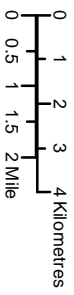
- Final Preferred Route
- Community
- Generating Station
- Transmission Line
- Provincial Road/Highway
- City / Town
- Provincial Park
- Provincial Forest
- Rural Municipality
- Project Study Area
- Transmission Station
- Whiteshell Station

Pointe du Bois Transmission Project

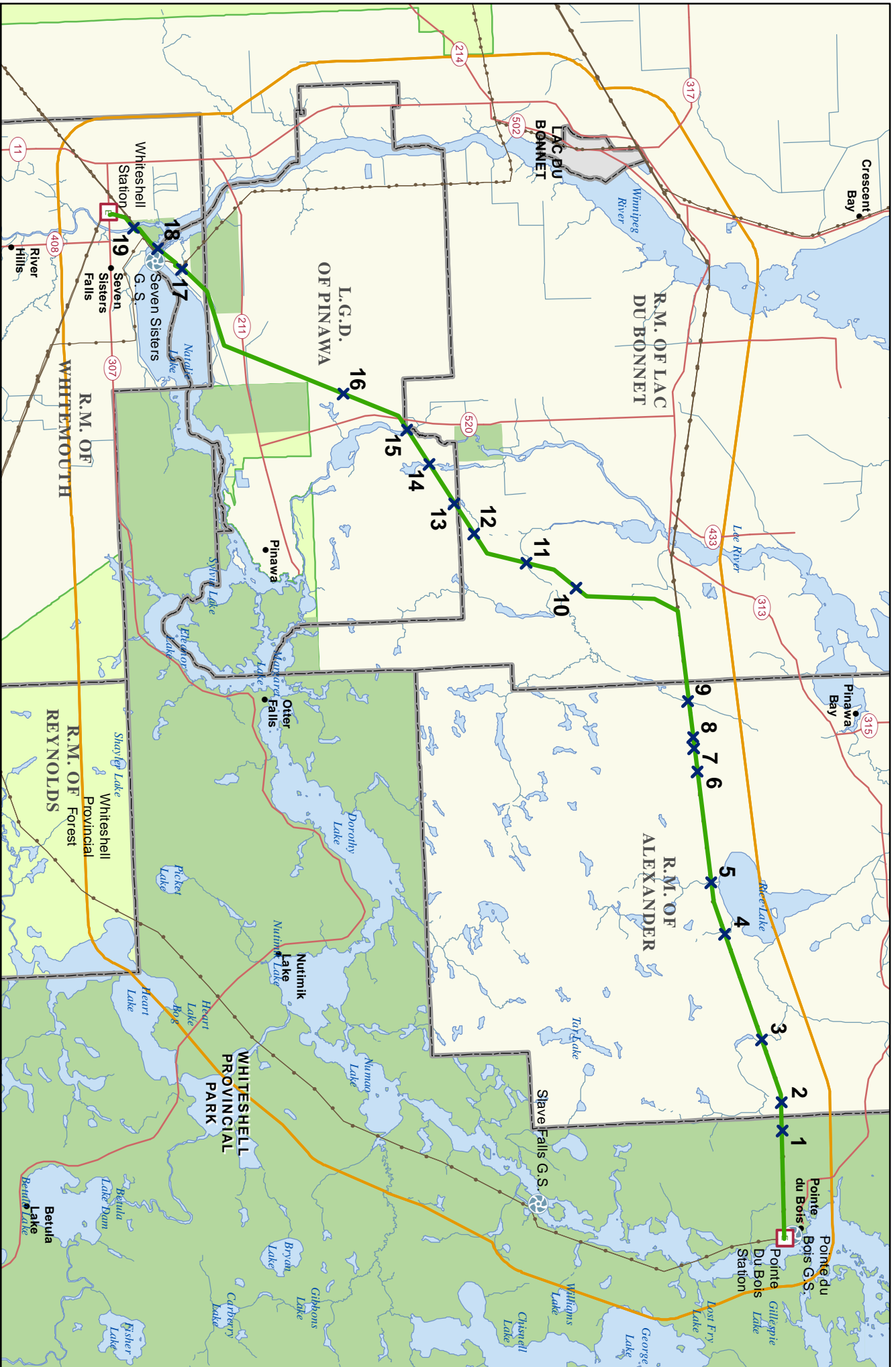
Final Preferred Route



Coordinate System: UTM Zone 14 NAD 83
 Data Source: MBHydro, MM, PovM, NRCan
 Date Created: December 19, 2013

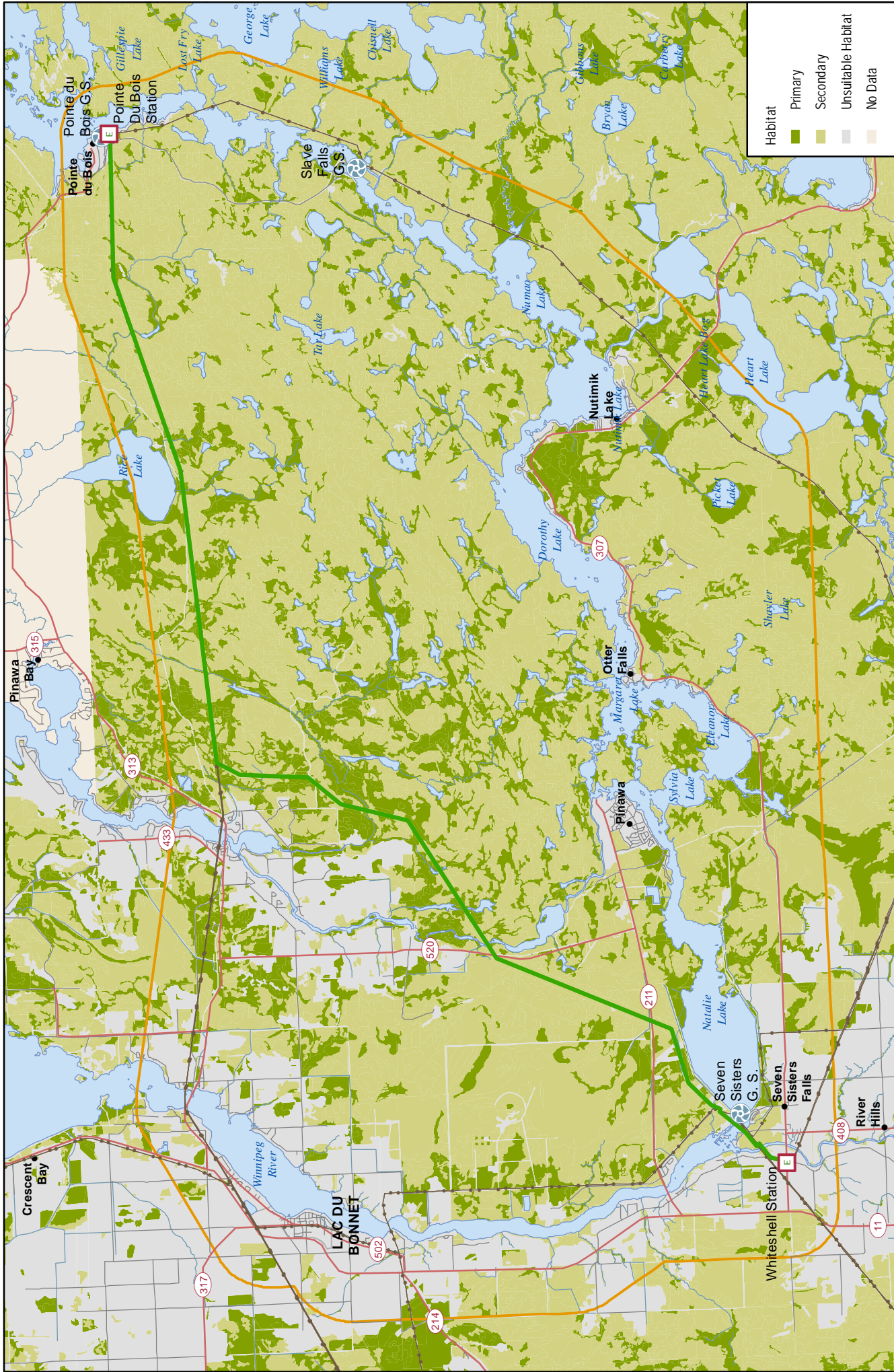


- Water Crossing
- Final Preferred Route
- Generating Station
- Transmission Station
- Community
- Transmission Line
- Provincial Park
- Provincial Road/Highway
- Provincial Forest
- City / Town
- Rural Municipality
- Project Study Area



Pointe du Bois Transmission Project

Final Preferred Route Water Crossings



Habitat

- Primary
- Secondary
- Unsuitable Habitat
- No Data

Coordinate System: UTM Zone 14 NAD 83
 Data Source: MBHydro, MIMI, ECO STEM Ltd., ProvMB, NRCan, WRCS
 Date Created: January 14, 2014

0 1 2 3 4 Kilometres
 0 0.5 1 1.5 2 Mile

Pointe du Bois Transmission Project
Moose Habitat Quality

Map 7-3

Final Preferred Route

Project Study Area

Generating Station

Transmission Station

Community

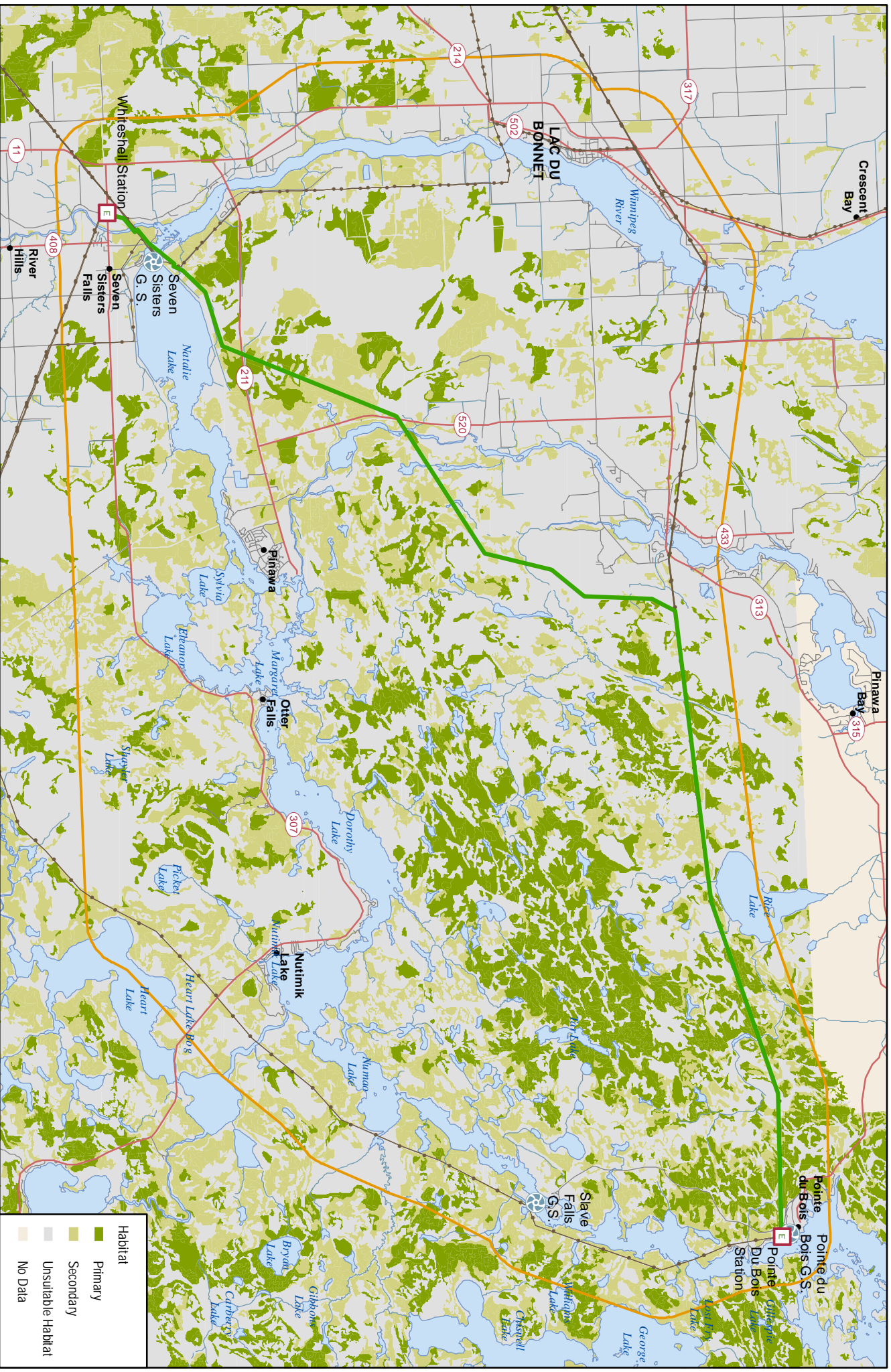
Transmission Line

Provincial Road/Highway

City / Town

North Arrow





Habitat	
	Primary
	Secondary
	Unsuitable Habitat
	No Data

Coordinate System: UTM Zone 14 NAD 83
 Data Source: MBHydro, MWM, ECO STEW Ltd,
 PROVIB, NRCan, WRCS
 Date Created: January 14, 2014



- Final Preferred Route
- Project Study Area
- Transmission Station
- City / Town
- Provincial Road/Highway
- Community
- Transmission Line
- Generating Station

Pointe du Bois Transmission Project
American Marten Habitat Quality