



P.O. Box 7950 Stn Main • Winnipeg Manitoba Canada • R3C 0J1  
Telephone/ N° de téléphone: (204) 360-4394 • Fax/ N° de télécopieur: (204) 360-3734  
SJohnson@hydro.mb.ca

October 4, 2013

Director  
Environmental Approvals Branch  
Manitoba Conservation  
Suite 160, 123 Main Street  
Winnipeg, MB R3C 1A5

Dear Ms. Braun:

**Re: Lake Winnipeg East System Improvement Project Adjustment to the Final Preferred Route (Client file 5624.00)**

Manitoba Hydro submitted an application (Client file 5624.00) for the Lake Winnipeg East System Improvement Project on January 2, 2013. We are requesting an amendment to our initial application to accommodate an adjustment to the Final Preferred Route of the proposed transmission line.

Manitoba Infrastructure and Transportation (MIT) had concerns with the final route as it passed by two active quarries and requested that Manitoba Hydro avoid the active quarries.

The attached maps illustrate the adjustments from the original Final Preferred Route, addressing the above concerns. MIT has reviewed the revised routing and have no further concerns. We have also attached an updated GIS file package of the revised Final Preferred Route.

In closing, should you require more information or have any questions, please contact me at 360-4394.

Yours truly,

Shannon Johnson, Manager  
Licensing & Environmental Assessment Department,  
Transmission Planning & Design  
Transmission

**Legend**

- Proposed Infrastructure**
- Final Preferred Route
- Existing Infrastructure**
- Community
  - Transmission Line
  - Provincial Trunk Highway
  - Provincial Road
- Landbase**
- First Nation
  - Provincial Park
  - Quarry (NW-36-21-9-E)
  - Quarry (SE-15-24-9-E)



Coordinate System: UTM Zone 14N NAD83  
 Data Source: MB Hydro, ProvMB  
 Date Created: October 04, 2013





**Lake Winnipeg East System Improvement Transmission Project**

*Draft: For Discussion Purposes Only*




**Legend**

**Proposed Infrastructure**

-  Final Preferred Route Adjustment (60m ROW)
-  Final Preferred Route (60m ROW)

**Landbase**

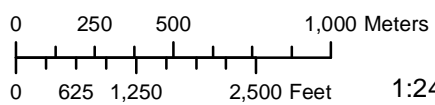
-  Quarry NW-36-21-9-E



**NW-36-21-9-E**



Coordinate System: UTM Zone 14N NAD83  
Data Source: MB Hydro, ProvMB  
Date Created: October 04, 2013



1:24,000



**Lake Winnipeg East System Improvement  
Transmission Project**

*Draft: For Discussion Purposes Only*



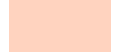
**Legend**

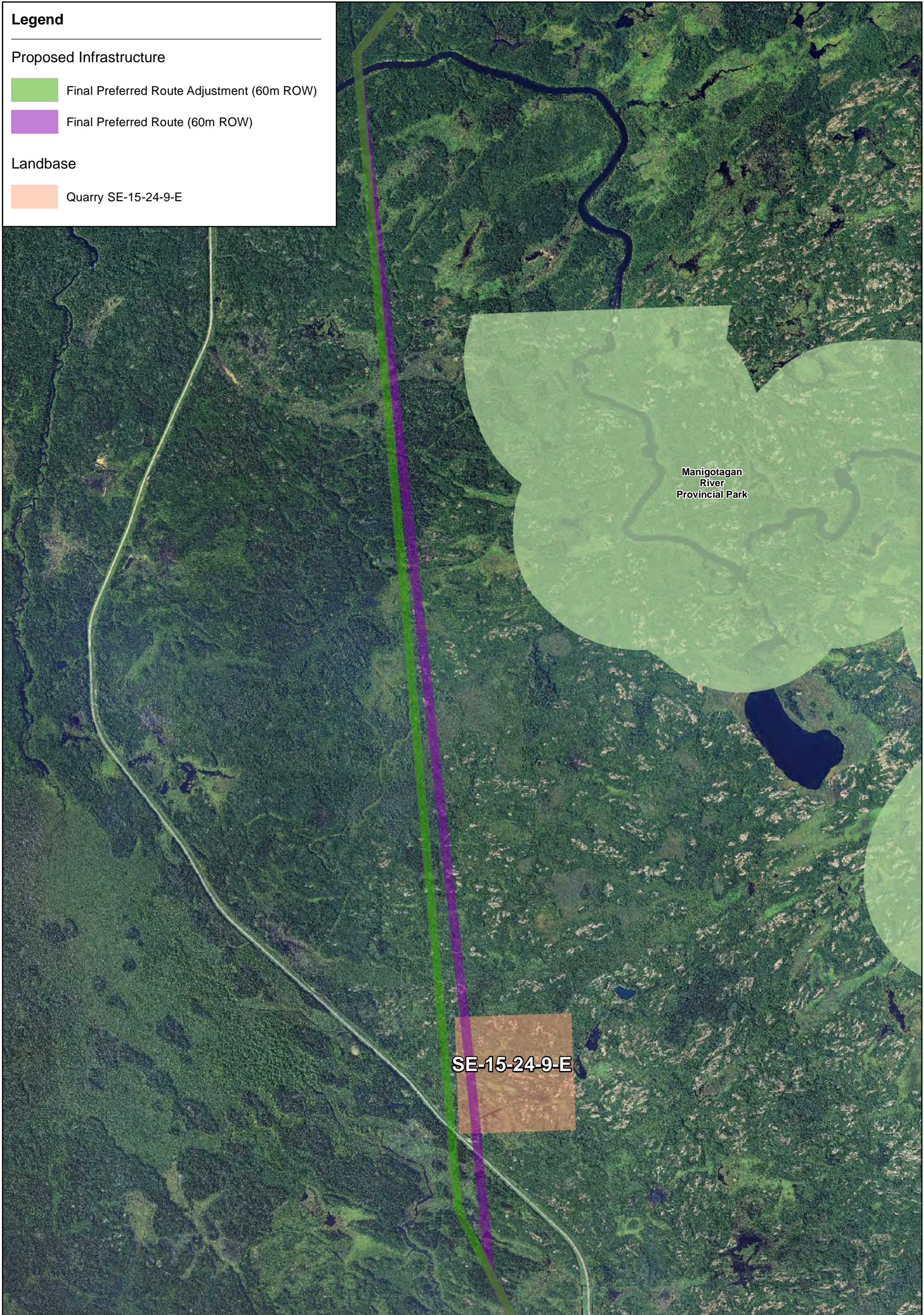
**Proposed Infrastructure**

 Final Preferred Route Adjustment (60m ROW)

 Final Preferred Route (60m ROW)

**Landbase**

 Quarry SE-15-24-9-E



**SE-15-24-9-E**

Manigotagan  
River  
Provincial Park



Coordinate System: UTM Zone 14N NAD83  
Data Source: MB Hydro, ProvMB  
Date Created: October 04, 2013



0 250 500 1,000 Meters

0 750 1,500 3,000 Feet 1:24,000

**Lake Winnipeg East System Improvement  
Transmission Project**

*Draft: For Discussion Purposes Only*