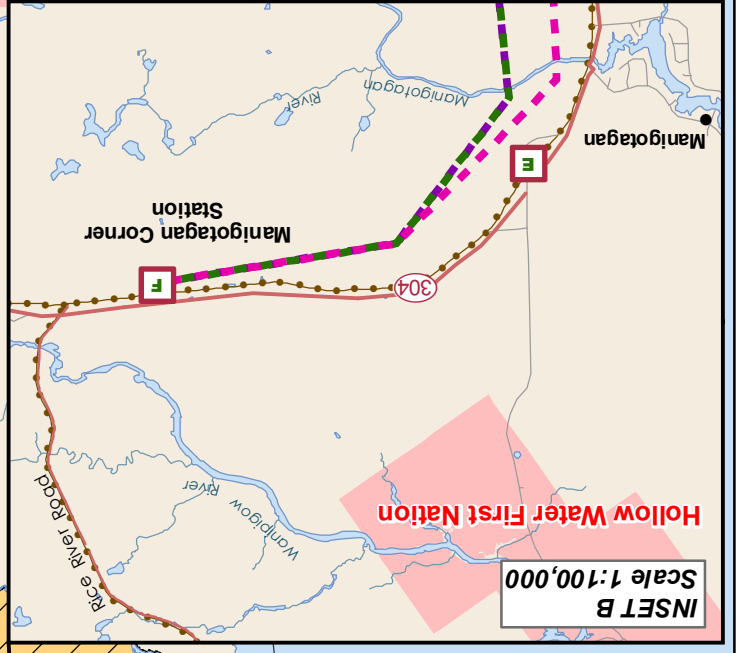
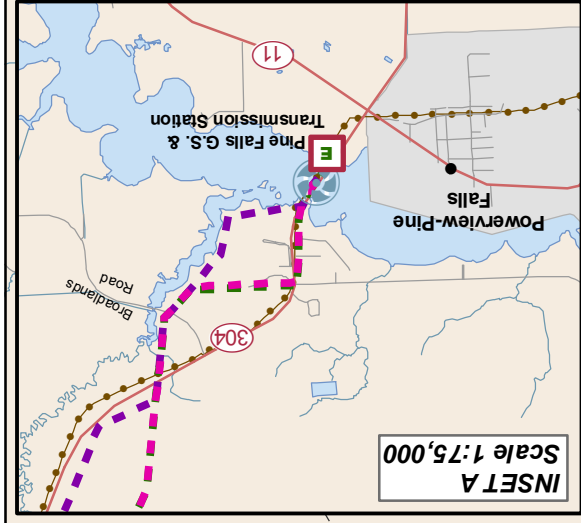
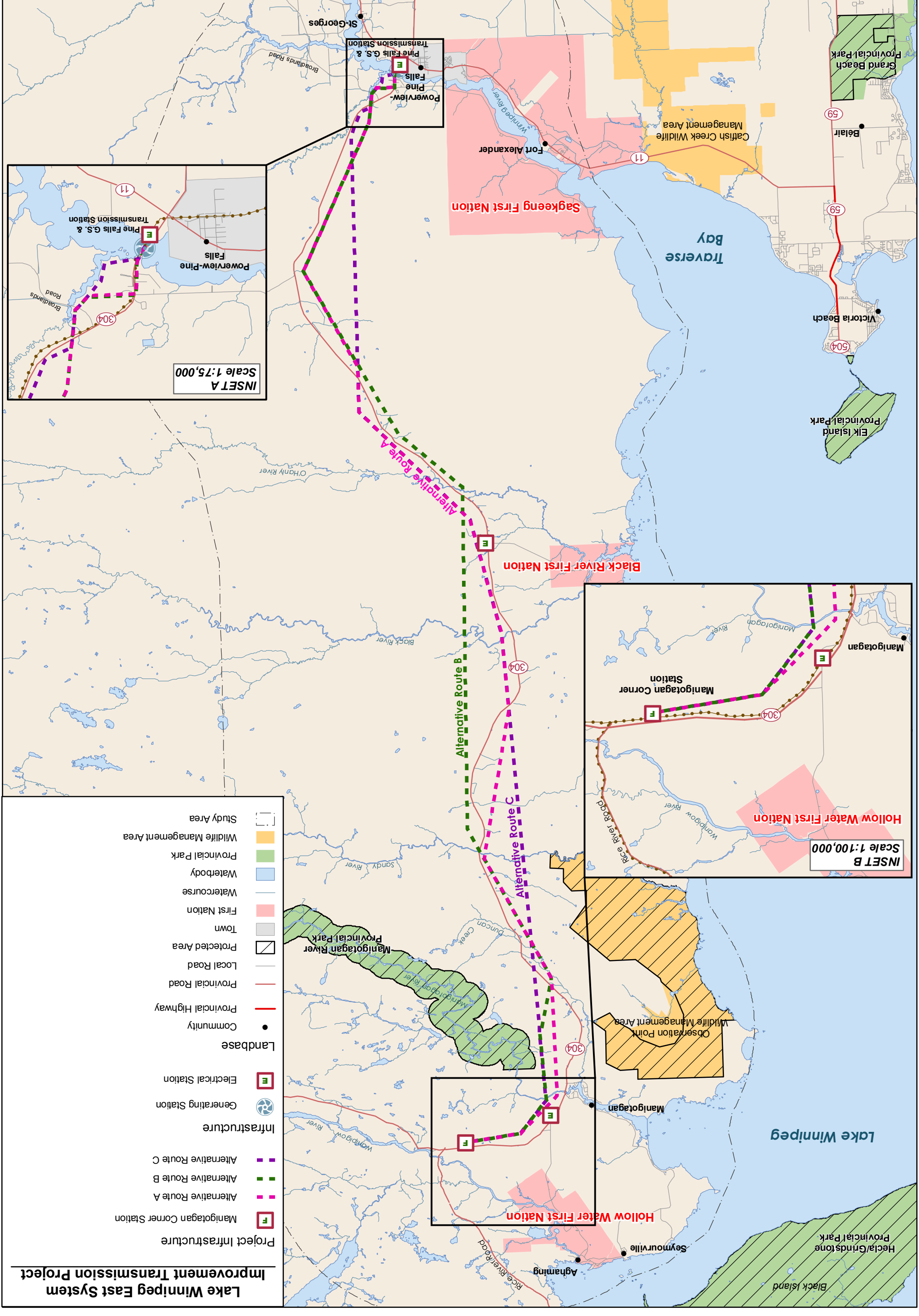
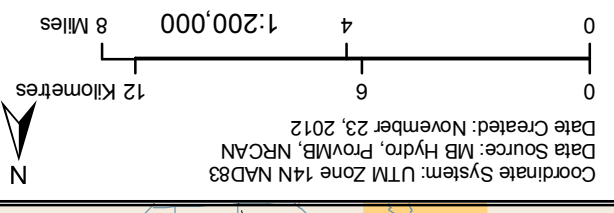


Project Study Area

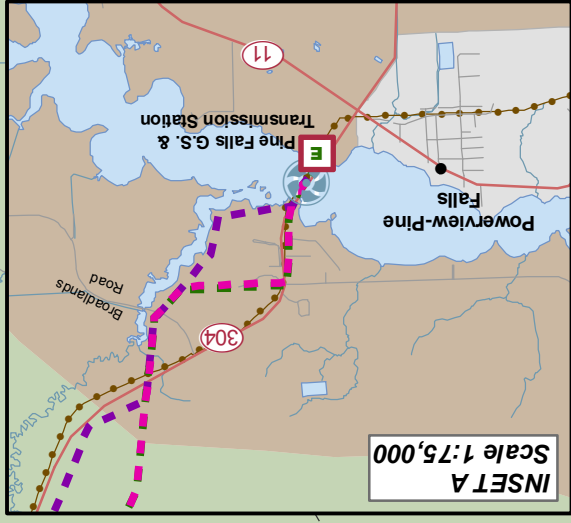
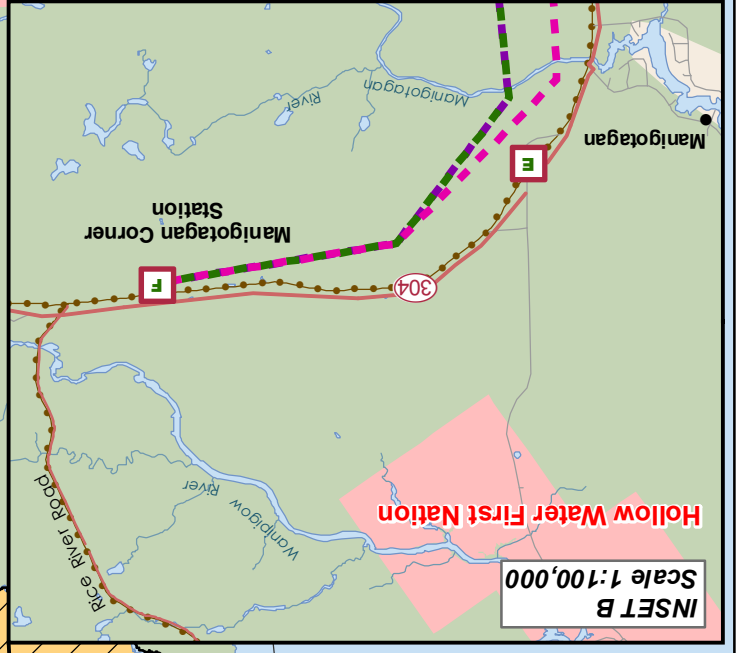
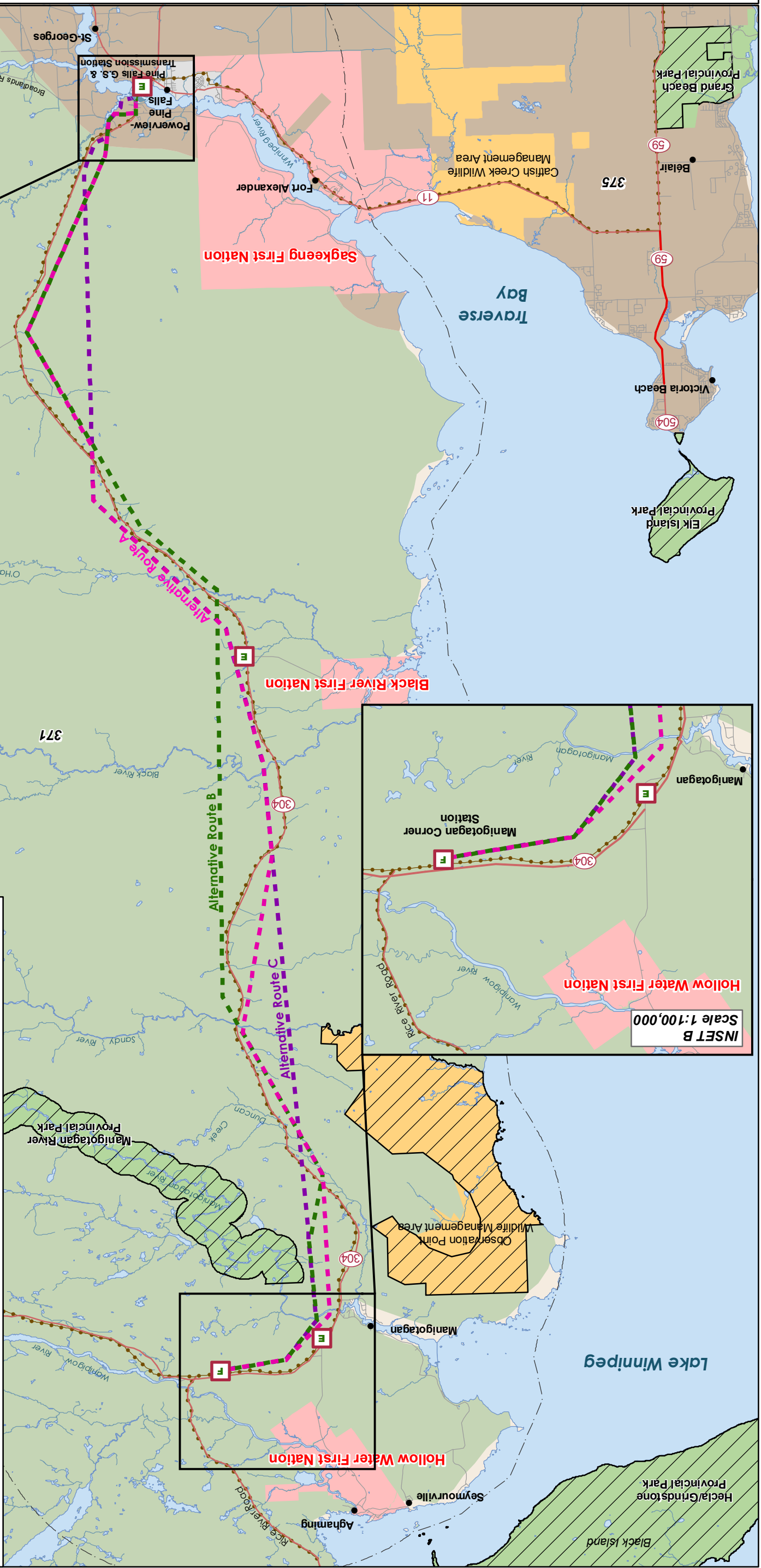
Maskwa Ecological Consulting Inc.



- Lake Winnipeg East System Improvement Transmission Project**
- Project Infrastructure
 - Manigotagan Corner Station
 - Alternative Route A
 - Alternative Route B
 - Alternative Route C
 - Generating Station
 - Electrical Station
 - Landbase
 - Community
 - Provincial Highway
 - Provincial Road
 - Local Road
 - Protected Area
 - Town
 - First Nation
 - Watercourse
 - Waterbody
 - Provincial Park
 - Wildlife Management Area
 - Study Area

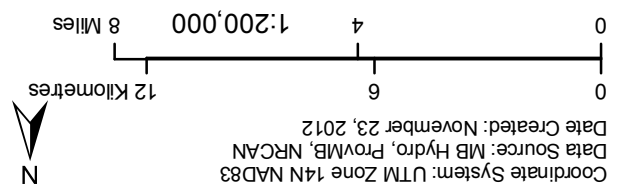
Lake Winnipeg East System Improvement Transmission Project

- Project Infrastructure**
- Manigotagan Corner Station
 - Alternative Route A
 - Alternative Route B
 - Alternative Route C
 - Generating Station
 - Electrical Station
 - 66 kV Sub Transmission Line
- Natural Ecological Region**
- Lac Seul Upland - 371 - Wrong Lake Ecodistrict
 - Lake of the Woods - 375 - Stead Ecodistrict
- Landbase**
- Community
 - Provincial Highway
 - Provincial Road
 - Local Road
 - Protected Area
 - Town
 - First Nation
 - Watercourse
 - Waterbody
 - Provincial Park
 - Wildlife Management Area
 - Study Area



Maskwa Ecological Consulting Inc.

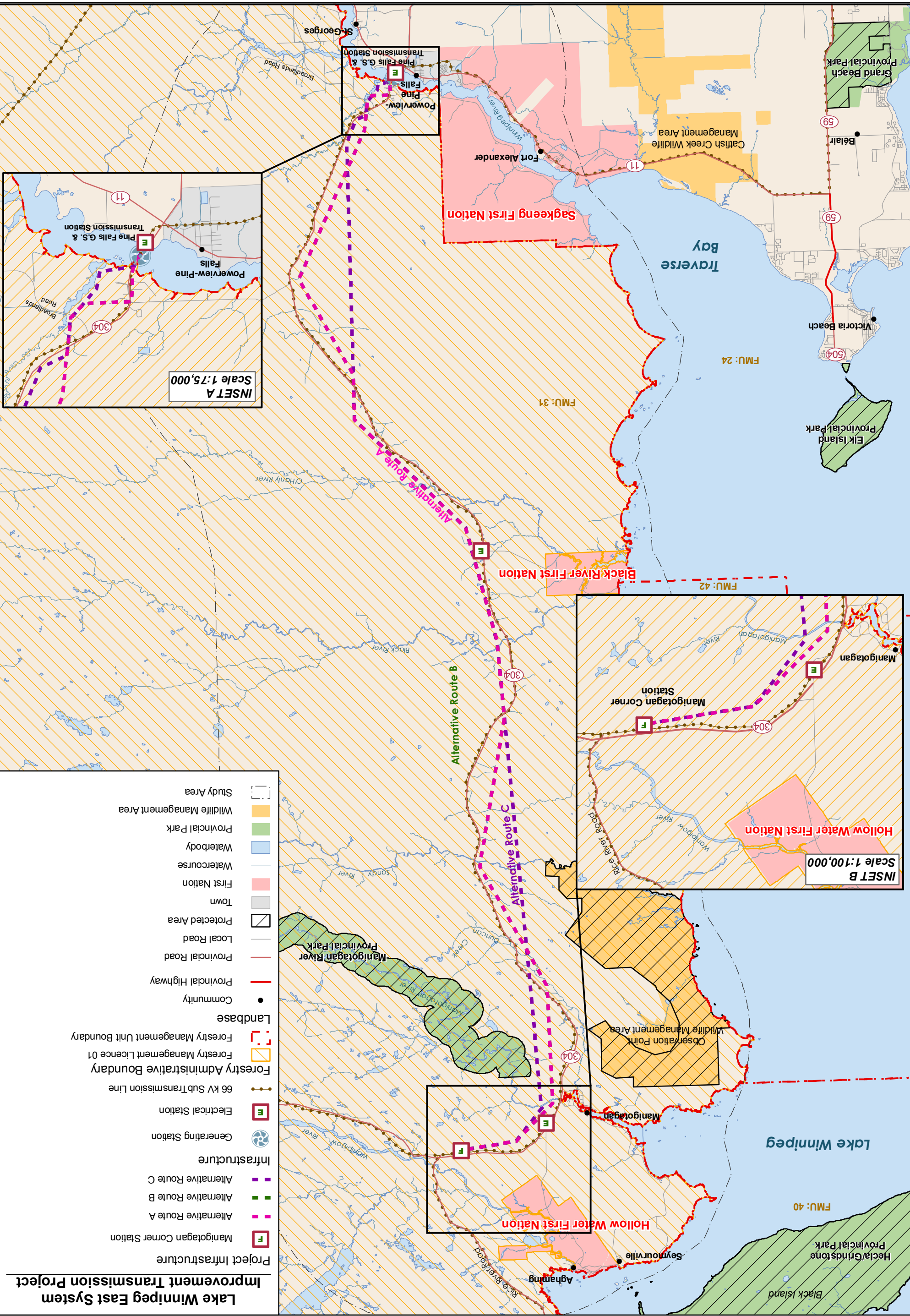
Coordinate System: UTM Zone 14N NAD83
Data Source: MB Hydro, ProvMB, NRCAN
Date Created: November 23, 2012



Ecoregions and Ecodistricts

Lake Winnipeg East System Improvement Transmission Project

- Project Infrastructure**
- Manigotagan Corner Station
 - Alternative Route A
 - Alternative Route B
 - Alternative Route C
- Infrastructure**
- Generating Station
 - Electrical Station
 - 66 kV Subtransmission Line
- Forestry Administrative Boundary**
- Forestry Management Licence 01
 - Forestry Management Unit Boundary
- Landbase**
- Manigotagan Corner Station
 - Alternative Route A
 - Alternative Route B
 - Alternative Route C
- Community**
- Provincial Highway
 - Provincial Road
 - Local Road
 - Protected Area
 - Town
 - First Nation
 - Watercourse
 - Waterbody
 - Provincial Park
 - Wildlife Management Area
 - Study Area

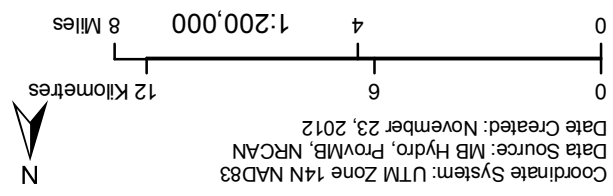


INSET B
Scale 1:100,000

INSET A
Scale 1:75,000

Maskwa Ecological Consulting Inc.

Coordinate System: UTM Zone 14N NAD83
Data Source: MB Hydro, ProVMB, NRCAN
Date Created: November 23, 2012

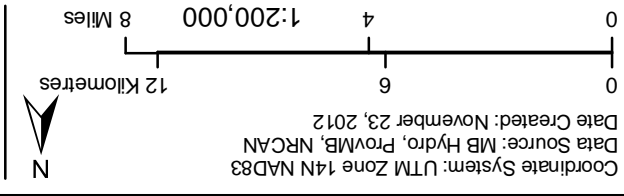


Forestry Administrative Boundaries

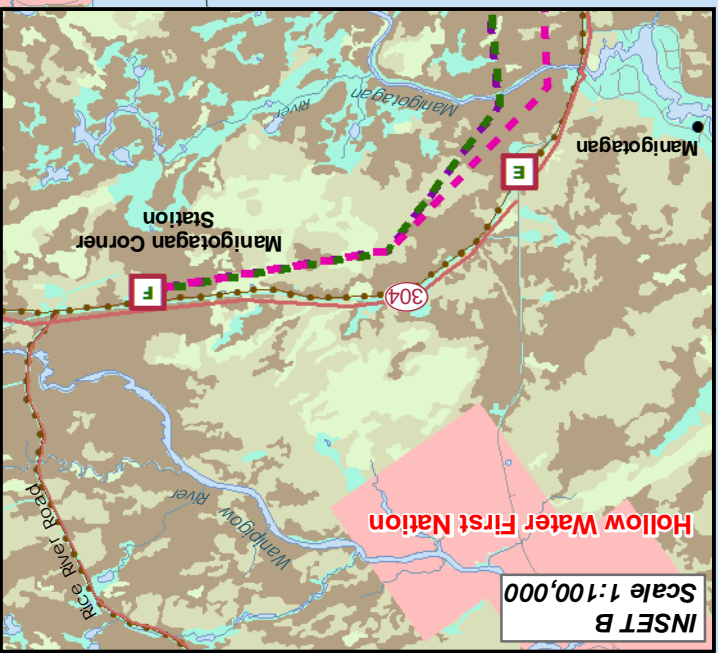
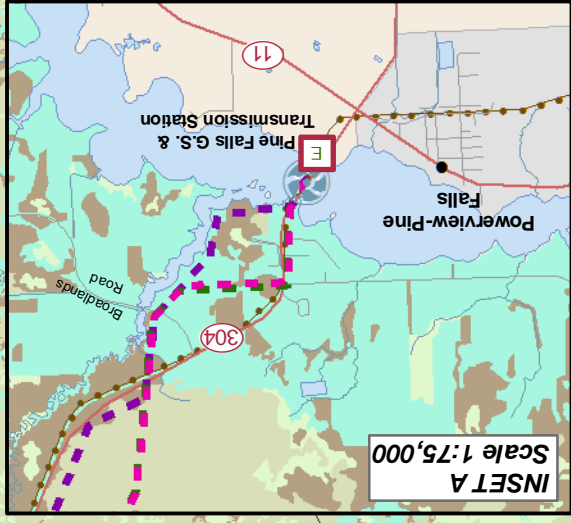
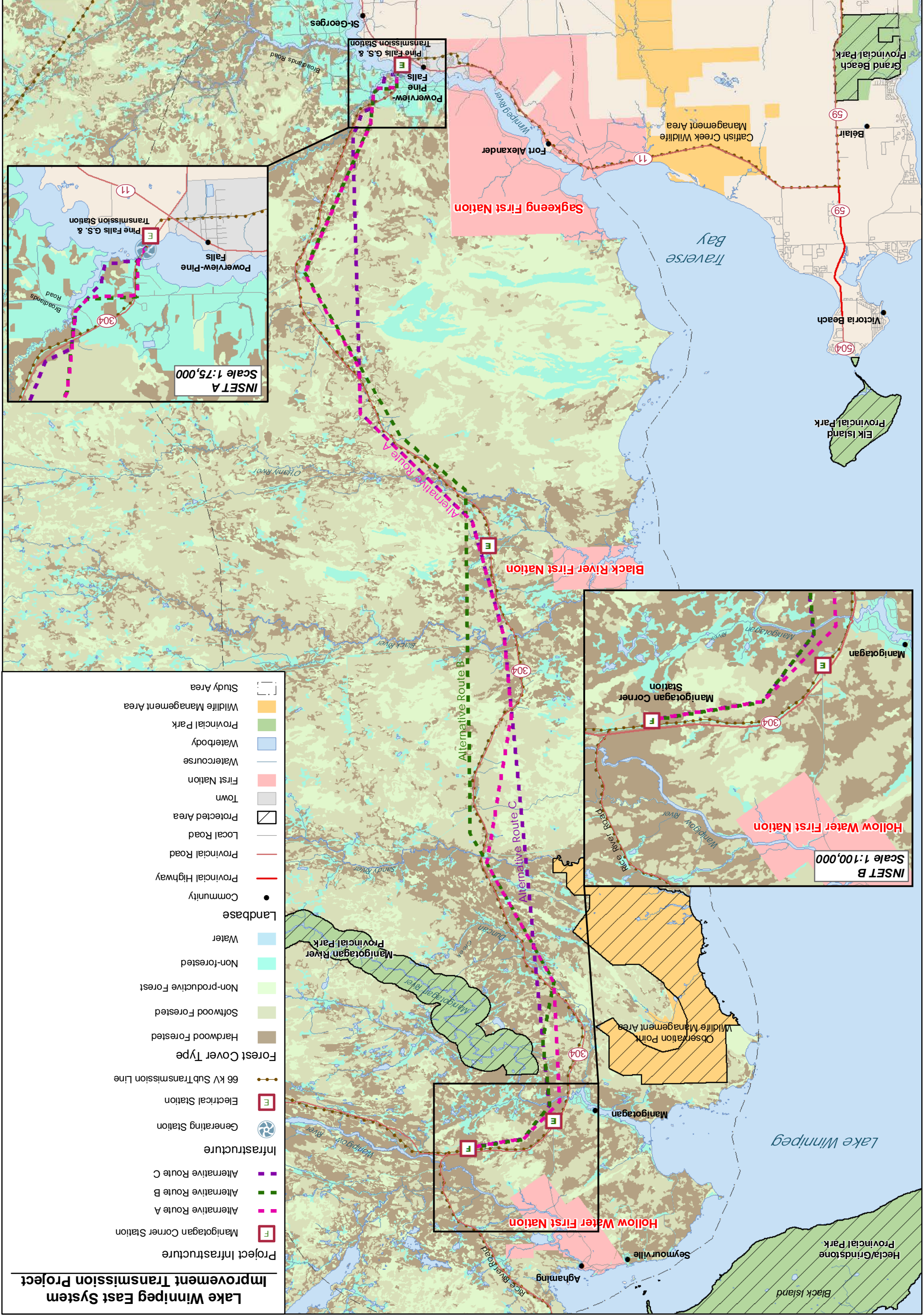
Forest Resource Inventory

Map 4

Maskwa Ecological Consulting Inc.



Coordinate System: UTM Zone 14N NAD83
 Data Source: MB Hydro, ProvMB, NRCAN
 Date Created: November 23, 2012

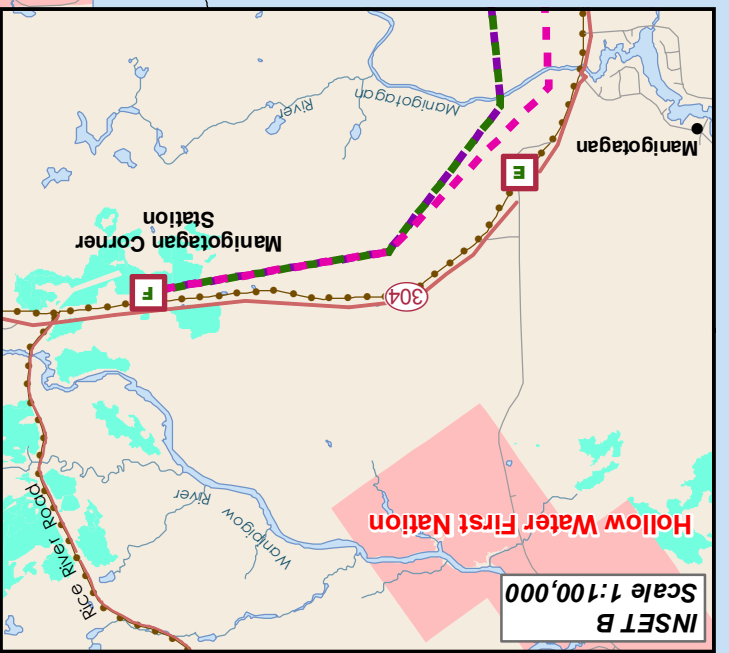
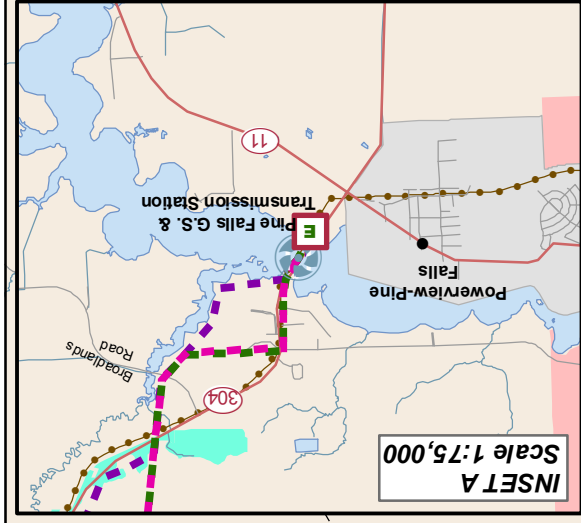
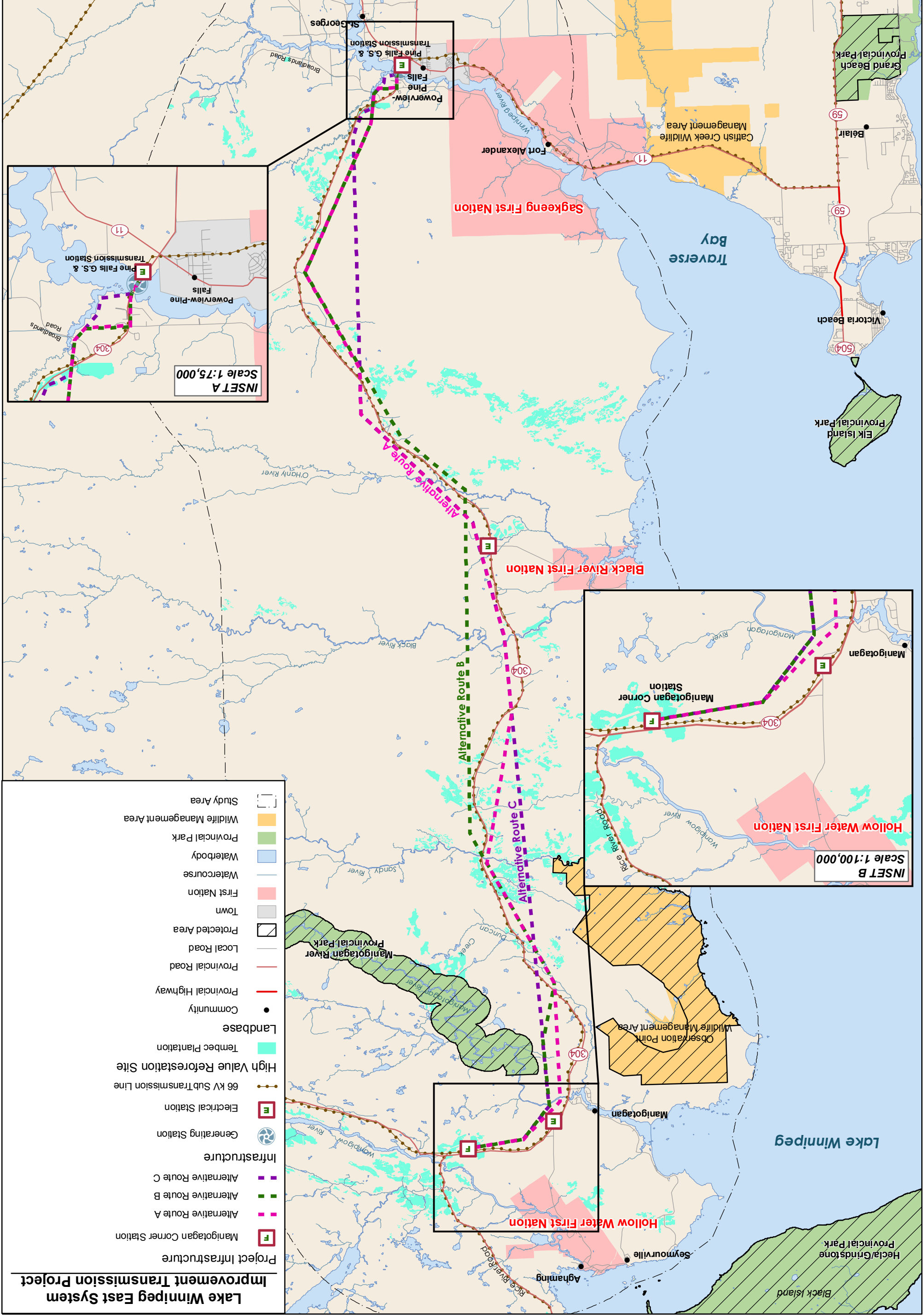
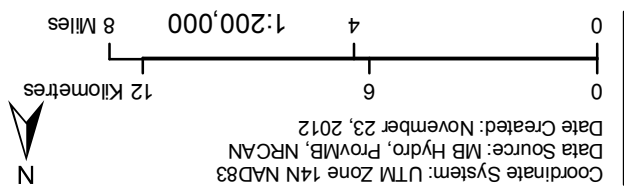


- Lake Winnipeg East System Improvement Transmission Project**
- Project Infrastructure
 - Manigotagan Corner Station (F)
 - Alternative Route A (pink dashed line)
 - Alternative Route B (green dashed line)
 - Alternative Route C (purple dashed line)
 - Generating Station (circle with turbine icon)
 - Electrical Station (E in a box)
 - Infrastructure
 - 66 kV Sub Transmission Line (dotted line)
 - Forest Cover Type
 - Hardwood Forested (brown)
 - Softwood Forested (light green)
 - Non-productive Forest (yellow-green)
 - Non-forested (light tan)
 - Water (blue)
 - Landbase
 - Community (black dot)
 - Provincial Highway (red line)
 - Provincial Road (orange line)
 - Local Road (grey line)
 - Protected Area (hatched box)
 - Town (grey box)
 - First Nation (pink box)
 - Watercourse (blue line)
 - Waterbody (light blue area)
 - Provincial Park (green area)
 - Wildlife Management Area (orange area)
 - Study Area (dashed outline)

High Value Reforestation Sites

Maskwa Ecological Consulting Inc.

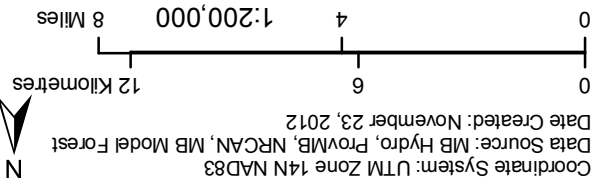
Coordinate System: UTM Zone 14N NAD83
 Data Source: MB Hydro, PROVMB, NRCAN
 Date Created: November 23, 2012



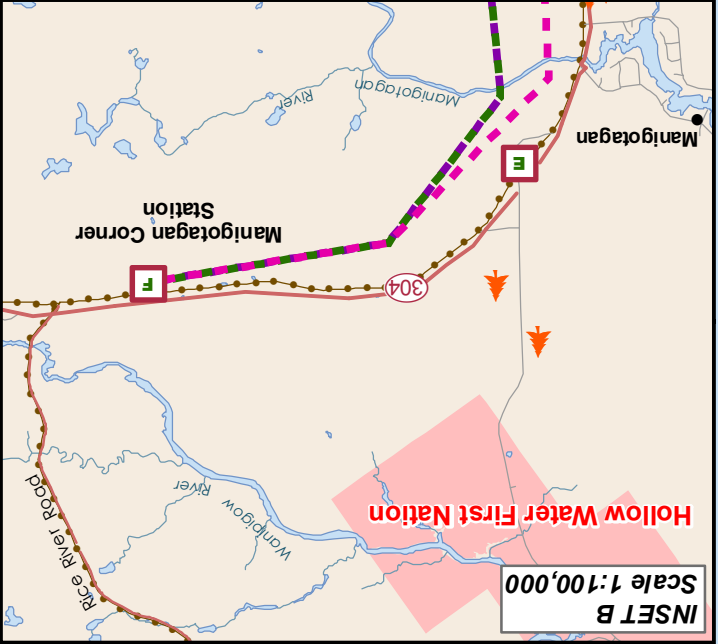
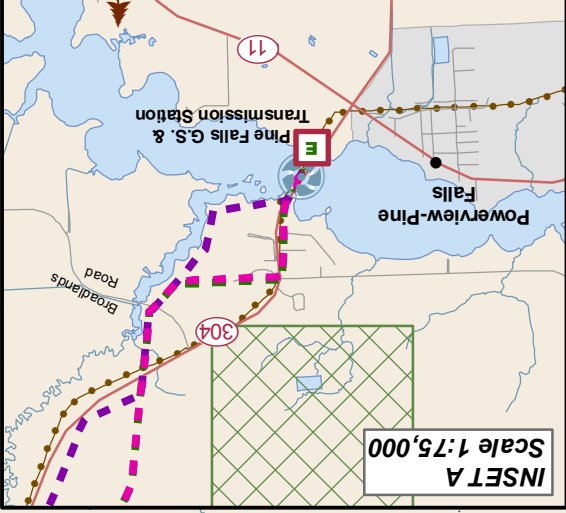
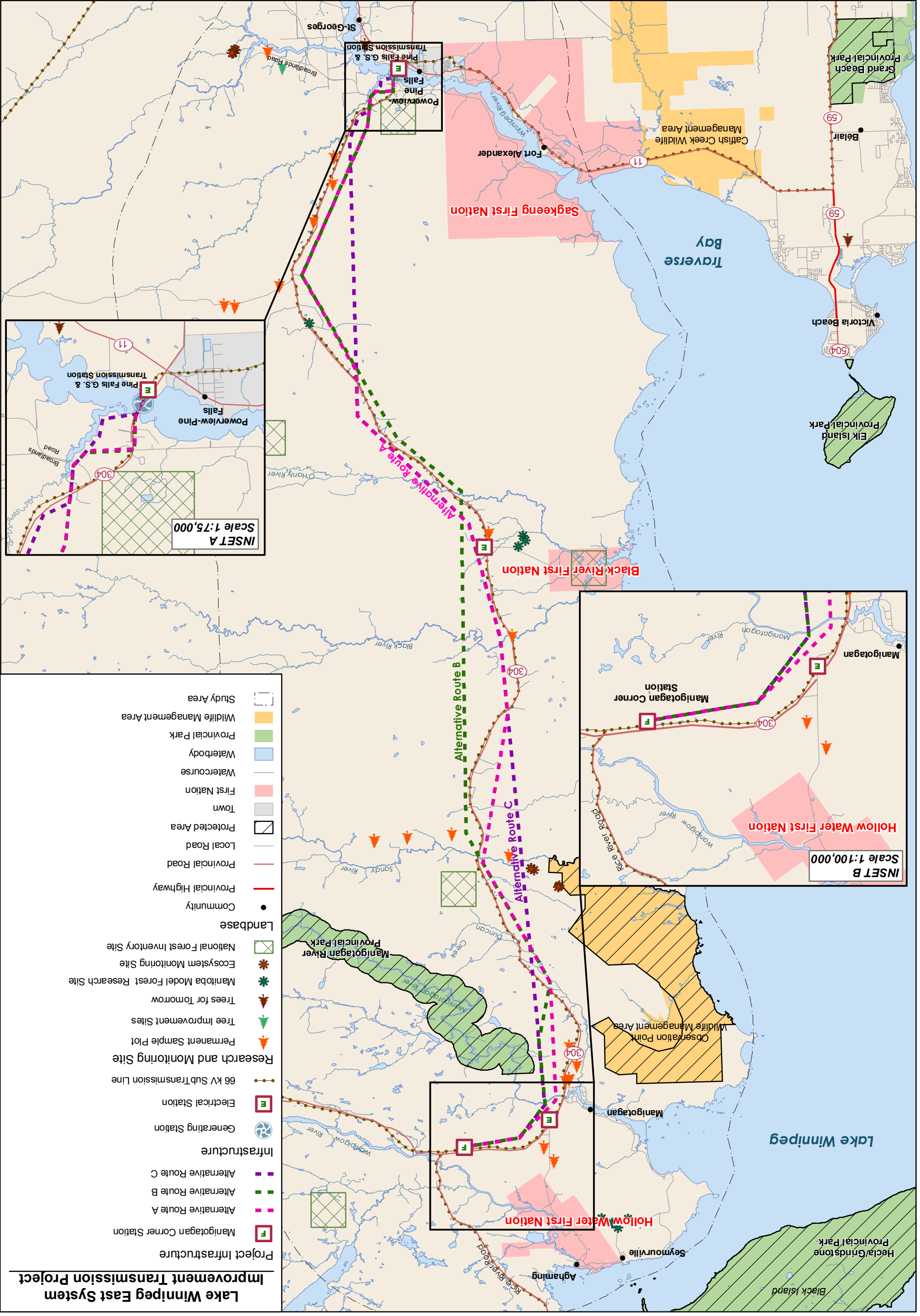
- Lake Winnipeg East System Improvement Transmission Project**
- Project Infrastructure
 - Manigotagan Corner Station
 - Alternative Route A
 - Alternative Route B
 - Alternative Route C
 - Infrastructure
 - Generating Station
 - Electrical Station
 - 66 kV Sub Transmission Line
 - High Value Reforestation Site
 - Tembec Plantation
 - Landbase
 - Community
 - Provincial Highway
 - Provincial Road
 - Local Road
 - Protected Area
 - Town
 - First Nation
 - Watercourse
 - Waterbody
 - Provincial Park
 - Wildlife Management Area
 - Study Area

Research and Monitoring Sites

Maskwa Ecological Consulting Inc.

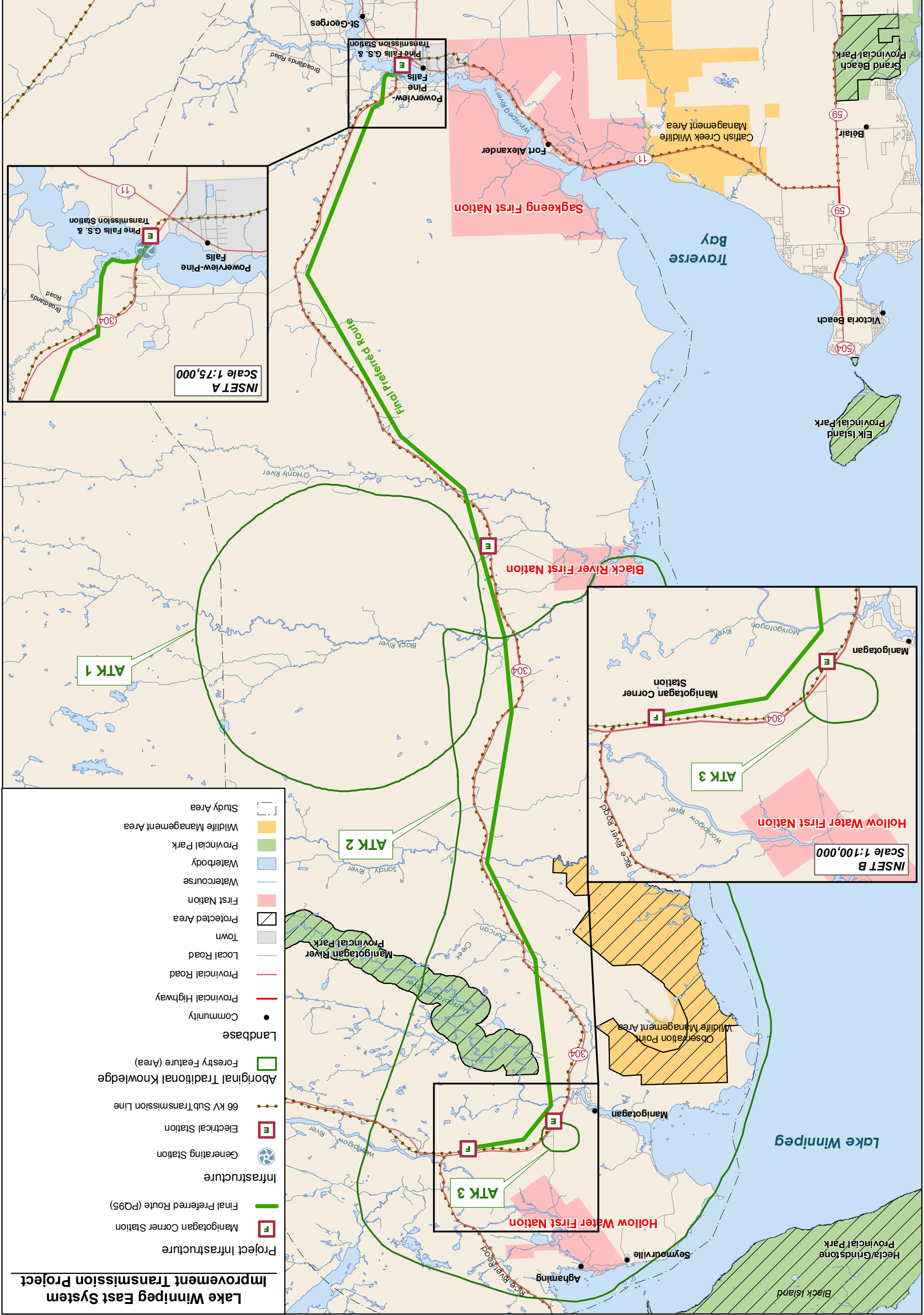


Map 6



- Lake Winnipeg East System Improvement Transmission Project**
- Project Infrastructure
 - Manigotagan Corner Station
 - Alternative Route A
 - Alternative Route B
 - Alternative Route C
 - Infrastructure
 - Generating Station
 - Electrical Station
 - 66 kV Sub-Transmission Line
 - Research and Monitoring Site
 - Permanent Sample Plot
 - Tree Improvement Sites
 - Trees for Tomorrow
 - Manitoba Model Forest Research Site
 - Ecosystem Monitoring Site
 - National Forest Inventory Site
 - Landbase
 - Community
 - Provincial Highway
 - Provincial Road
 - Local Road
 - Protected Area
 - Town
 - First Nation
 - Watercourse
 - Waterbody
 - Provincial Park
 - Wildlife Management Area
 - Study Area

Aboriginal Traditional Knowledge Forestry Values



- Project Infrastructure**
- Manigotagan Corner Station
 - Final Preferred Route (PQ95)
 - ⊙ Generating Station
 - ⊙ Electrical Station
 - 66 kV SubTransmission Line
- Landbase**
- Aboriginal Traditional Knowledge Forestry Feature (Area)
 - Provincial Park
 - Waterbody
 - Wildlife Management Area
- Infrastructure**
- Provincial Highway
 - Provincial Road
 - Local Road
 - Town
 - Protected Area
 - First Nation
 - Watercourse
 - Provincial Park
 - Wildlife Management Area
 - Study Area

INSET A
Scale 1:75,000

INSET B
Scale 1:100,000

ATK 1

ATK 2

ATK 3

ATK 3

