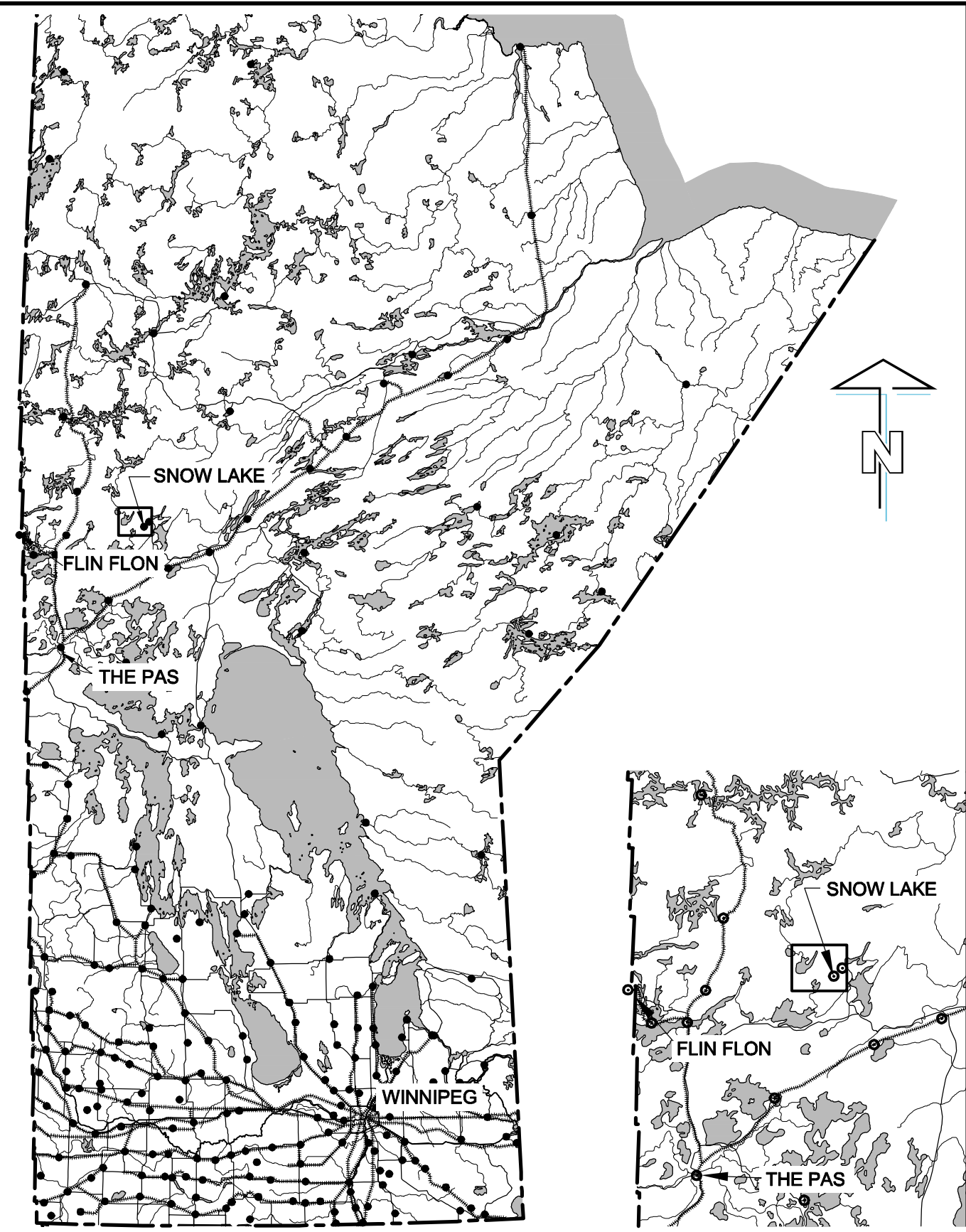


# Drawings

ISS/REV: 0A  
AECOM FILE NAME: 60157028-02-H-F01-R0X.dwg  
Saved By: cloustonec  
PLOT: 12/02/08 11:49:55 AM  
A SIZE 8.5" x 11" (215.9mm x 279.4mm)

This drawing has been prepared for the use of AECOM's client and may not be used, reproduced or relied upon by third parties, except as agreed by AECOM and its client, as required by law or for use by governmental reviewing agencies. AECOM accepts no responsibility, and denies any liability whatsoever, to any party that modifies this drawing without AECOM's express written consent. Do not scale this document. All measurements must be obtained from stated dimensions.



**PLAN**  
SCALE: N.T.S.

 STUDY AREA

Hudson Bay Mining and Smelting Co., Limited  
Proposed Lalor Mine Environmental Baseline Assessment

**Study Area Location Plan**  
**Baseline EA**  
**Drawing - 01**



This drawing has been prepared for the use of AECOM's client and may not be used, reproduced or relied upon by third parties, except as agreed by AECOM and its client, as required by law or for use by governmental reviewing agencies. AECOM accepts no responsibility, and denies any liability whatsoever, to any party that modifies this drawing without AECOM's express written consent. Do not scale this document. All measurements must be obtained from stated dimensions.



**PROPOSED LALOR MINE SITE**

SCALE: NTS

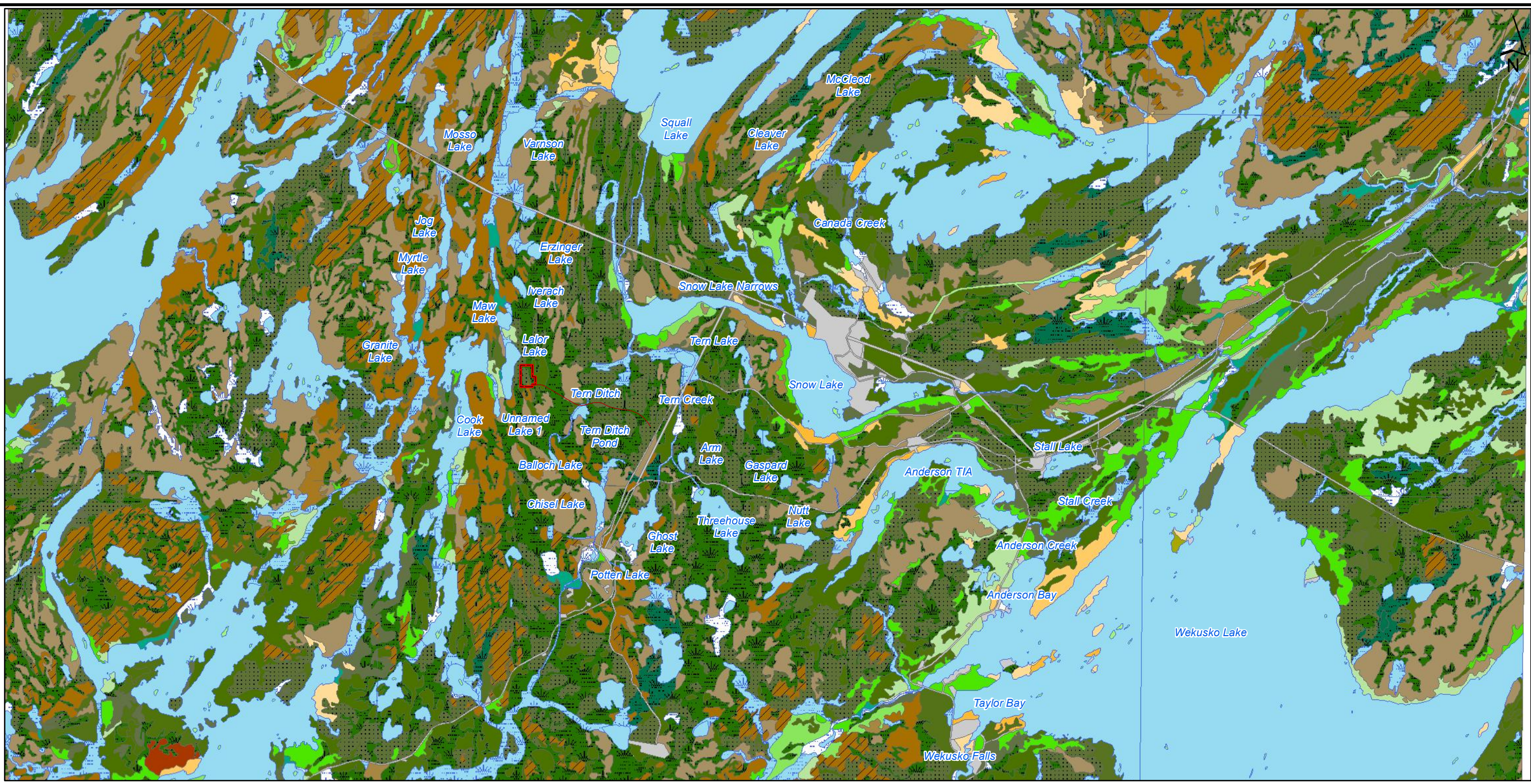
Hudson Bay Mining and Smelting Co., Limited  
Proposed Lalor Mine Environmental Baseline Assessment

### HBMS Mines in Snow Lake Area





A SIZE 8.5" x 11" (215.9mm x 279.4mm)  
 PLOT: 12/02/08 12:05:30 PM  
 ISS/REV: \_\_\_\_\_  
 AECOM FILE NAME: GIS-2012-01-24-Vegetation Cover-60157028  
 SAVED BY: cloustonec  
 This drawing has been prepared for the use of AECOM's client and may not be used, reproduced or relied upon by third parties, except as agreed by AECOM and its client, as required by law or for use by governmental reviewing agencies. AECOM accepts no responsibility, and denies any liability whatsoever, to any party that modifies this drawing without AECOM's express written consent. Do not scale this document. All measurements must be obtained from stated dimensions.



Lalor Footprint	Pine Jack, 50 or less spr	Spruce Black, 40 70 tl	Spruce Black, Treed Rock	Tamarack, 40 70 spr	String Bogs,	Beaver Flood,	Gravel Pits or Mine sites,
<b>Vegetation Cover</b>	Pine Jack, 51 or more	Spruce Black, 50 or less jp	Spruce White, 40 70 bf jp bs	Tamarack Larch Treed Muskeg	Wetland,	Drainage Ditches,	Recreational sites,
<b>Covertime and Percentage</b>	Pine Jack, 71 100	Spruce Black, 50 or less ws	Spruce White, 50 or less bf jp bs	Trembling Aspen	Land clearing,	Rivers,	Roads or Railroads,
Balsam Fir, 50 or less spr	Pine Jack, Treed Rock	Spruce Black, 51 or more	Spruce White, 51 or more	Trembling Aspen, jp	Moist Prairie,	Water,	Townsites or Residential Sites,
Birch, spr bf	Spruce Black, 40 70 bf ws	Spruce Black, 71 100	Spruce White, 71 100	Trembling Aspen, spr bf tl	Muskeg,	Airstrips,	Transmission lines or Pipelines,
Pine Jack, 40 70 spr	Spruce Black, 40 70 jp	Spruce Black, Treed Muskeg	Tamarack, 71 100	Willow	Small Islands,	Precipitous slopes or Fragile sites,	

1,000 0 1,000 2,000  
 m  
**1:100,000**  
 Projection: UTM Zone 14U  
 Datum: CSRS NAD83

Hudson Bay Mining and Smelting Co., Limited  
 Proposed Lalor Mine Environmental Baseline Assessment



Vegetation Cover

Drawing - 04