

KEEWATINOOW CONVERTER STATION - LAGOONS
Field Work Summary Report of Archaeological Investigations within the Vicinity of the
Proposed Lagoons

Prepared For: Manitoba Hydro

Prepared By: Northern Lights Heritage Services Inc.

January 19, 2012

Table of Contents

- 1.0 Introduction 1
- 2.0 Previous Archaeological Investigations..... 1
 - 2.1 I.D. Systems & M.E. Kelly Consulting..... 1
 - 2.2 The 2003 Post-Impact Assessment of the Limestone Generating Station - NLHS..... 3
- 3.0 Heritage Resource Impact Assessment Conawapa Generation Project and BiPole III Transmission: A Major Reliability Project..... 3
 - 3.1 2004 HRIA 3
 - 3.2 2008 HRIA 3
 - 3.3 2010 HRIA 6
 - 3.4 2011 HRIA 6
- 4.0 Summary 6
- References Cited 7

1.0 Introduction

Northern Lights Heritage Services Inc. (NLHS) has completed eight years of heritage resource impact assessment (HRIA) for the proposed Conawapa Generation Project and two years of HRIA for the proposed BiPole III Transmission: A Major Reliability Project, including the Keewatinoow Converter Station Facility.

The requirements for conducting HRIA are outlined by provisions of *The Heritage Resources Act* (Government of Manitoba 1986). An HRIA is required when environmental effects associated with a project may result in changes to: physical and cultural heritage; traditional and current Aboriginal land use; and, structure, site or thing that is of historical, archaeological, palaeontological or architectural significance.

The following document is a summary of archaeological field investigations that have occurred at and in proximity to the lagoon site associated with the proposed Keewatinoow Converter Station camp facilities. The site is located immediately south of the Keewatinoow Start-up camp, formerly known as the Conawapa exploration camp.

2.0 Previous Archaeological Investigations

2.1 I.D. Systems & M.E. Kelly Consulting, 1989-90

M.E. Kelly Consulting in conjunction with IDS Ltd. conducted preliminary assessments for the Conawapa GS in the late 1980s (IDS/Kelly, 1989, 1990). In 1989, Kelly focused on pedestrian survey and testing of the proposed generating station and dam construction facilities areas such as the construction work area, substation, camp, sewage lagoon and the materials storage area (Figure 1). No heritage resources were noted within the construction facilities areas. The assessment of the borrow areas revealed only one archaeological site, the Danke Site HeKk-1. The Danke site is located approximately 1 kilometer downstream of Conawapa Axis B on the west side of the river. Visibility of the ground surface was excellent due to recent deforestation by fire, and core sampling which had occurred in this area. Hudson Bay Lowlands chert flakes and cores were recovered, however no culturally diagnostic artifacts were found.

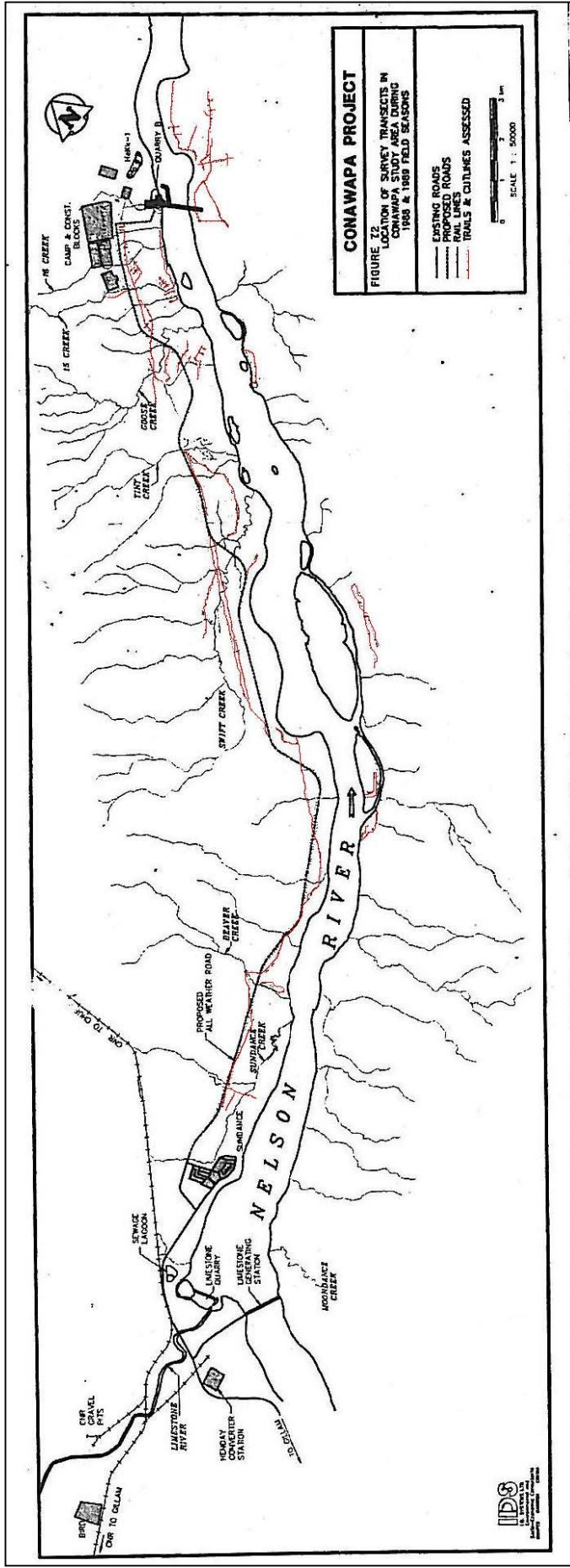


Figure 1. Location of M. E. Kelly Survey Transects in Conawapa Study Area during 1988 & 1989 Field seasons. (Provided by IDS/M.E. Kelly 1990)

2.2 Post-Impact Assessment of the Limestone Generating Station – NLHS - 2003

In 2003 NLHS conducted archaeological post-project assessment of the Limestone Generating Station (NLHS 2004). This project was to determine the after effects on known heritage resources as well as to expand the archaeological knowledge of the Lower Nelson River. The survey covered an area from the Limestone Generating Station to the Nelson River estuary.

As part of the 2003 survey, the Conawapa/Danke Site (HeKk-01) was reinvestigated. Lithic debitage was found from the Pre-European Contact period.

3.0 Heritage Resource Impact Assessment Conawapa Generation Project and BiPole III Transmission: A Major Reliability Project

Archaeological investigations conducted by NLHS directly related to the proposed Conawapa Generation Project Environment Impact Assessment began in 2004. NLHS has conducted archaeological investigations for the Heritage Resource Impact Assessment (HRIA) each field season for the Conawapa Project to the present time (NLHS 2005; 2006a, b; 2007a, b, c; 2008a, b; 2009a, b, c, 2011a, b, 2012c).

The area has also been surveyed as part of the proposed BiPole III Transmission: A Major Reliability Project (NLHS 2010, 2012a, b, d). During these HRIAs, the area in proximity to the proposed Keewatinoow lagoons was surveyed on numerous occasions (NLHS 2005, 2009a, 2011b, 2012c, d) (Figure 2).

The following section summarizes the archaeological investigations conducted by NLHS between 2004 and 2011 in the vicinity of the proposed Keewatinoow lagoons, which was undertaken as part of the Conawapa Generation and BiPole III Transmission projects.

3.1 2004 HRIA

As part of the 2004 Conawapa Generation Project HRIA (NLHS 2005), an area on the west side of the Nelson River in proximity to Conawapa camp/Flat Rapids was assessed through pedestrian survey and shovel testing. Results from the survey in proximity to the proposed Keewatinoow lagoons were negative for heritage resources and it was noted that most of the area had been previously impacted by camp-related construction (e.g. roadways, helicopter pads, etc.).

3.2 2008 HRIA

The 2008 HRIA included a survey of the Conawapa camp footprint (NLHS 2009a). An area north of the potential Keewatinoow lagoons was assessed by pedestrian survey and shovel testing. No

heritage resources were found during this component of the HRIA. The Danke/Conawapa site (HeKk-01) was also reinvestigated in 2008 with no heritage resources noted.

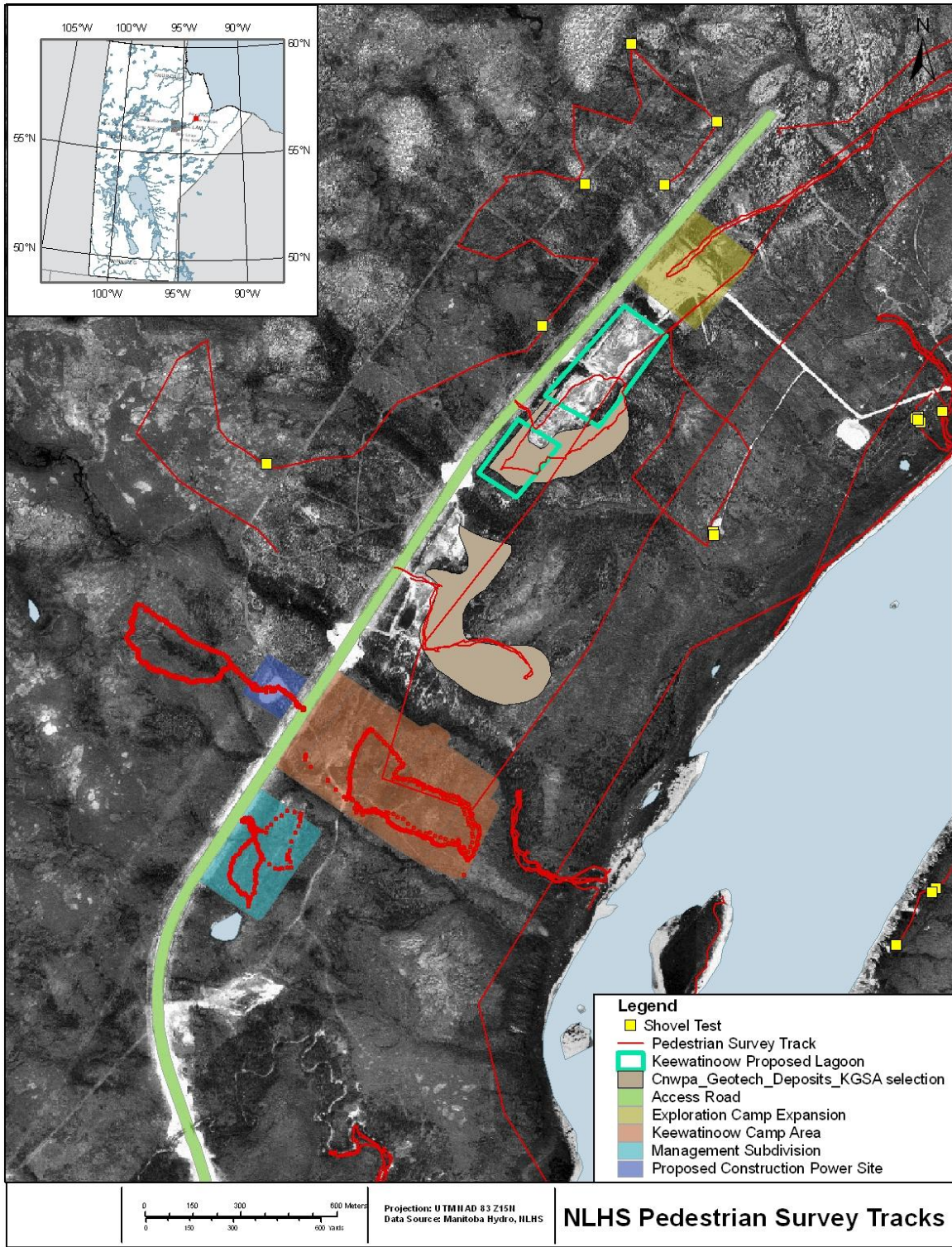


Figure 2. Map of GPS Tracking related to archaeological surveys of the Bipole III Lagoons area, 2003-2011.

3.3 2010 HRIA

The 2010 assessment (NLHS 2011b) included a number of surveys related to Conawapa found in proximity to the proposed Keewatinoow lagoons. Proposed borrow area N-10 to the west of the former Conawapa camp was surveyed; the area was negative for heritage resources and it was noted that most of the area had been previously impacted (e.g. gravel pits, etc.). Pedestrian survey and shovel testing was undertaken to the east of the proposed lagoon area at potential borrow areas NBI-I, NBI-II and NBI-III; as with borrow area N-10, there were no heritage concerns identified.

The Danke/Conawapa site (HeKk-01) was reinvestigated in 2010 with no heritage resources noted. A recommendation was made that the general site area should continue to be avoided during construction or access-related activities.

3.4 2011 HRIA

In 2011, the HRIA for the potential Conawapa Generating Project (NLHS 2012c, in progress) included a pedestrian survey of "18 Creek", located south of the proposed Keewatinoow lagoons. No heritage material was found at this creek which was partially inaccessible because of thick vegetation.

The 2011 HRIA related to BiPole III (NLHS 2012d, in progress) included pedestrian survey and shovel testing of the manager's camp, main camp, exploration camp and proposed lagoons. No heritage resources were observed in the areas assessed and it was noted that many areas had been previously impacted (i.e. roadways/cut lines).

40 Summary

No heritage resources have been discovered to date within the areas proposed as lagoons. The site is located immediately south of the Keewatinoow Start-up camp, formerly known as the Conawapa exploration camp. Given that archaeological investigations and accompanying extensive shovel testing have yielded negative results and that previous development and borrow have disturbed the location of the lagoon, the area has been determined to be of low potential for archaeological sites.

Should heritage resources be encountered during the lagoon construction and related activities *The Heritage Resources Act* (1986) and the *Policy Respecting the Reporting, Exhumation and Reburial of Found Human Remains* (1987) must be followed.

References Cited

Government of Canada

1992 *The Canadian Environmental Assessment Act*. S.C. 1992 c. 37

Government of Manitoba

1986 *The Heritage Resources Act*. C.C.S.M. c. H39.1

1987 *The Environment Act*. C.C.S.M. c. E125

IDS, & M.E. Kelly

1989 *Final Report: Heritage Resources Impact Assessment Conawapa Project All Weather Road and Borrow Quarries Component*. Report prepared for Manitoba Hydro and Manitoba Historic Resources Branch by I.D. Systems Ltd. in association with M.E. Kelly consulting.

1990 *Final Report: Heritage Resources Impact Assessment Conawapa Project Construction Facilities Areas and Borrow Quarries Component*. Report prepared for Manitoba Hydro and Manitoba Historic Resources Branch by I.D. Systems Ltd. in association with M.E. Kelly consulting.

Northern Lights Heritage Services Inc.

2004 *Heritage Resource Post-Impact Assessment Limestone Generating Station: The Lower Nelson River from Limestone to Port Nelson*. Ms on file Northern Lights Heritage Services Inc. Winnipeg, Mb

2005 *Conawapa Generating Station: Heritage Resource Impact Assessment: 2004 Field Assessment Report*. Ms on file Northern Lights Heritage Services Inc. Winnipeg, Mb.

2006a *Conawapa Generating Station: Archaeological Field Investigations Component Heritage Resource Impact Assessment*. Ms on file Northern Lights Heritage Services Inc. Winnipeg, Mb.

2006b *Conawapa Project: Archaeological Investigations at the Weir River site (HfKi-01) Interim Report*. Ms on file Northern Lights Heritage Services Inc. Winnipeg, Mb.

2007a *Conawapa Generating Station: Excavation of the Weir River Site (HfKi-1) Heritage Resource Impact Assessment*. Ms on file Northern Lights Heritage Services Inc, Winnipeg Mb.

2007b *Conawapa Generating Station: Archaeological Field Component Preliminary Investigations at the Selkirk Settler Site (HfKe-1) Heritage Resource Impact Assessment*. Ms on file Northern Lights Heritage Services Inc. Winnipeg, Mb.

- 2007c *Conawapa Generating Station: Deer Island Heritage Resource Impact Assessment*. Ms Northern Lights Heritage Services Inc., Winnipeg, Mb.
- 2008a *Conawapa Generating Station: 2007 Archaeological Field Investigations Component, Heritage Resource Impact Assessment*. Ms Northern Lights Heritage Services Inc. Winnipeg, Mb.
- 2008b *Conawapa Generating Station: Student Archaeology Project 2007 Excavation of the Weir River Site (HfKi-1)*. Ms Northern Lights Heritage Services Inc. Winnipeg, Mb.
- 2009a *Conawapa Generating Station: 2008 Archaeological Field Investigations Component, Heritage Resource Impact Assessment*. Heritage Permit Report A36-08. Ms on file Northern Lights Heritage Services Inc. Winnipeg, Mb.
- 2009b *Conawapa Generating Station: Archaeological Field Investigations Excavation of the Selkirk Settler's Advance Party Officer's Quarters, HfKe-04*. Heritage Permit Report A33-08. Ms on file Northern Lights Heritage Services Inc. Winnipeg, Mb.
- 2009c *Conawapa Generation Project 2009: Archaeological Field Investigations Heritage Resource Impact Assessment*. Heritage Permit Report A19-09. Ms on file Northern Lights Heritage Services Inc. Winnipeg, Mb.
- 2010 *BiPole III: Keewatinoow Converter Station 2010 Geophysical Survey of Rock Features at HdKI-01 A Component of the Heritage Resources Impact Assessment*. Heritage Permit Report A49-10. Ms on file Northern Lights Heritage Services Inc. Winnipeg, Mb.
- 2011a *Conawapa Generating Project 2010 Archaeological Field Investigations: Monitoring of the Selkirk Settler's Advance Party Sites HfKe-01 and HfKe-04 Heritage Resource Impact Assessment*. Heritage Permit Report A45-10. Ms on file Northern Lights Heritage Services Inc. Winnipeg, Mb.
- 2011b *Conawapa Generating Project 2010 Archaeological Field Investigations Heritage Resource Impact Assessment*. Heritage Permit Report A20-10. Ms on file Northern Lights Heritage Services Inc. Winnipeg, Mb.
- 2012a *BiPole III Transmission: A Major Reliability Project 2010 Heritage Resources Impact Assessment Archaeological Site Investigations for the Keewatinoow Converter Station*. Heritage Permit Report A49-10. Ms in progress Northern Lights Heritage Services Inc. Winnipeg, Mb.
- 2012b *BiPole III Transmission: A Major Reliability Project 2011 Heritage Resources Impact Assessment Archaeological Site Investigations for the Keewatinoow Converter Station*. Heritage Permit Report A11-28. Ms in progress Northern Lights Heritage Services Inc. Winnipeg, Mb.

2012c *Conawapa Generating Project 2011 Archaeological Field Investigations Heritage Resource Impact Assessment*. Heritage Permit Report A38-11. Ms in progress Northern Lights Heritage Services Inc. Winnipeg, Mb.

2012d *BiPole III Transmission: A Major Reliability Project 2011 Heritage Resources Impact Assessment Archaeological Investigations*. Heritage Permit Report A43-11, A44-11 & A45-11. Ms in progress Northern Lights Heritage Services Inc. Winnipeg, Mb.