

Bipole III Transmission Project

Project Infrastructure

- Final Preferred Route
- Planning Segment Division
- Local Study Area

Infrastructure

- Converter Station
- Generating Station
- Bipole I and II
- Transmission Line

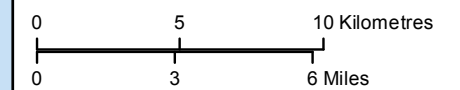
Access

- 12 Proposed Access Route
 - 12RT Proposed Access Point*
 - 12 Abandoned Rail crossing
 - 12 Rail crossing
 - 12 Transmission Line Crossing
 - 12 Major Stream Crossing
- * R=Access point along existing highway
T= Access point along Bipole III Final Preferred Route

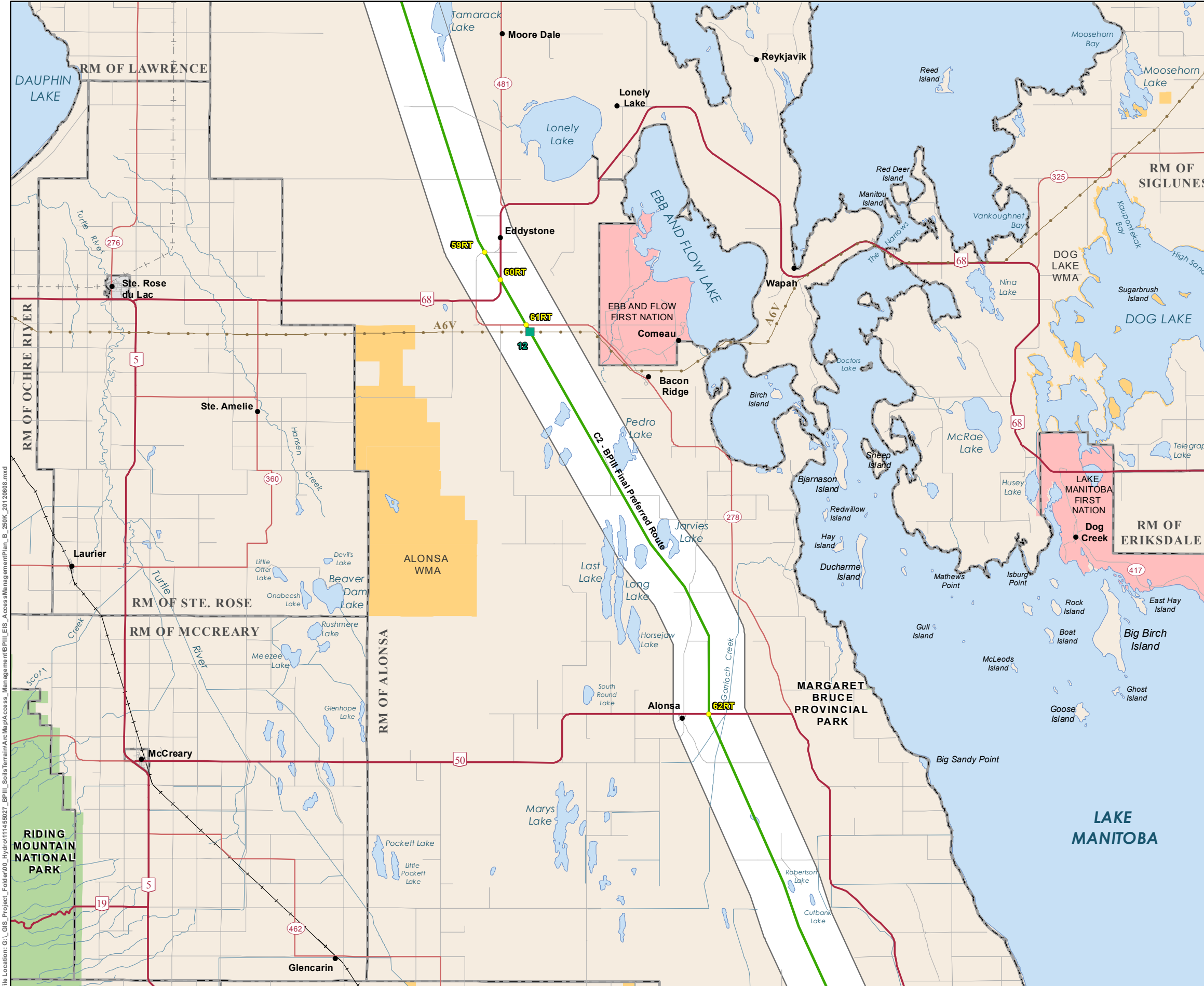
Landbase

- Community
- City / Town
- First Nation
- National/Provincial Park
- Rural Municipality
- Wildlife Management Area

Coordinate System: UTM Zone 14N NAD83
Data Source: MBHydro, Stantec, ProvMB
Date Created: October 08, 2013



Construction Access Opportunities



File Location: G:\GIS\Project_Folder\05_Hydro\1145927_BPHI_Soils\Terrain\Access_Management\BPHI_EIS_Access_Management\Plan_B_250K_20120808.mxd

G:\GIS_Project_Folder\0221-Hydro\11255079_BPIII_Soils\DD\BPIII\AccessDatabaseTables_2010412.mxd

PROPOSED ACCESS POINTS								
<i>ID</i>	<i>Easting</i>	<i>Northing</i>	<i>Comments</i>	<i>Access Type</i>	<i>Distance to Previous Access Point Along ROW</i>	<i>Distance to Next Access Point Along ROW</i>	<i>Distance to Previous Access Point Along Road</i>	<i>Distance to Next Access Point Along Road</i>
59RT	488460	5658907	Municipal road crossing	Road/ROW	50km	2.3km	72km	3km
60RT	489527	5657029	PTH 68 crossing	Road/ROW	2.3km	3.6km	3km	8km
61RT	491258	5653983	PR 278 crossing	Road/ROW	3.6km	30km	8km	43km
62RT	503571	5627728	PTH 50 crossing	Road/ROW	30km	25km	43km	37km

TRANSMISSION LINE CROSSINGS			
<i>ID</i>	<i>Easting</i>	<i>Northing</i>	<i>T-Line Name</i>
12	491526	5653508	Ashern to Vermillion

Note: Existing mile road crossings have not been identified for Agro-Manitoba

* Disclaimer: Municipal roads may be used for access as required

Bipole III Transmission Project

Project Infrastructure

- Final Preferred Route
- Planning Segment Division
- Local Study Area

Infrastructure

- Converter Station
- Generating Station
- Bipole I and II
- Transmission Line

Access

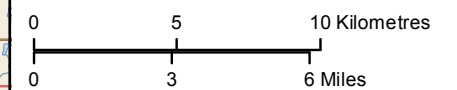
- Proposed Access Route
- Proposed Access Point*
- Abandoned Rail crossing
- Rail crossing
- Transmission Line Crossing
- Major Stream Crossing

* R=Access point along existing highway
T= Access point along Bipole III Final Preferred Route

Landbase

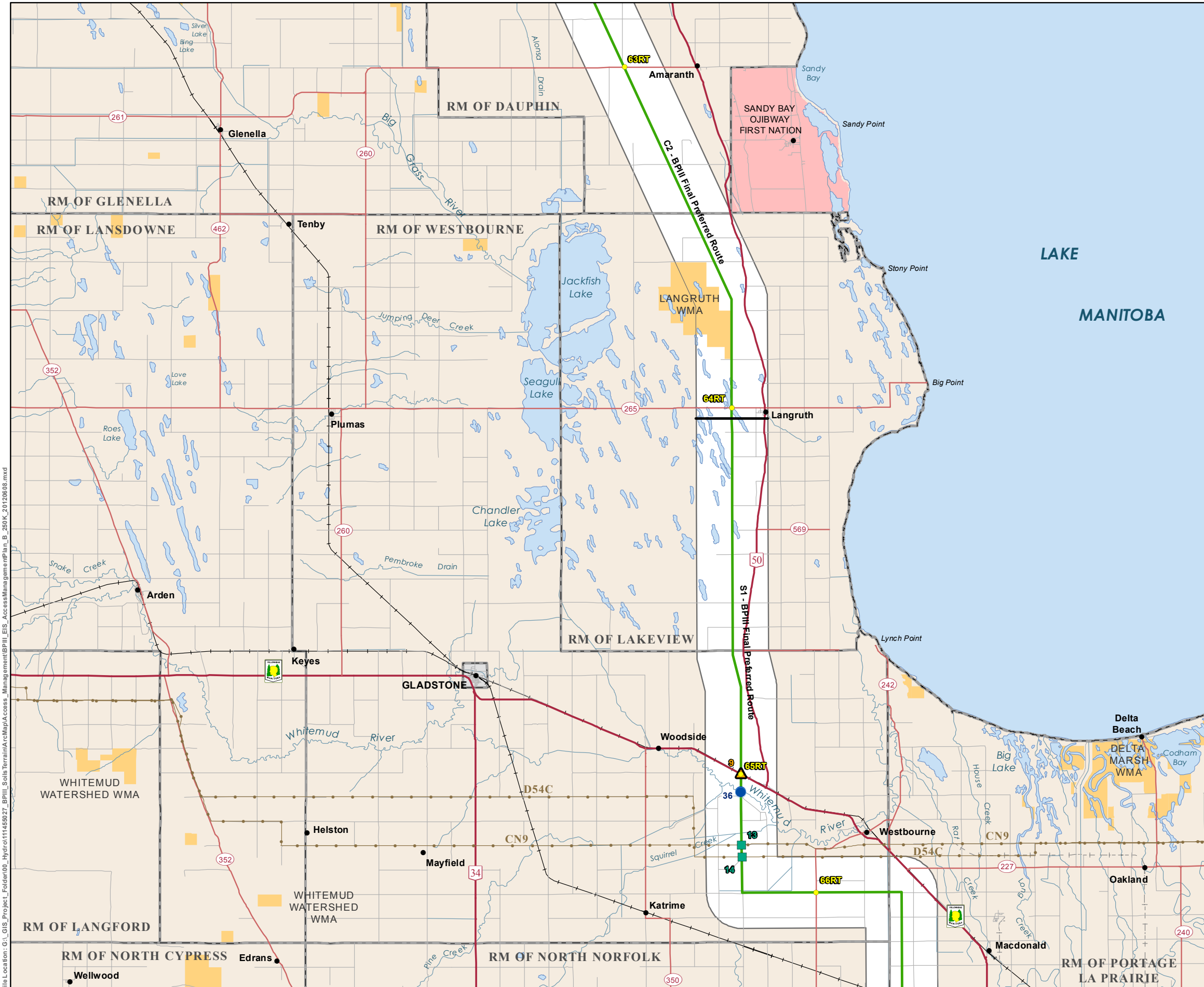
- Community
- City / Town
- First Nation
- National/Provincial Park
- Rural Municipality
- Wildlife Management Area

Coordinate System: UTM Zone 14N NAD83
Data Source: MBHydro, Stantec, ProvMB
Date Created: October 08, 2013



1:250,000

Construction Access Opportunities



File Location: G:\GIS\Project_Folder\05_Hydro\11458927_BP111_Soils_Terrain\ArcMap\Access_Management\BP111_EIS_Access_Management\MapPlan_B_250K_20121008.mxd

G:\GIS_Projects\Folder0221-Hydro\11255079_BPIII_Soils\DD\BPIII\AccessDatabaseTables_2010412.indd

STREAM CROSSINGS									
ID	Easting	Northing	Waterbody Name	Access Notes and Comments	Water Width (m)	Channel Width (m)	Bank Stability (Right Bank)	Bank Stability (Left Bank)	Substrate
36	521460	5555872	Whitemud River	0.9, 0.7m high steep unstable banks	11	32	50	30	Fines

PROPOSED ACCESS POINTS									
ID	Easting	Northing	Comments	Access Type	Distance to Previous Access Point Along ROW	Distance to Next Access Point Along ROW	Distance to Previous Access Point Along Road	Distance to Next Access Point Along Road	
63RT	513598	5604787	PR 261 crossing	Road/ROW	25km	24.6km	37km	31km	
64RT	520838	5581800	PR 265 crossing	Road/ROW	24.6km	25km	31km	30km	
65RT	521463	5557085	PTH 16 crossing	Road/ROW	25km	13km	30km	35km	
66RT	526491	5549092	PR 242 crossing	Road/ROW	13km	19km	15.5km	19km	

TRANSMISSION LINE CROSSINGS				
ID	Easting	Northing	T-Line Name	
13	521503	5552316	Parkdale to Neepawa	
14	521515	5551485	Dorsey to Cornwallis	

RAILWAY CROSSINGS				
ID	Easting	Northing	Status	
9	521463	5557122	Rail	

Note: Existing mile road crossings have not been identified for Agro-Manitoba

* Disclaimer: Municipal roads may be used for access as required



36-Whitemud River

Bipole III Transmission Project

Project Infrastructure

- Final Preferred Route
- Planning Segment Division
- Local Study Area

Infrastructure

- Converter Station
- Generating Station
- Bipole I and II
- Transmission Line

Access

- Proposed Access Route
 - Proposed Access Point*
 - Abandoned Rail crossing
 - Rail crossing
 - Transmission Line Crossing
 - Major Stream Crossing
- * R=Access point along existing highway
T= Access point along Bipole III Final Preferred Route

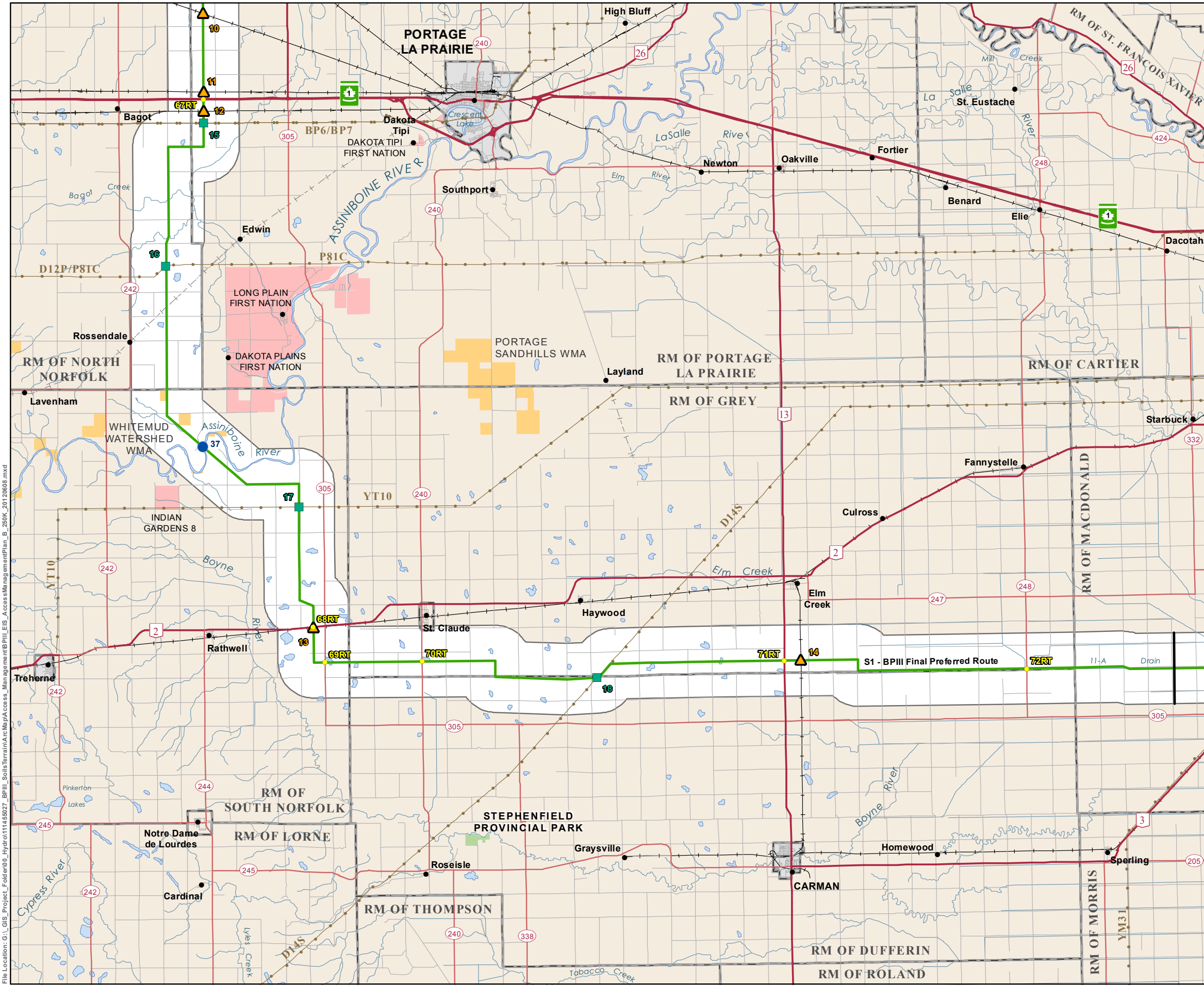
Landbase

- Community
- City / Town
- First Nation
- National/Provincial Park
- Rural Municipality
- Wildlife Management Area

Coordinate System: UTM Zone 14N NAD83
 Data Source: MBHydro, Stantec, ProvMB
 Date Created: October 08, 2013

1:250,000

Construction Access Opportunities



File Location: G:\GIS\Project_Folder\05_Hydro\11458927_BP III_Soils Terrain ArcMap\Access_Management\BP III_LEIS_Access_Management\Plan_B_250K_20120808.mxd

G:\GIS_Project_Folder\0221-Hydro\11255079_BPIII_Soils\BIPIII\AccessDatabaseTables_2010412.mxd

STREAM CROSSINGS									
ID	Easting	Northing	Waterbody Name	Access Notes	Water Width (m)	Channel Width (m)	Bank stability (Right Bank)	Bank stability (Left Bank)	Substrate
37	532307	5512258	Assiniboine River		55	55	0	45	Fines

PROPOSED ACCESS POINTS								
ID	Easting	Northing	Comments	Access Type	Distance to Previous Access Point Along ROW	Distance to Next Access Point Along ROW	Distance to Previous Access Point Along Road	Distance to Next Access Point Along Road
67RT	532356	5535948	PTH 1 crossing	Road/ROW	32km	45km	19km	43km
68RT	539818	5500066	PTH 2 crossing	Road/ROW	45km	3.3km	43km	3.5km
69RT	540616	5497665	PR 305 crossing	Road/ROW	3.3km	6.7km	3.5km	14km
70RT	547199	5497723	PR 240 crossing	Road/ROW	6.7km	26km	14km	33km
71RT	571826	5497796	PTH 13 crossing	Road/ROW	26km	17.2km	33km	22km
72RT	588278	5497244	PR 247 crossing	Road/ROW	17.2km	15km	22km	15km

TRANSMISSION LINE CROSSINGS			
ID	Easting	Northing	T-Line Name
15	532366	5534318	Brandon G.S. to Portage
16	529775	5524573	Dorsey to Cornwallis
17	538839	5508229	Laverendrye to Treherne
18	559088	5496648	Dorsey to St. Leon

RAILWAY CROSSINGS			
ID	Easting	Northing	Status
10	532322	5541775	Rail
11	532354	5536455	Rail
12	532361	5535131	Rail
13	539818	5500028	Rail
14	572936	5497810	Rail

Note: Existing mile road crossings have not been identified for Agro-Manitoba
 * Disclaimer: Municipal roads may be used for access as required



North South Consultants Inc.

37-Assiniboine River

Bipole III Transmission Project

Project Infrastructure

- Final Preferred Route
- Planning Segment Division
- Converter Station Site
- AC Collector Lines
- Ground Electrode Line
- Ground Electrode Site
- Construction Power (KN36)
- Construction Power Site
- Construction Camp Site
- Local Study Area

Infrastructure

- Converter Station
- Generating Station
- Bipole I and II
- Transmission Line

Access

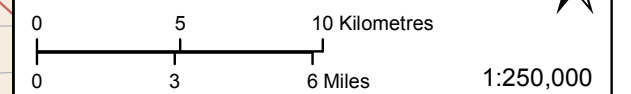
- 12 Proposed Access Route
- 12RT Proposed Access Point*
- 12 Abandoned Rail crossing
- 12 Rail crossing
- 12 Transmission Line Crossing
- 12 Major Stream Crossing

* R=Access point along existing highway
T= Access point along Bipole III Final Preferred Route

Landbase

- Community
- City / Town
- First Nation
- National/Provincial Park
- Rural Municipality
- Wildlife Management Area

Coordinate System: UTM Zone 14N NAD83
Data Source: MBHydro, Stantec, ProvMB
Date Created: October 08, 2013



Construction Access Opportunities

File Location: G:\GIS\Project_Folder\00_Hydro\11456027_BP111_SoilsTerrain\MapAccess_Management\BP111_EIS_AccessManagementPlan_B_250K_20131008.mxd

G:\GIS_Projects\Folder0221-Hydro\11255079_BPHI1_Soils\DD\BPHI1AccessDatabaseTables_2010412.indd

STREAM CROSSINGS									
ID	Easting	Northing	Waterbody Name	Access Notes and Comments	Water Width (m)	Channel Width (m)	Bank Stability (Right Bank)	Bank Stability (Left Bank)	Substrate
38	630075	5489839	Red River	Not assessed at crossing due to access	100	100	50	50	Fines
39	634069	5489067	Marsh River	Not assessed at crossing due to access. Natural, meandering river with large treed riparian areas. Some bare soil on banks.	13		80	60	Fines
40	635431	5489101	Rat River	Not assessed at crossing due to access. Natural, meandering river with large treed riparian areas. Banks appear to be eroding in red hen (exposed soil with trees slumping)	16		70	50	Fines
41	659461	5500722	Youville Drain	Channelized agricultural drain.	6	11	90	90	Fines
42	665026	5507082	Seine River	0.6, 0.8 m high steep banks.	7.8	8.7	100	50	

PROPOSED ACCESS POINTS								
ID	Easting	Northing	Comments	Access Type	Distance to Previous Access Point Along ROW	Distance to Next Access Point Along ROW	Distance to Previous Access Point Along Road	Distance to Next Access Point Along Road
73RT	603095	5497054	PR 332 crossing	Road/ROW	15km	2km	15km	5km
74RT	605175	5496863	PTH 3 crossing	Road/ROW	2km	8.4km	5km	9.5km
75RT	611317	5494327	PR 305 crossing	Road/ROW	8.4km	11km	9.5km	11km
76RT	618304	5490365	PR 330 crossing	Road/ROW	11km	11.7km	11km	16km
77RT	629948	5489973	PTH 75 crossing	Road/ROW	11.7km	1km	16km	6km
78RT	630923	5489549	PR 200 crossing	Road/ROW	1km	15km	6km	19.7km
79RT	645860	5488472	PTH 59 crossing	Road/ROW	15km	9.6km	19.7km	10.2km
80RT	652653	5491562	PR 216 crossing	Road/ROW	9.6km	5.3km	10.2km	5.5km
81RT	657577	5492017	PR 206 crossing	Road/ROW	5.3km	7km	5.5km	7km
82RT	659456	5497031	PR 311 crossing	Road/ROW	7km	8.3km	7km	9km
83RT	659298	5505260	PR 210 crossing	Road/ROW	8.3km	10km	9km	9.7km
84RT	666769	5508317	PR 207 crossing	Road/ROW	10km	1.4km	9.7km	3.5km
85RT	667611	5509274	PTH 1 crossing 2	Road/ROW	1.4km	4.5km	3.5km	6.7km
86RT	667600	5513680	PR 501 crossing	Road/ROW	4.5km	21.3km	6.7km	22km
87RT	654986	5525037	PR 206 crossing	Road/ROW	21.3km	6.6km	22km	7km
88RT	648391	5525077	PR 207 crossing	Road/ROW	6.6km	NA	7km	NA

TRANSMISSION LINE CROSSINGS			
ID	Easting	Northing	T-Line Name
19	605046	5496922	LaVerendrye to Morden
20	605244	5496833	LaVerendrye to Rosenfeld
21	615990	5490316	LaVerendrye to Letellier
22	659550	5493472	St. Vital to Hanover
23	662301	5524241	Slave Falls to Scotland
24	662275	5524265	Ridgeway to Richer
25	661382	5525116	Dorsey to Forbes
26	648274	5525076	Dorsey to Forbes

RAILWAY CROSSINGS			
ID	Easting	Northing	Status
15	605147	5496877	Rail
16	618267	5490363	Rail
17	629163	5490247	Rail
18	641215	5488401	Rail
19	666756	5508284	Rail
20	662529	5524059	Rail

Note: Existing mile road crossings have not been identified for Agro-Manitoba

* Disclaimer: Municipal roads may be used for access as required



38-Red River



39-Marsh River



40-Rat River



41-Youville Drain



42-Seine River