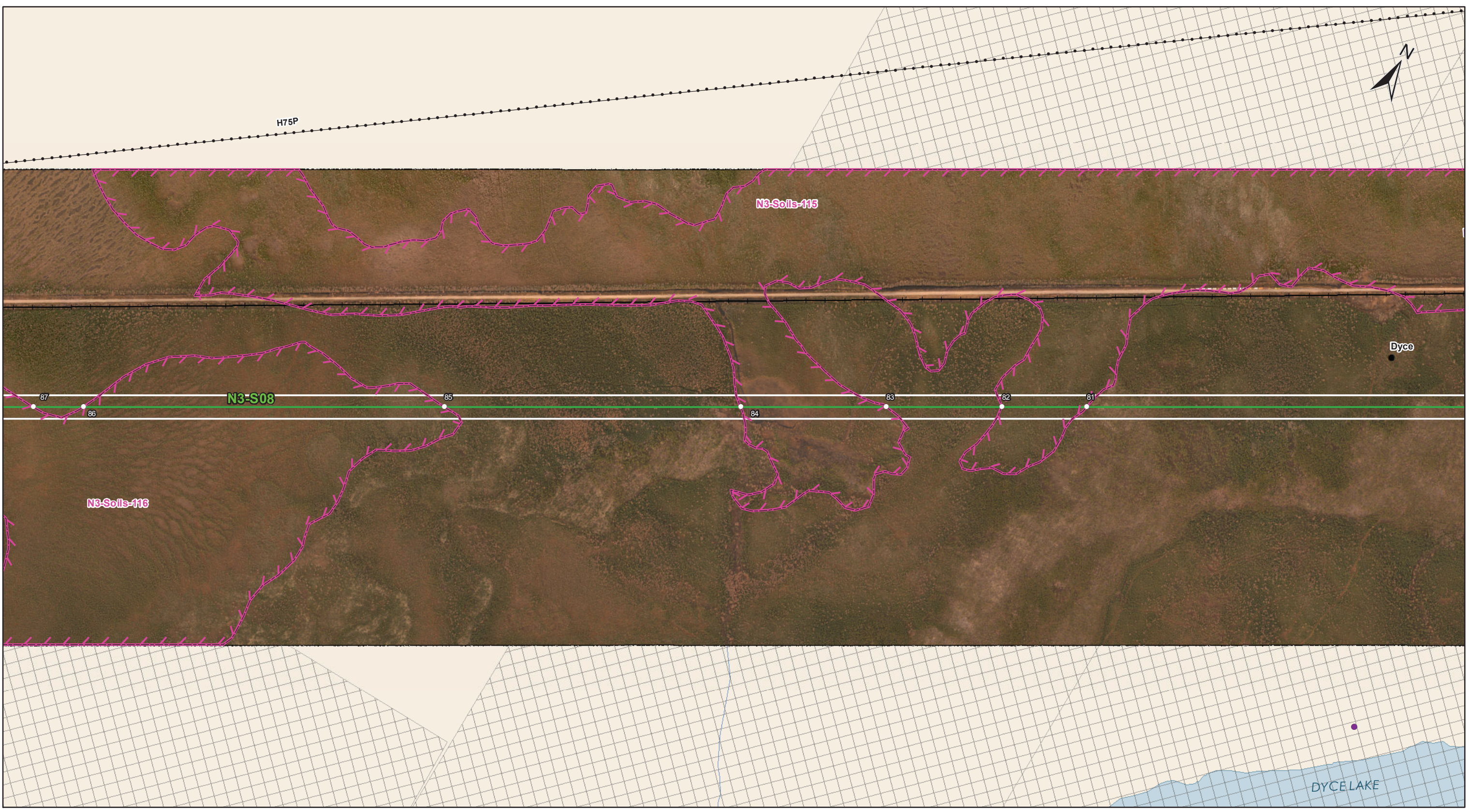


DOCUMENT PATH: G:\GIS\PROJECT_FOLDER\011440054_BPIII_EPPARCMAPIESS_N3\BPIII_CENVPP_NIN2\N3\4C1\SECTIONBASEMAP_MAPBOOK_BTIB_STANTEC_20131128A.MXD



Coordinate System: UTM Zone 14N NAD83
 Data Source: MB Hydro, ProvMB, NRCAN
 Date Created: November 29, 2013

0 125 250 500
 Metres
 1:10,000

- Land Base**
- Transmission Line
 - Highway
 - Major Road
 - Local Road
 - Winter Road
 - Railway (Operational)
 - Railway (Discontinued)
 - Mining
 - Provincial Park

- Project Infrastructure**
- * Angle Tower Locations
 - BPIII Final Preferred Route
 - 66 m Right of Way

- Points of Access***
- Proposed Access Point
 - Major Stream Crossing
 - ▲ Abandoned Rail Crossing
 - ▲ Rail Crossing
 - Transmission Line Crossing
 - Proposed Access Route
- *Labels correspond to BPIII Access Management Database

- ESS Features**
- Heritage**
- Archaeological
- Soils and Terrain**
- Permafrost

**Bipole III Transmission Project
 Construction Environmental Protection Plan
 Construction Section N3
 Environmentally Sensitive Site Locations**

MAP NUMBER : 133

ESS Group : Permafrost

Sec-Seg ID	ESS ID	ESS Name	Location	Start	Stop	UTM Zone	Distance
N3-S08	N3-Soils-115	Permafrost	Site: 81 to 82	E-424200 N-6024491	E-423999 N-6024374	14N	233m
N3-S08	N3-Soils-115	Permafrost	Site: 83 to 84	E-423726 N-6024215	E-423381 N-6024014	14N	399m
N3-S08	N3-Soils-116	Permafrost	Site: 85 to 86	E-422681 N-6023607	E-421827 N-6023110	14N	988 m
N3-S08	N3-Soils-116	Permafrost	Site: 87 to 88	E-421709 N-6023041	E-421346 N-6022830	14N	420m

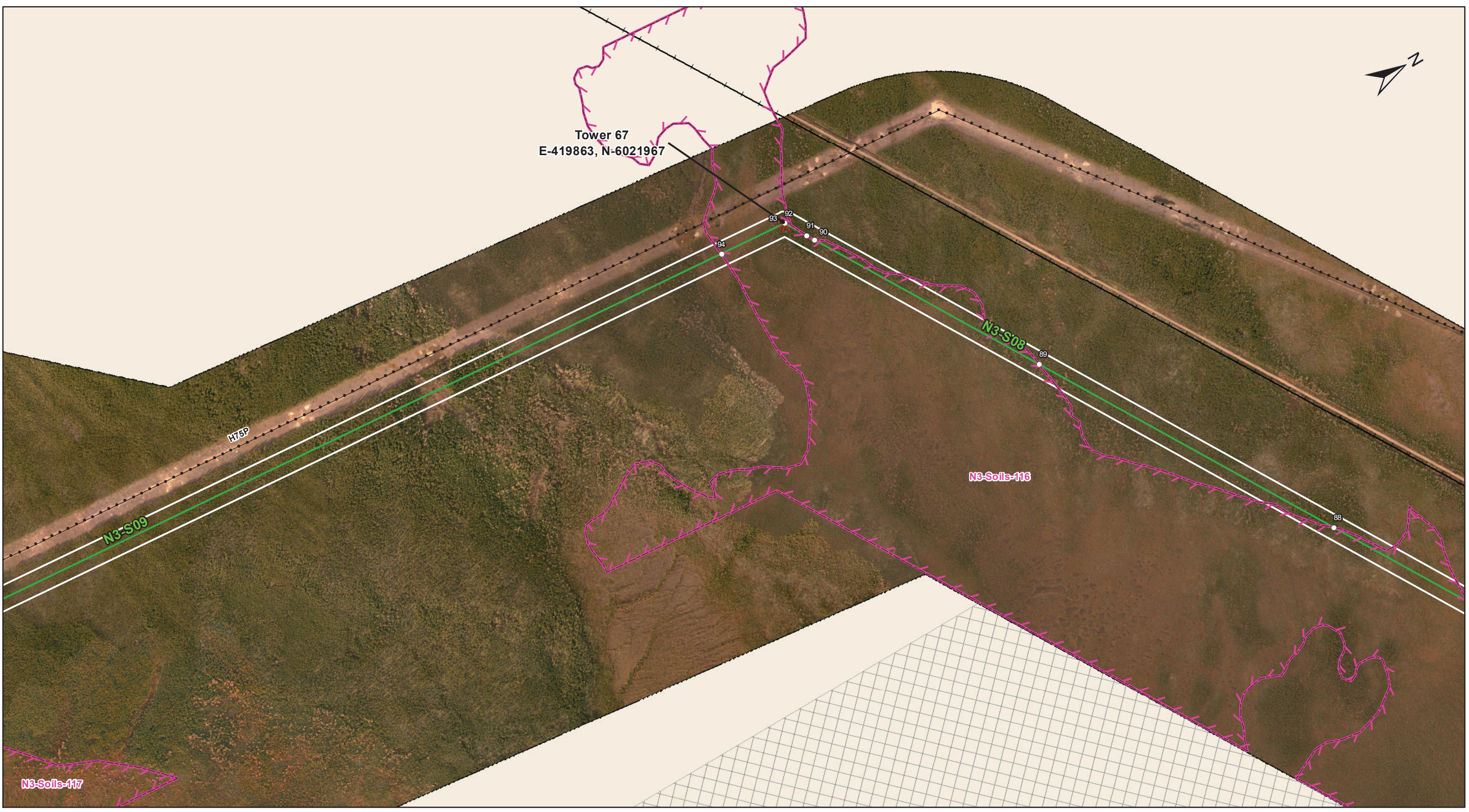
Potential Effects:

Melting or loss of permafrost due to disturbance of the active layer

Specific Mitigation:

- Carry out construction activities on frozen ground to minimize surface damage and rutting
- Use existing trails, roads or cut lines whenever possible as access routes
- Avoid organic soils containing permafrost to the extent possible
- Maintain shrub and herbaceous vegetation to the extent possible
- Remove trees by low-disturbance methods
- Confine vehicle traffic to established trails to the extent possible
- Implement erosion protection before commencing construction in accordance with Erosion/Sediment Control Plan

DOCUMENT PATH: G:_GIS_PROJECT_FOLDER\00_HYDRO\11440054_BPIII_EPP\ARCMAPIESS_N3\BPIII_CENVPP_NIN2\N3\4C1\SECTIONBASEMAP_MAPBOOK_BTIB_STANTEC_20131128A.MXD



Coordinate System: UTM Zone 14N NAD83
 Data Source: MB Hydro, ProvMB, NRCAN
 Date Created: November 29, 2013

0 125 250 500
 Metres
 1:10,000

Land Base

- Transmission Line
- Highway
- Major Road
- Local Road
- Winter Road
- Railway (Operational)
- Railway (Discontinued)
- Mining
- Provincial Park

Project Infrastructure

- Angle Tower Locations
- BPIII Final Preferred Route
- 66 m Right of Way

Points of Access*

- Proposed Access Point
- Major Stream Crossing
- Abandoned Rail Crossing
- Rail Crossing
- Transmission Line Crossing
- Proposed Access Route

*Labels correspond to BPIII Access Management Database

ESS Features

- Soils and Terrain
- Permafrost

**Bipole III Transmission Project
 Construction Environmental Protection Plan
 Construction Section N3
 Environmentally Sensitive Site Locations**

MAP NUMBER : 134

ESS Group : Permafrost

Sec-Seg ID	ESS ID	ESS Name	Location	Start	Stop	UTM Zone	Distance
N3-S08	N3-Soils-116	Permafrost	Site: 87 to 88	E-421709 N-6023041	E-421346 N-6022830	14N	420m
N3-S08	N3-Soils-116	Permafrost	Site: 89 to 90	E-420550 N-6022366	E-419942 N-6022366	14N	703m
N3-S08	N3-Soils-116	Permafrost	Site: 91 to 92	E-419920 N-6022000	E-419863 N-6021967	14N	67m
N3-S09	N3-Soils-116	Permafrost	Site: 93 to 94	E-419863 N-6021967	E-419845 N-6021775	14N	193m

Potential Effects:

Melting or loss of permafrost due to disturbance of the active layer

Specific Mitigation:

- Carry out construction activities on frozen ground to minimize surface damage and rutting
- Use existing trails, roads or cut lines whenever possible as access routes
- Avoid organic soils containing permafrost to the extent possible
- Maintain shrub and herbaceous vegetation to the extent possible
- Remove trees by low-disturbance methods
- Confine vehicle traffic to established trails to the extent possible
- Implement erosion protection before commencing construction in accordance with Erosion/Sediment Control Plan