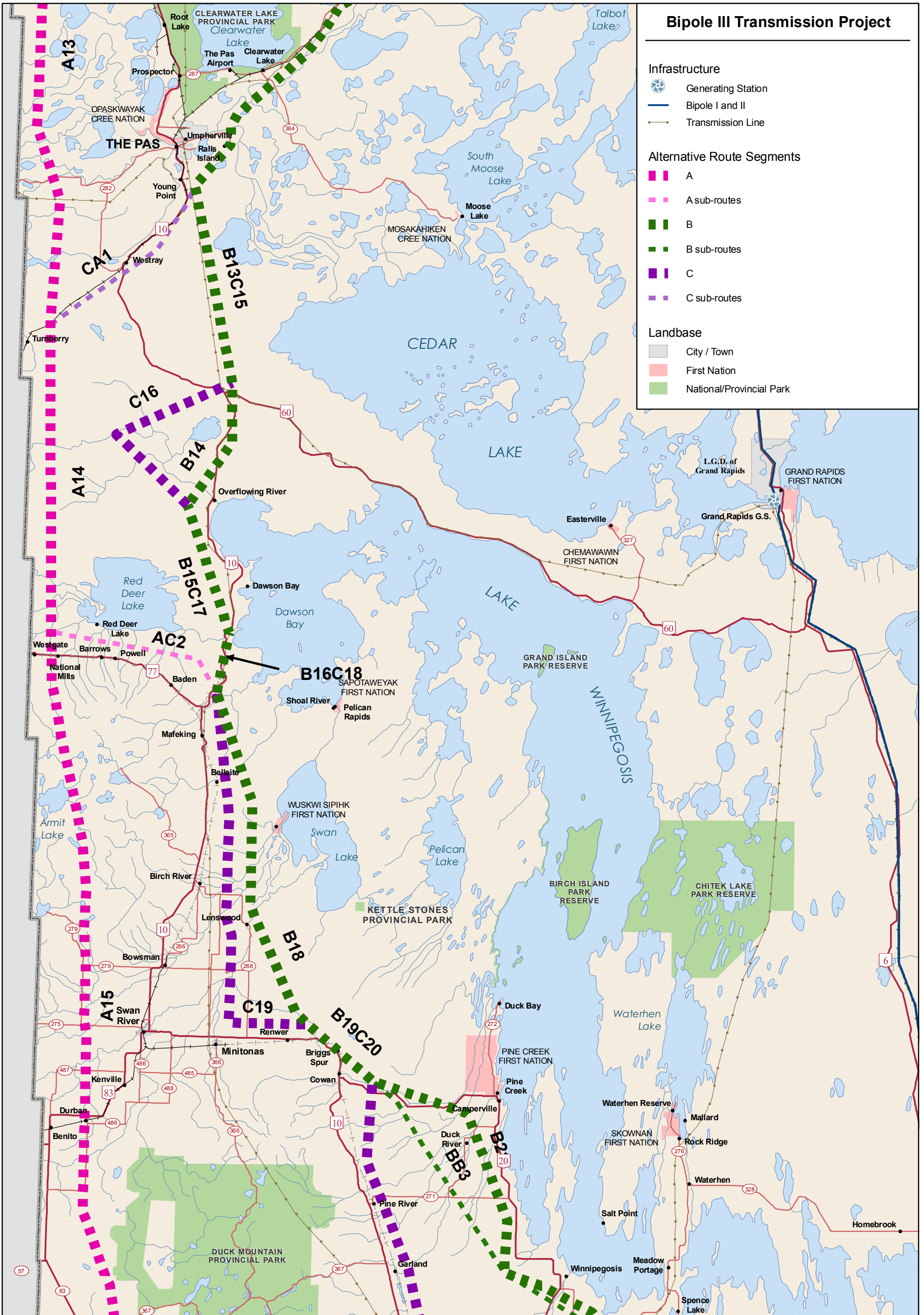
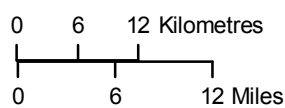


# Bipole III Transmission Project

- Infrastructure**
- Generating Station
  - Bipole I and II
  - Transmission Line
- Alternative Route Segments**
- A
  - A sub-routes
  - B
  - B sub-routes
  - C
  - C sub-routes
- Landbase**
- City / Town
  - First Nation
  - National/Provincial Park

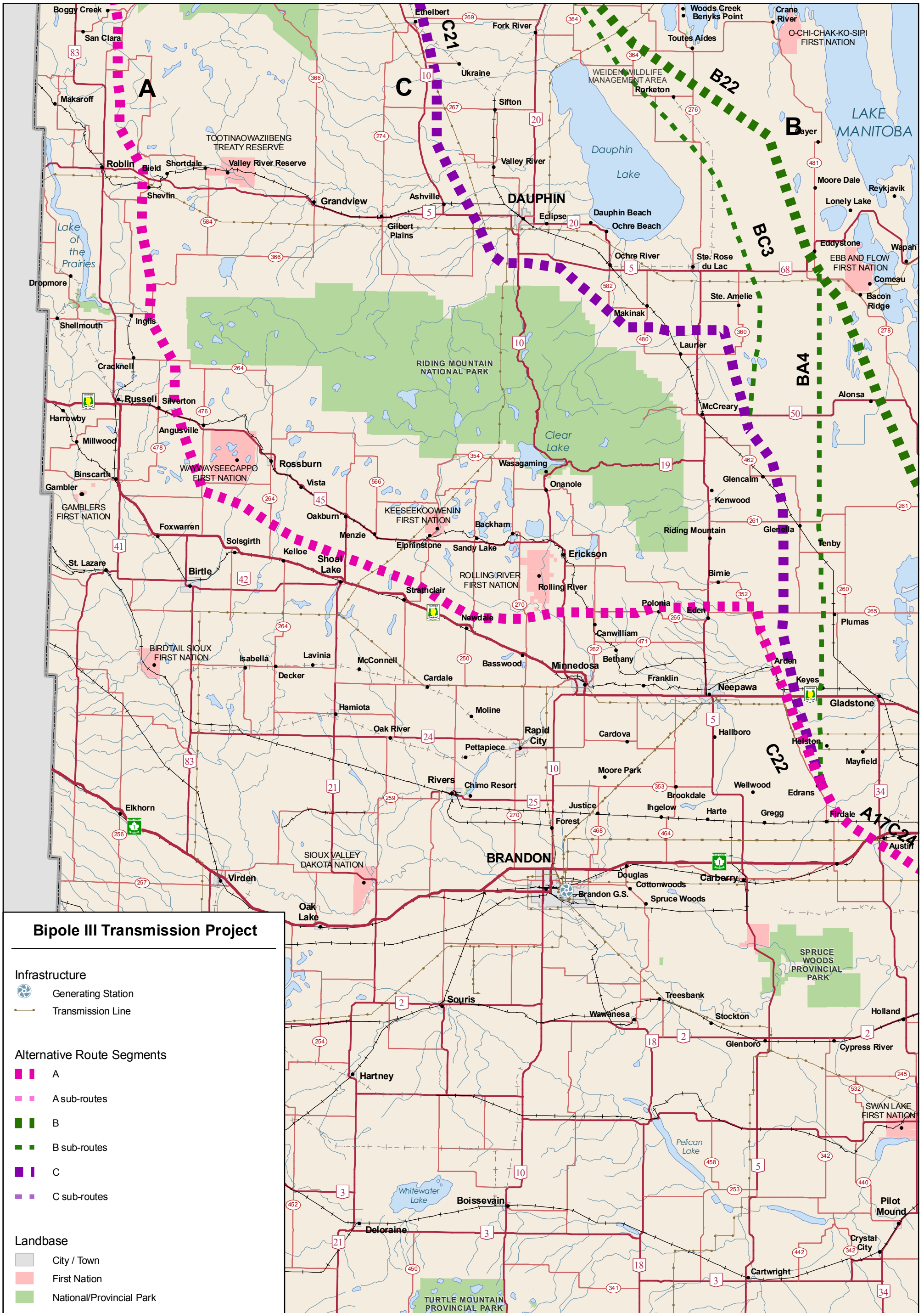


Coordinate System: UTM Zone 14N NAD83  
 Data Source: MB Hydro, MMM, Stantec, ProvMB, NRCAN,  
 Date Created: July 13, 2011

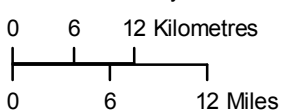


1:750,000

## Alternative Route Segments A, B, C and Crossover Routes



Coordinate System: UTM Zone 14N NAD83  
 Data Source: MB Hydro, MMM, Stantec, ProvMB, NRCAN,  
 Date Created: July 13, 2011



1:750,000

## Alternative Route Segments A, B, C and Crossover Routes

# Bipole III Transmission Project

## Project Infrastructure

◆ Converter Station

## Infrastructure

◆ Converter Station

⊙ Generating Station

— Bipole I and II

— Transmission Line

## Alternative Route Segments

█ A

█ A sub-routes

█ B

█ B sub-routes

█ C

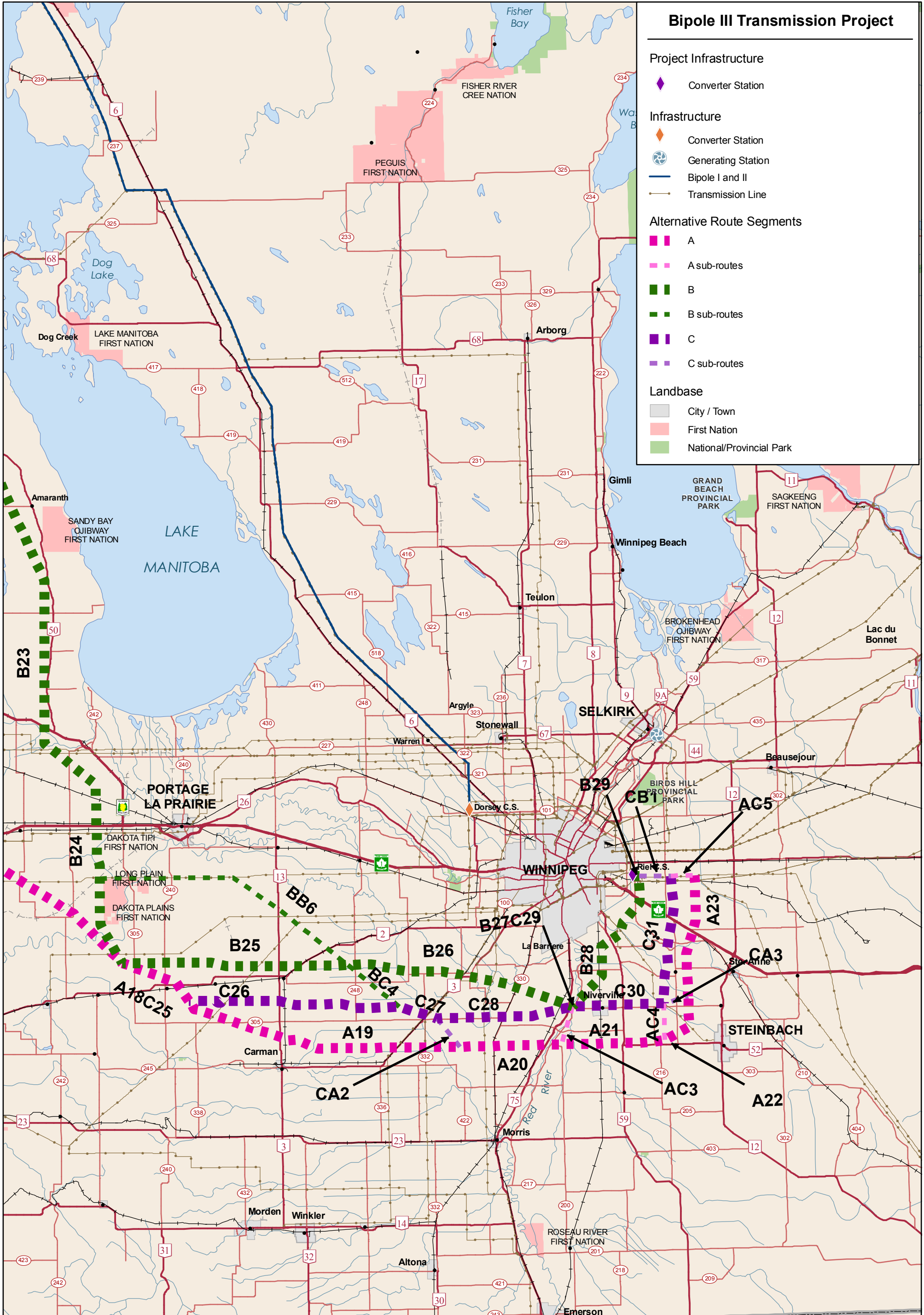
█ C sub-routes

## Landbase

■ City / Town

■ First Nation

■ National/Provincial Park



Coordinate System: UTM Zone 14N NAD83  
 Data Source: MB Hydro, MMM, Stantec, ProvMB, NRCAN,  
 Date Created: July 13, 2011

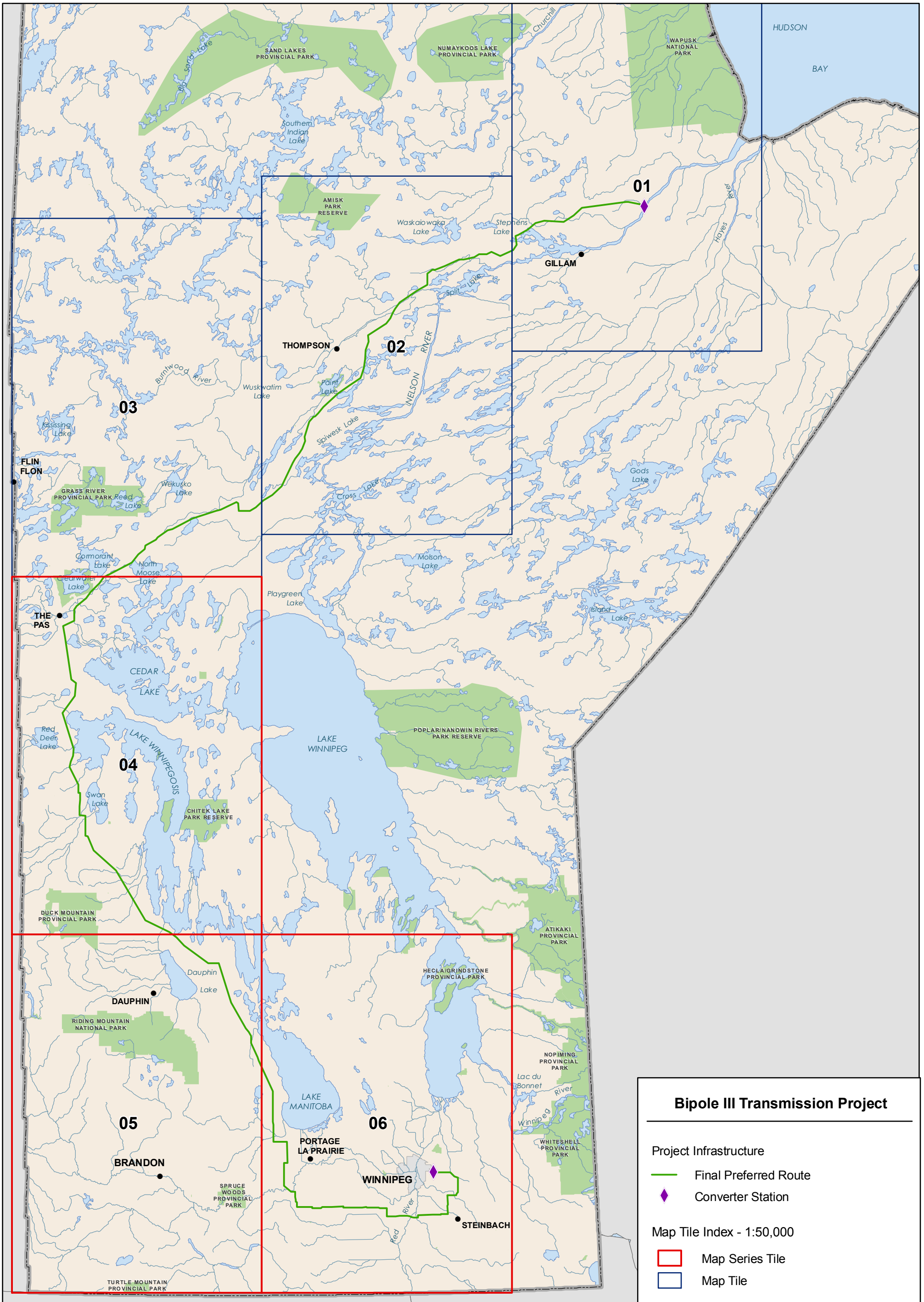
0 6 12 Kilometres

0 6 12 Miles

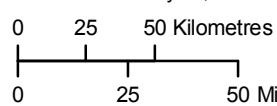


1:750,000

## Alternative Route Segments A, B, C and Crossover Routes



Coordinate System: UTM Zone 14N NAD83  
 Data Source: MB Hydro, MMM, Stantec, ProvMB  
 Date Created: July 20, 2011



1:2,750,000



**Index of Map Series 300**  
**Alternative Route Segments**  
**A, B, C, and Crossover Routes**