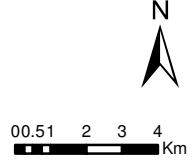




- Legend**
- Preferred Shoreline Route
 - Rice River Road Upgrade
 - Summer Ferry
 - Paved Highway
 - Transmission Line
 - Un-Paved Road
 - Un-Paved Highway
 - - - Winter/Limited Use Road

- Community
- First Nation
- NAC Community
- Study Area
- Provincial Boundary

- Watercourse
- String Bog
- Forested
- Wetland
- Lake
- + Watercourse Crossing



**EAST SIDE TRANSPORTATION INITIATIVE:
PROVINCIAL ROAD 304 TO BERENS RIVER
ALL- SEASON ROAD**

**Watercourse Crossings:
Berens River to Bloodvein River**

Date: October 2009 | File Number: 333144 | Sub Code: MBR

Figure Number: **7-15** | Rev. 1

Note: This map is intended for illustrative purposes only. Do not rely on this map for legal administrative purposes, or as a precise indicator of routes, locations of features, or as a precise indicator of routes, locations of features. Sources: Digitized Promises To Keep, East Side Planning Initiative (ESPI), 2004 / National Topographic Data Base (NTDB) 1:50,000, Government of Canada, Natural Resources Canada, Centre for Topographic Information 2003 / Manitoba Land Information (MLI) 2000. Projection: Canada_Lambert_Conformal_Conic (GCS, North American, 1983)

