



Randi Cyr
Manager, Operations Compliance
Environmental, Health & Safety
randi.cyr@cpsagu.ca

October 26, 2015

Krystal Penner
Manitoba Conservation and Water Stewardship
123 Main Street, Suite 160
Winnipeg MB R3C 1A5

Re: Notice of Alteration – Fisher Branch, MB – License 1960 RR

Dear Krystal,

Further to the notice of alteration submitted to your attention on April 22, 2015, this letter is to request constructional approval for the Crop Production Services (Canada) Inc. Fisher Branch, Manitoba facility, located on the SE ¼ of 25-24-2 WPM in the Rural Municipality of Fisher.

This application includes:

- A hard copy of the new license proposal, and
- CPS site plan drawing.

The target date of construction for this project is October 31, 2015. Please contact me to indicate if you will not be able to review and approve this application in time for this deadline.

If you have any questions regarding this notice of alteration request please direct any questions to myself.

Sincerely,

A handwritten signature in blue ink that reads "Randi Cyr".

Randi Cyr
Manager, Operations Compliance
Crop Production Services (Canada) Inc.

Crop Production Services (Canada) Inc.
Fisher Branch, MB

Site Information

This property is located on the SE ¼ of 25-24-2 WPM in the Rural Municipality of Fisher and is currently owned by Crop Production Services (Canada) Inc (CPSC).

Changes Within the Development

This Notice of Alteration is to request constructional approval to increase the current concrete outload pad for the dry fertilizer plant to 16' x 20'. In addition, we will also be constructing a 8' x 20' concrete pad underneath the outload conveyor.

The current plans are for construction to commence on October 31, 2015.

Maps, Drawings, Site Plans, etc.

A site plan showing the additions in red has been attached for Manitoba Conservation's files.

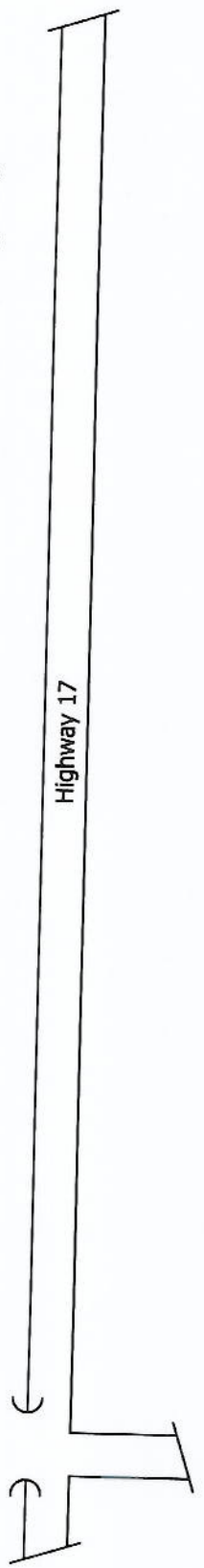
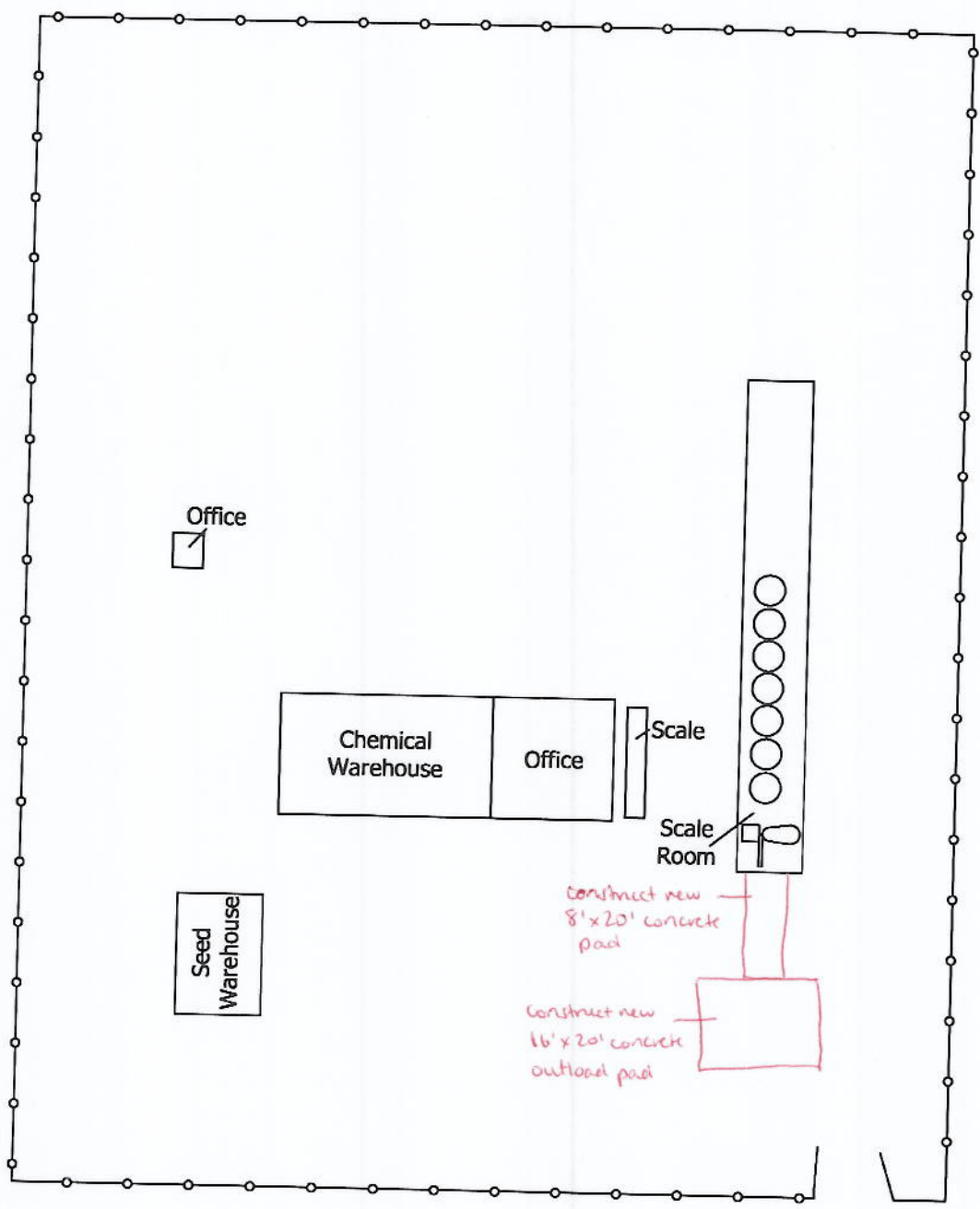
Identification and Quantification of Changes to the Type or Quantity of Raw Materials or Substances Used or Processed

No changes to the type or quantity of product stored and distributed will take place with this alteration.

Quantification of Change in the Environmental Effects as a Result of the Alteration

No significant changes in the environmental effects are anticipated from the alteration of this development.

Lat: 51.097833 Long: -97.604666



Crop Production Services
1 Mile North on Highway 17
Fisher Branch, MB R0C 020
204-372-6600

Revised:

03/25/15



Code:

46000