

### SELKIRK GENERATING STATION Ash Lagoon Observation Wells (Nickel)

The MWQSOG (160) and  
CCME CEQG (150) Limits  
are in excess of the  
chart concentrations

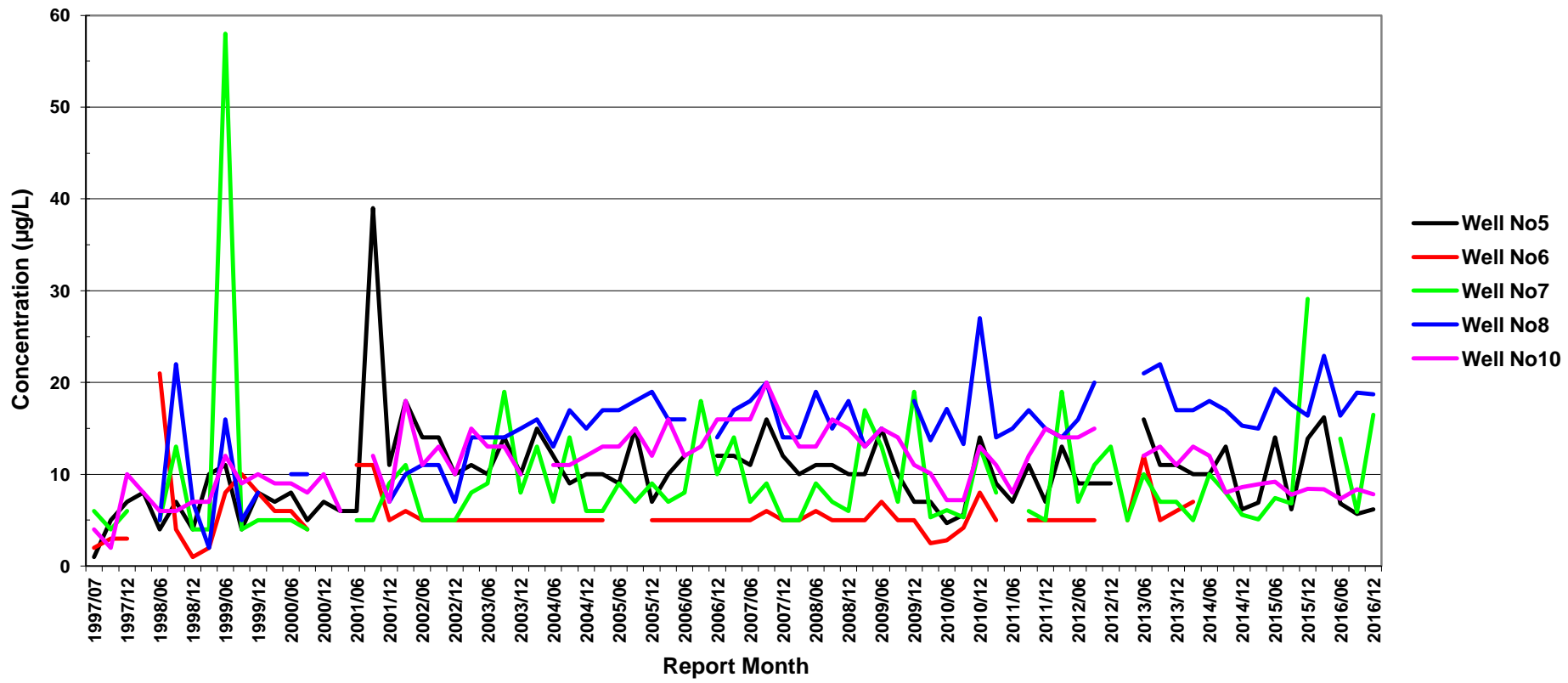


Figure 3A: Nickel concentration variation over the entire monitoring record of the Selkirk GS ash lagoon groundwater observation wells.  
Note - the CCME and MWQSOG numerical limits are intended for surface water concentrations and shown for comparison only.

### SELKIRK GENERATING STATION Coal Pile Observation Wells (Nickel)

The MWQSOG (160) and  
CCME CEQG (150) Limits  
are in excess of the  
chart concentrations

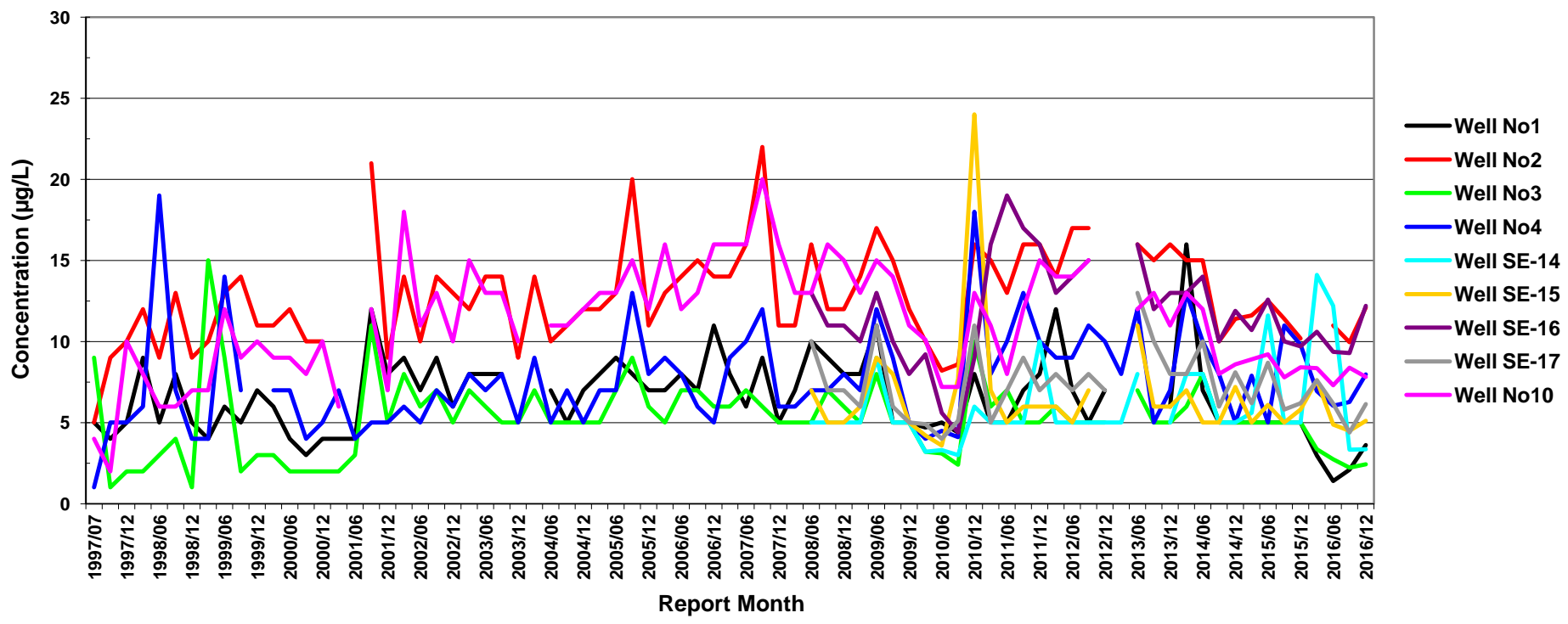


Figure 3B: Nickel concentration variation over the entire monitoring record of the Selkirk GS coal pile groundwater observation wells.  
Note - the CCME and MWQSOG numerical limits are intended for surface water concentrations and shown for comparison only.