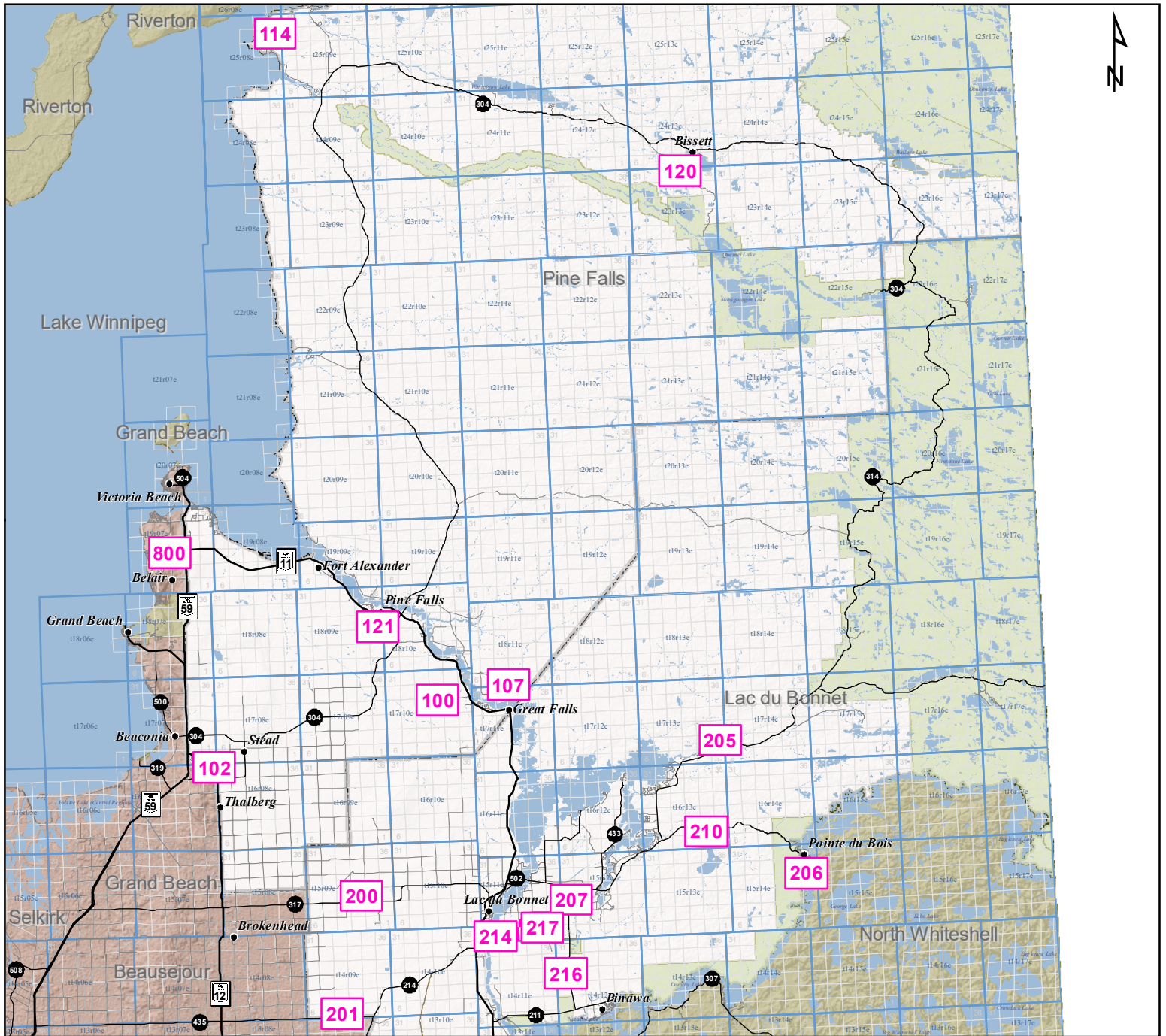
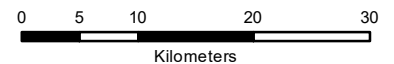


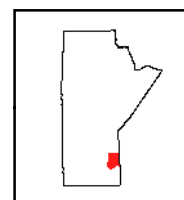
- LAC DU BONNET & PINE FALLS - Designated Cutting Areas

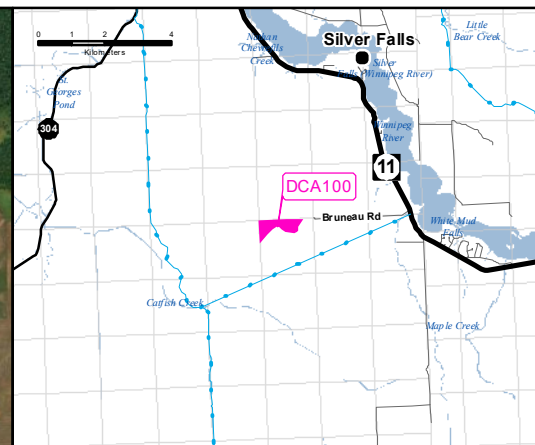
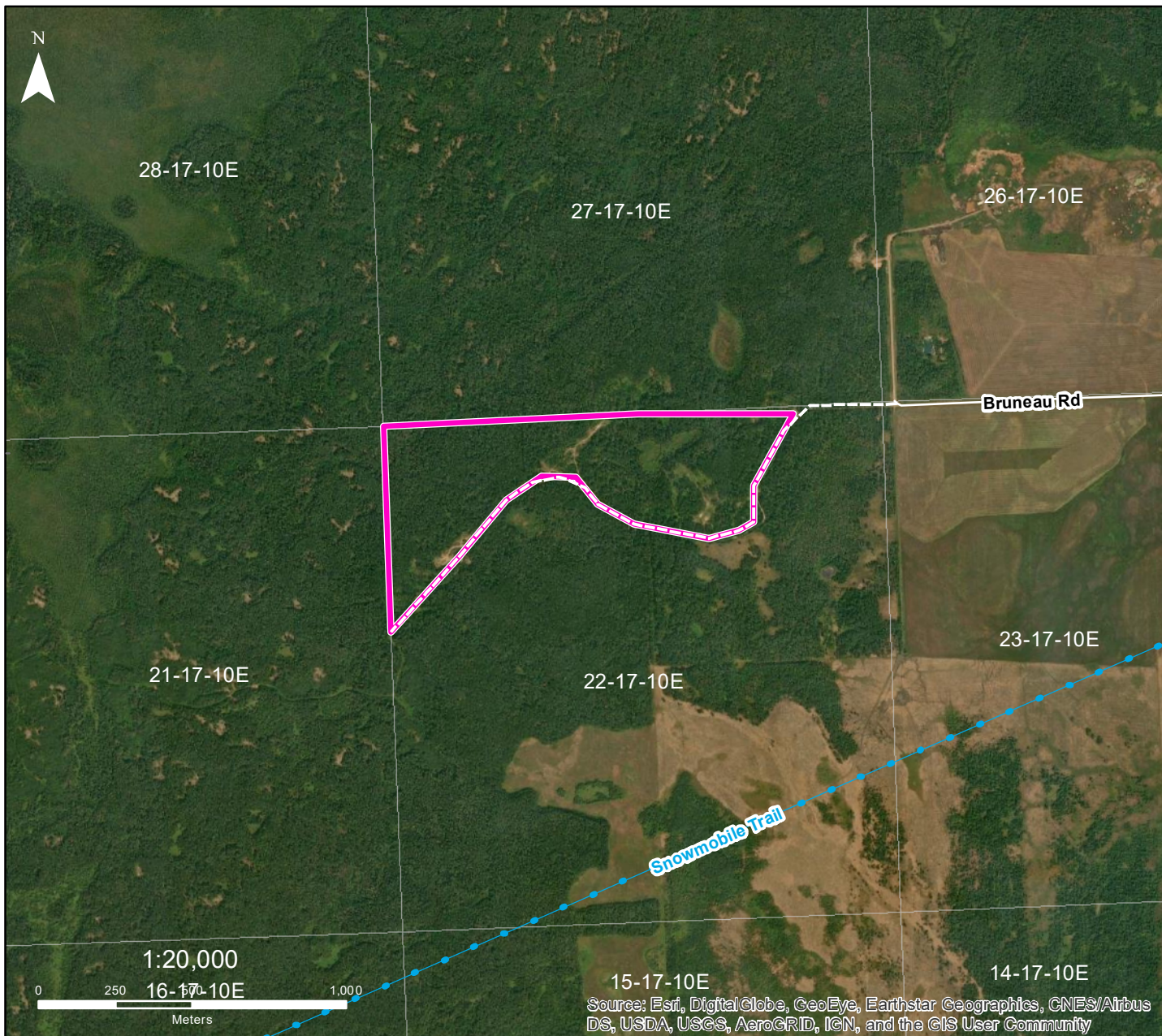


DISTRICT	DCA ID	PRODUCT (FW = Fuelwood, PR = Post & Rail, XMAS = Christmas Trees/Boughs)	SEASON	ACCESS CONDITION	SUGGESTION	SEC-TWP-RGE
Pine Falls	100	Birch, Poplar (FW)	Summer/Winter	Good/Poor	Truck/Snowmobile	22-17-10E
	102	Poplar, Jack Pine (FW)	Summer/Winter	Good/Poor	Truck/Snowmobile	36-16-07E
	107	Poplar, Ash, Balsam Fir (FW, XMAS)	All	Poor	Machine	4-18-11E
	114	Jack Pine, Birch, Poplar (FW)	Summer/Winter	Good	Truck/Snowmobile	25-25-08E
	120	Poplar, Jack Pine, Tamarack (FW)	Summer/Winter	Good/Fair	ATV/Snowmobile	34-23-13E
	121	Tamarack, White Birch, Ash	All	Fair	ATV/Snowmobile	19-18-10E
Lac Du Bonnet	200	Black Spruce, Poplar, Jack Pine (FW)	Summer/Winter	Poor	Machine	15-15-09E
	201	Black Spruce, Tamarack, Poplar (FW)	Winter	Poor	Machine	4-14-09E
	205	Poplar, Balsam Fir (FW)	Summer/Winter	Fair/Poor	Machine	12-17-13E
	206	Jack pine, Poplar (FW)	Summer/Winter	Fair/Poor	ATV/Snowmobile	25-15-14E
	207	Poplar, Tamarack, Black Spruce (FW)	Winter	Fair	Machine	18-15-12E
	210	Tamarack, Black Spruce, Jack Pine (FW)	Summer	Fair	Truck/ATV	11-16-13E
	214	Black Spruce, Tamarack (FW)	Winter Frost	Poor	Machine	4-15-11E
	216	Poplar, Black Spruce, Balsam Fir (FW, XMAS)	Summer/Winter	Fair	Machine	19-14-12E
Selkirk	217	Poplar (FW)	Summer/Winter	Good/Fair	Machine	10-15-11E
	800	Poplar, Oak (FW)	Summer/Winter	Fair	Truck/Snowmobile	16-19-07E



Designated Cutting Area





DESIGNATED CUTTING AREA 100

Pine Falls

- FMU 24 -

Sec 22 - Twp 17 - Rge 10 E

 Cutting Area

Location:

From Great Falls, travel northwest on Hwy 11 for 5 km to Bruneau Road. Travel west on Bruneau Road for 3 km.

General Instructions:

Any species (excluding Elm), green or dry, can be removed from the harvest areas. White Birch has a maximum harvest limit of 5m³

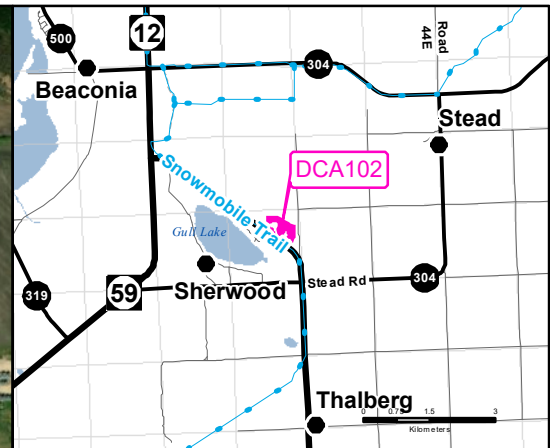
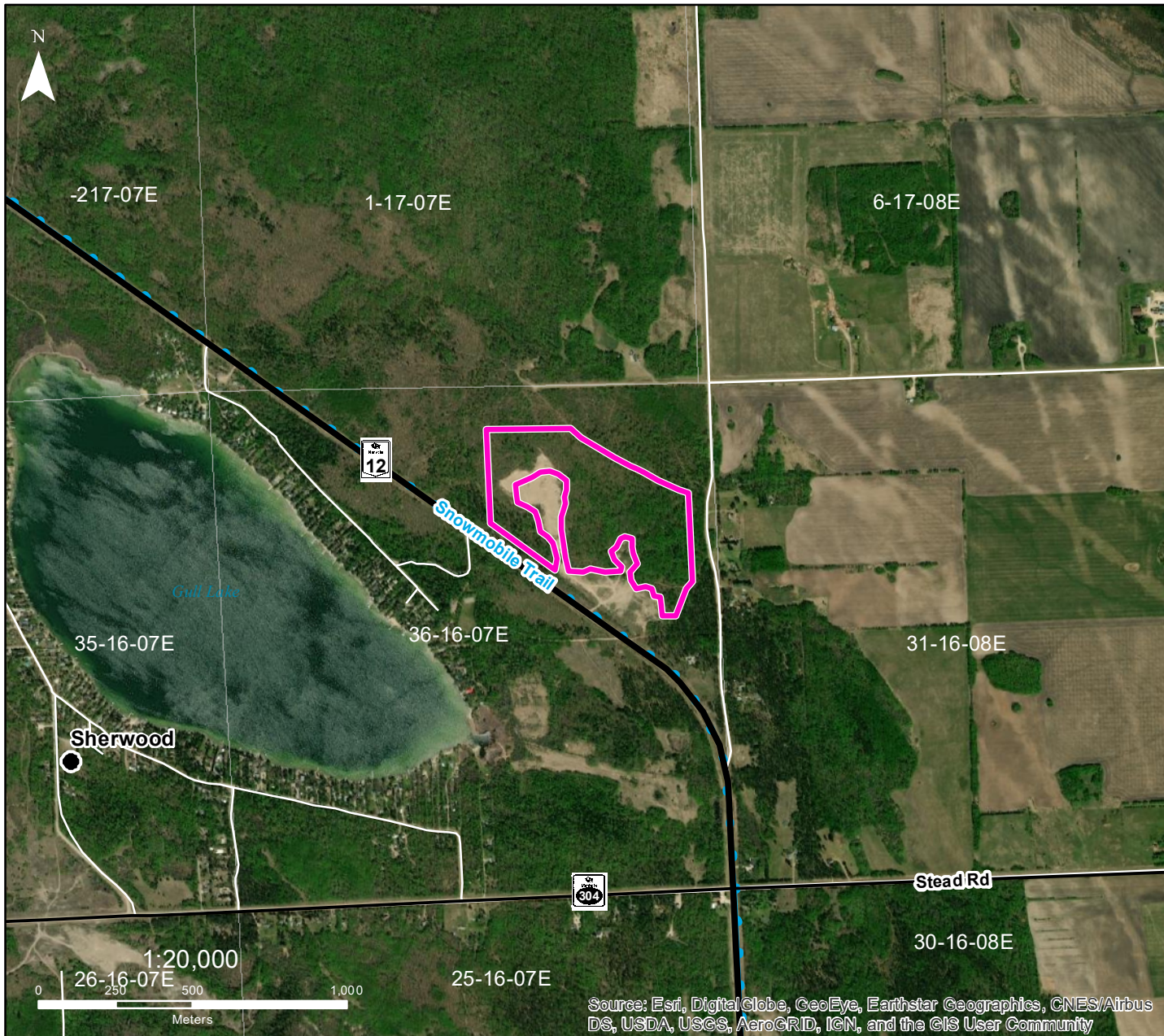
INFO: Harvesting area is on north side of trail only.

NAD1983 UTM ZONE 14N

Forestry Branch
Agriculture and Resource Development

Source: Esri, DigitalGlobe, GeoEye, Earthstar Geographics, CNES/Airbus DS, USDA, USGS, AeroGRID, IGN, and the GIS User Community

Dominant Species	Product	Species Condition	Season	Access Condition	Suggestion
White Birch 70%	Fuel Wood	Green	Summer/Winter	Good/Poor	Truck/Snowmobile
Trembling Aspen 30%	Fuel Wood	Green	Summer/Winter	Good/Poor	Truck/Snowmobile



DESIGNATED CUTTING AREA 102

Pine Falls

- FMU 24 -

Sec 36 - Twp 16 - Rge 7E

 Cutting Area

Location:

From jct of Hwy 12 & Stead Road, travel north on Hwy 12 for 1 km to trail (entrance to gravel pit). Travel northeast through pit for 150 m.

General Instructions:

Any species (excluding Elm), green or dry, can be removed from the harvest areas. White Birch has a maximum harvest limit of 5m3

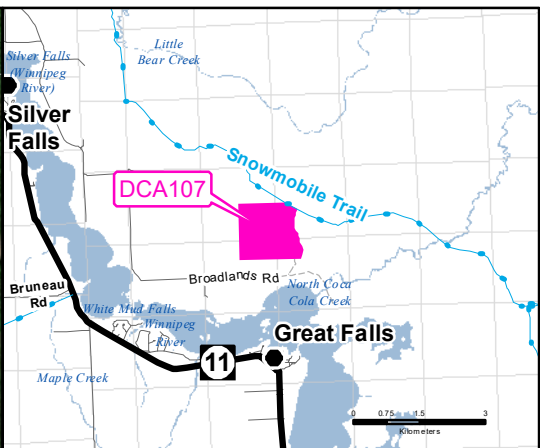
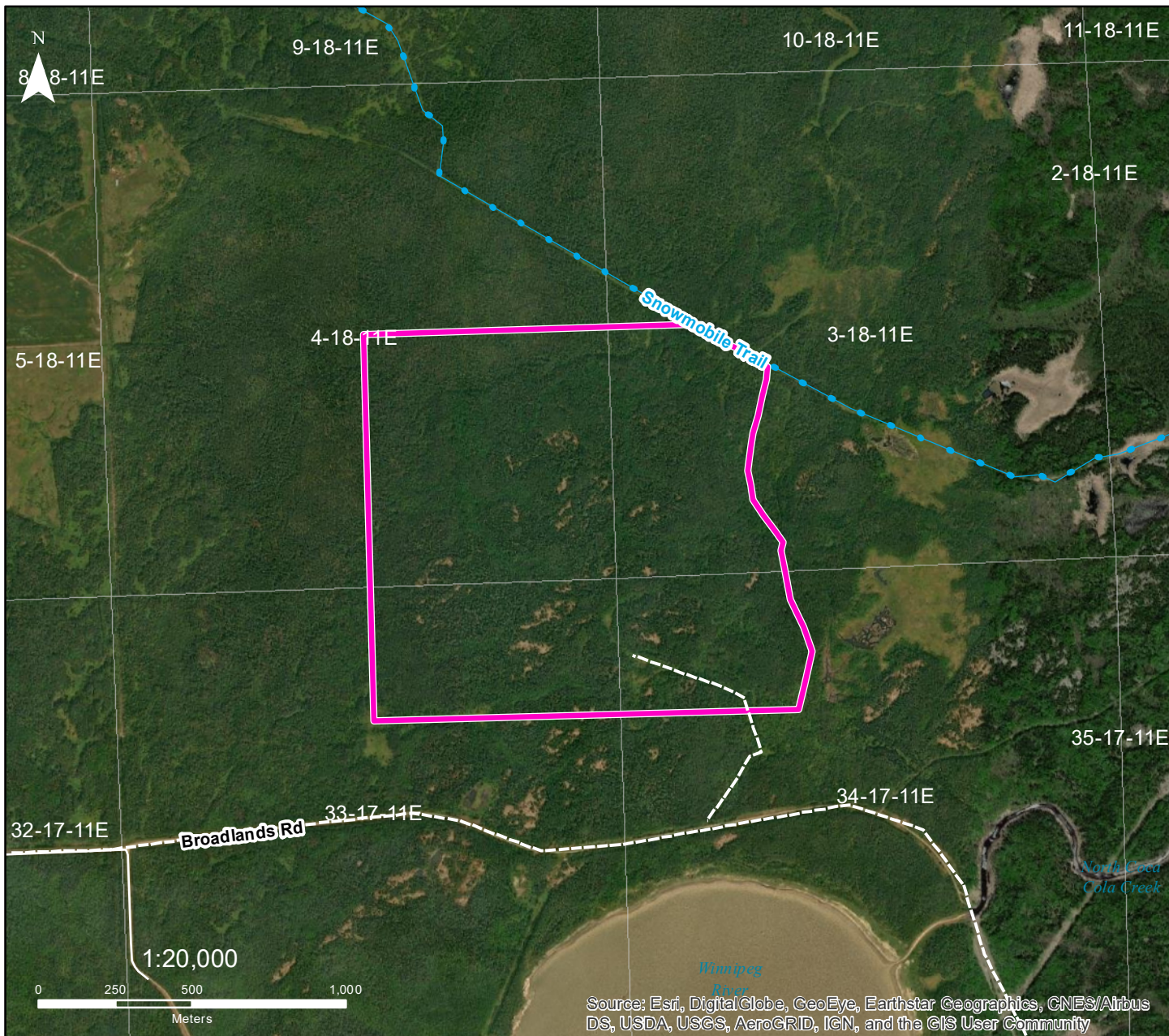
INFO: CAUTION. Active quarry site.

NAD1983 UTM ZONE 14N

Forestry Branch
Agriculture and Resource Development

Source: Esri, DigitalGlobe, GeoEye, Earthstar Geographics, CNES/Airbus DS, USDA, USGS, AeroGRID, IGN, and the GIS User Community

Dominant Species	Product	Species Condition	Season	Access Condition	Suggestion
Trembling Aspen 50%	Fuel Wood	Green	Summer/Winter	Good/Poor	Truck/Snowmobile
Jack Pine 30%	Fuel Wood	Green	Summer/Winter	Good/Poor	Truck/Snowmobile
White Birch & Oak 20%	Fuel Wood	Green	Summer/Winter	Good/Poor	Truck/Snowmobile



DESIGNATED CUTTING AREA 107

Pine Falls
- FMU 24 -

Sec 4 - Twp 18 - Rge 11E

 Cutting Area

Location:

From jct of Hwy 304 & Broadlands Road, travel south for 19.6 km.

General Instructions:

Any species (excluding Elm), green or dry, can be removed from the harvest areas. White Birch has a maximum harvest limit of 5m³

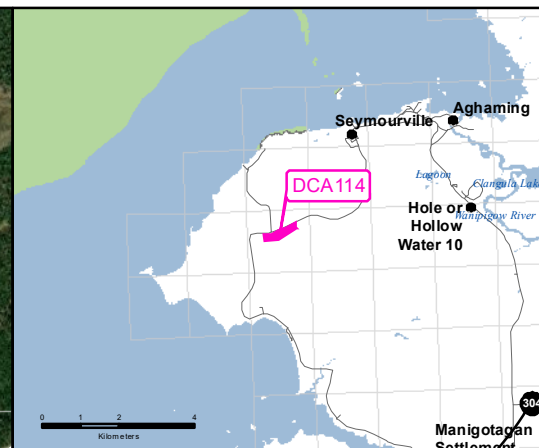
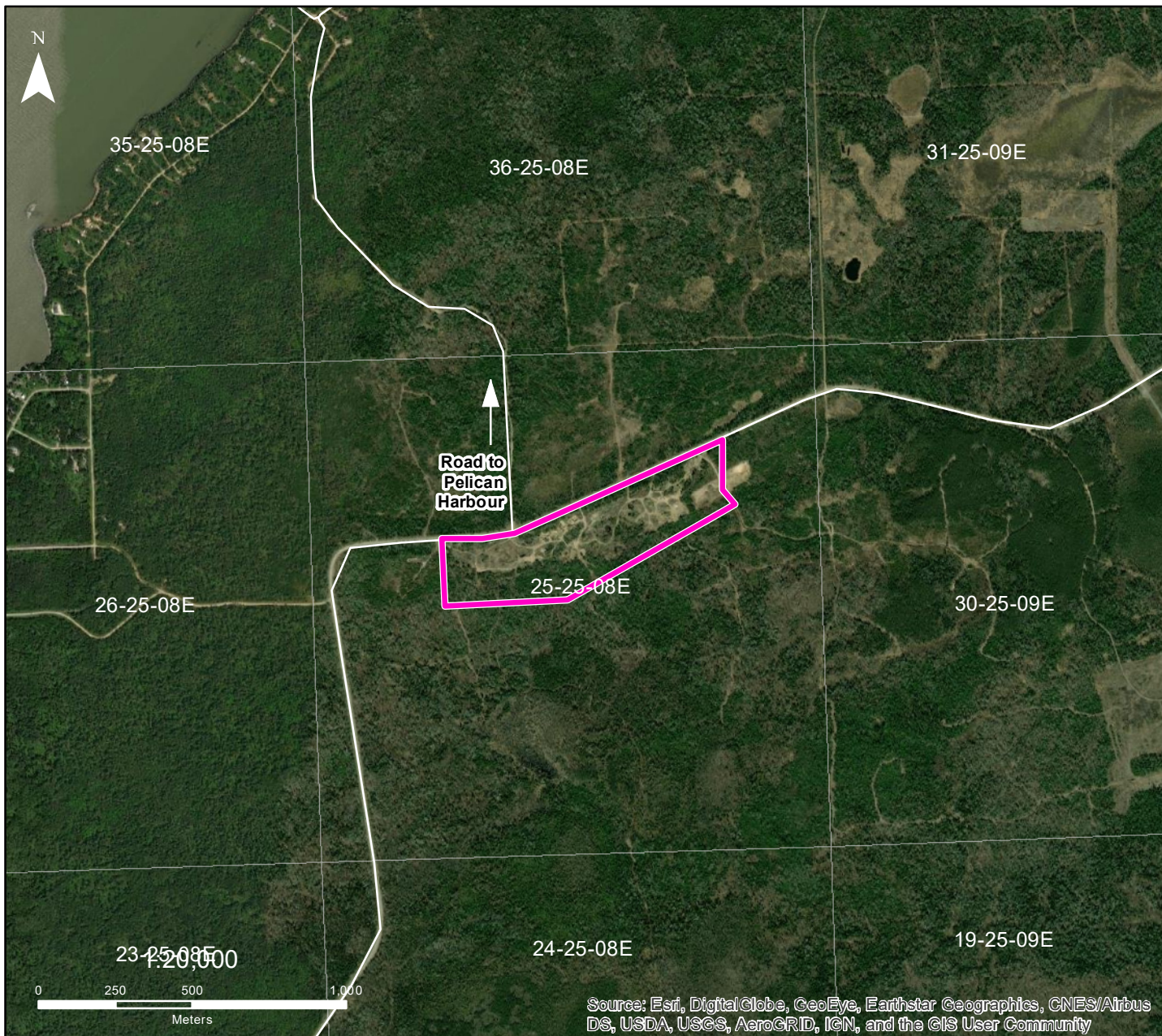
INFO: No harvesting off of Broadlands Road. Stay within boundary. No rutting or damage to walking trail.

NAD1983 UTM ZONE 14N

Forestry Branch
Agriculture and Resource Development

Source: Esri, DigitalGlobe, GeoEye, Earthstar Geographics, CNES/Airbus DS, USDA, USGS, AeroGRID, IGN, and the GIS User Community

Dominant Species	Product	Species Condition	Season	Access Condition	Suggestion
Trembling Aspen 70%	Fuel Wood	Green	All	Poor	Machine
Green Ash 20%	Fuel Wood	Green	All	Poor	Machine
Balsam Fir & Black Spruce 10%	Christmas Tree	Green	All	Poor	Machine



DESIGNATED CUTTING AREA 114

Pine Falls

- FMU 24 -

Sec 25 - Twp 25 - Rge 8E

 Cutting Area

Location:

From the town of Seymourville, travel south on road to Manigotagan for 5 km / From Manigotagan, travel north on road to Seymourville for approx. 17km.

General Instructions:

Any species (excluding Elm), green or dry, can be removed from the harvest areas. White Birch has a maximum harvest limit of 5m3

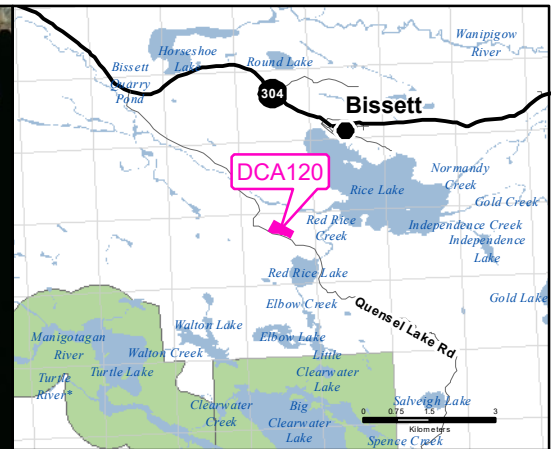
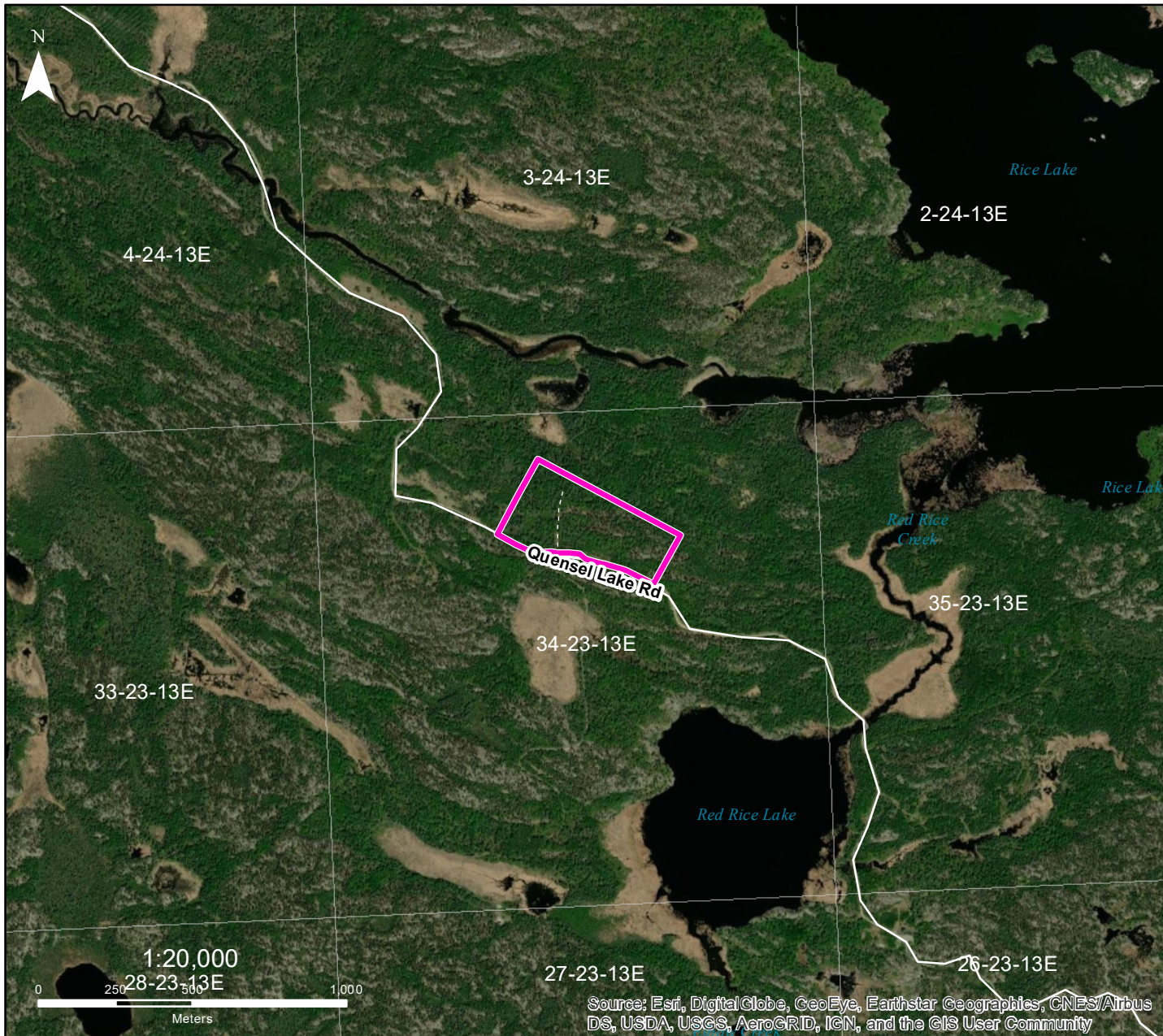
INFO: Please cut wood from where gravel is being dug or take from debris piles first.

NAD1983 UTM ZONE 14N

Forestry Branch
Agriculture and Resource Development

Source: Esri, DigitalGlobe, GeoEye, Earthstar Geographics, CNES/Airbus DS, USDA, USGS, AeroGRID, IGN, and the GIS User Community

Dominant Species	Product	Species Condition	Season	Access Condition	Suggestion
Jack Pine 70%	Fuel Wood	Green	Summer/Winter	Good	Truck/Snowmobile
White Birch 20%	Fuel Wood	Green	Summer/Winter	Good	Truck/Snowmobile
Trembling Aspen 10%	Fuel Wood	Green	Summer/Winter	Good	Truck/Snowmobile



DESIGNATED CUTTING AREA 120

Pine Falls

- FMU 31 -

Sec 34 - Twp 23 - Rge 13E

 Cutting Area

Location:

Approx. 5km south on Quensel Lake Rd. from P.R. #304 west of Bissett. North side of Quensel Lake Rd.

General Instructions:

Any species (excluding Elm), green or dry, can be removed from the harvest areas. White Birch has a maximum harvest limit of 5m3

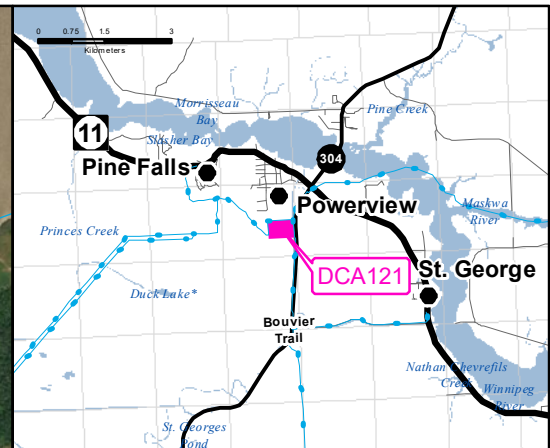
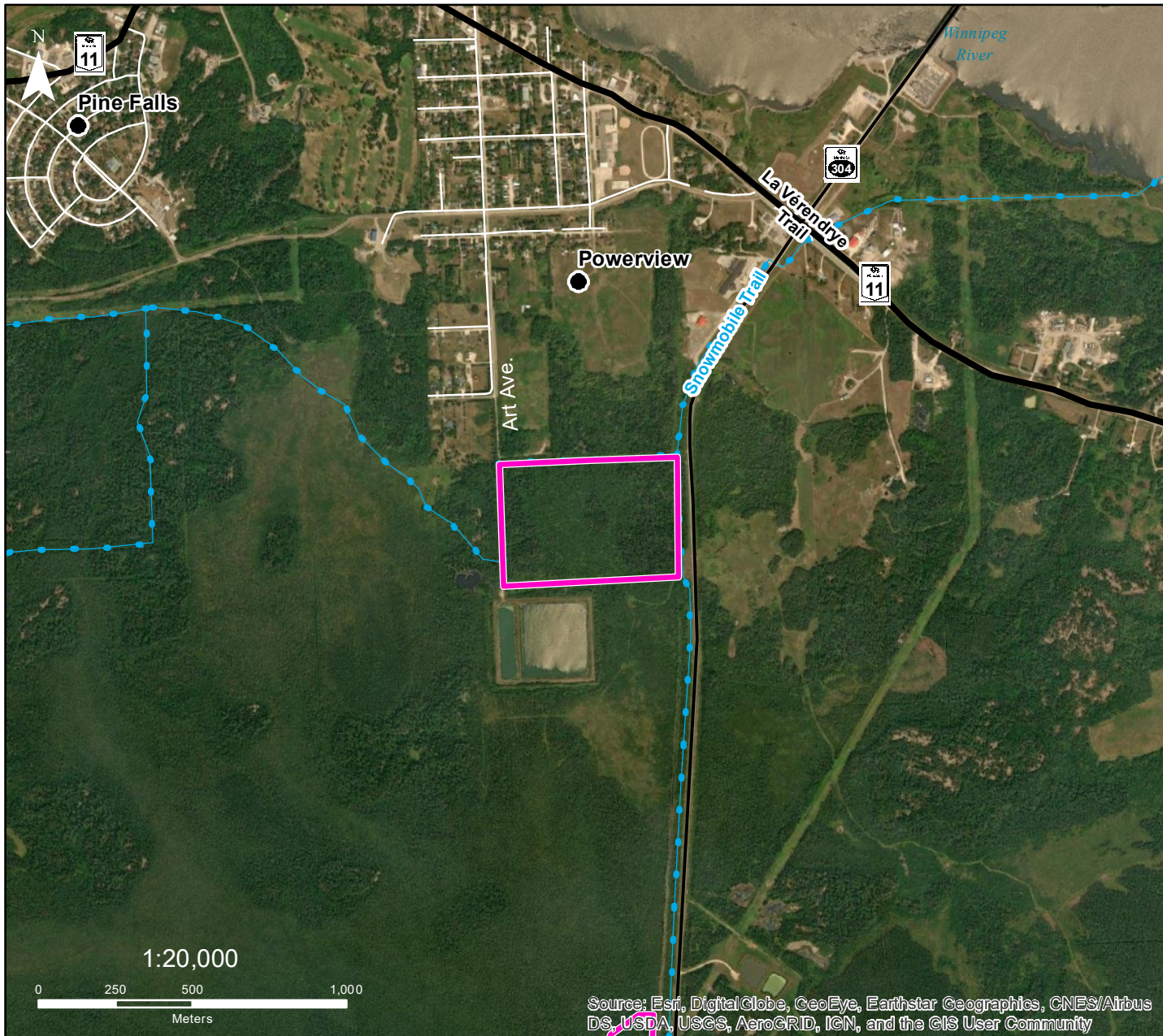
INFO: Do Not leave branches or debris on access trail of road.

NAD1983 UTM ZONE 14N

Forestry Branch
Agriculture and Resource Development

Source: Esri, DigitalGlobe, GeoEye, Earthstar Geographics, CNES/Airbus DS, USDA, USGS, AeroGRID, IGN, and the GIS User Community

Dominant Species	Product	Species Condition	Season	Access Condition	Suggestion
Trembling Aspen 70%	Fuel Wood	Green	Summer/Winter	Good/Fair	ATV/Snowmobile
Jack Pine 20%	Fuel Wood	Green	Summer/Winter	Good/Fair	ATV/Snowmobile
Tamarack 10%	Fuel Wood	Green	Winter	Fair	ATV/Snowmobile



DESIGNATED CUTTING AREA 121

Pine Falls

- FMU 24 -

Sec 19 - Twp 18 - Rge 10E

 Cutting Area

Location:

From the junction of PTH 11 and Art Ave. in Powerview-Pine Falls head south on Art Ave. for 1.4km

General Instructions:

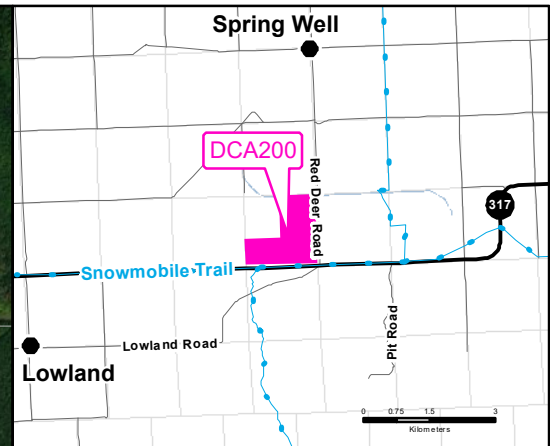
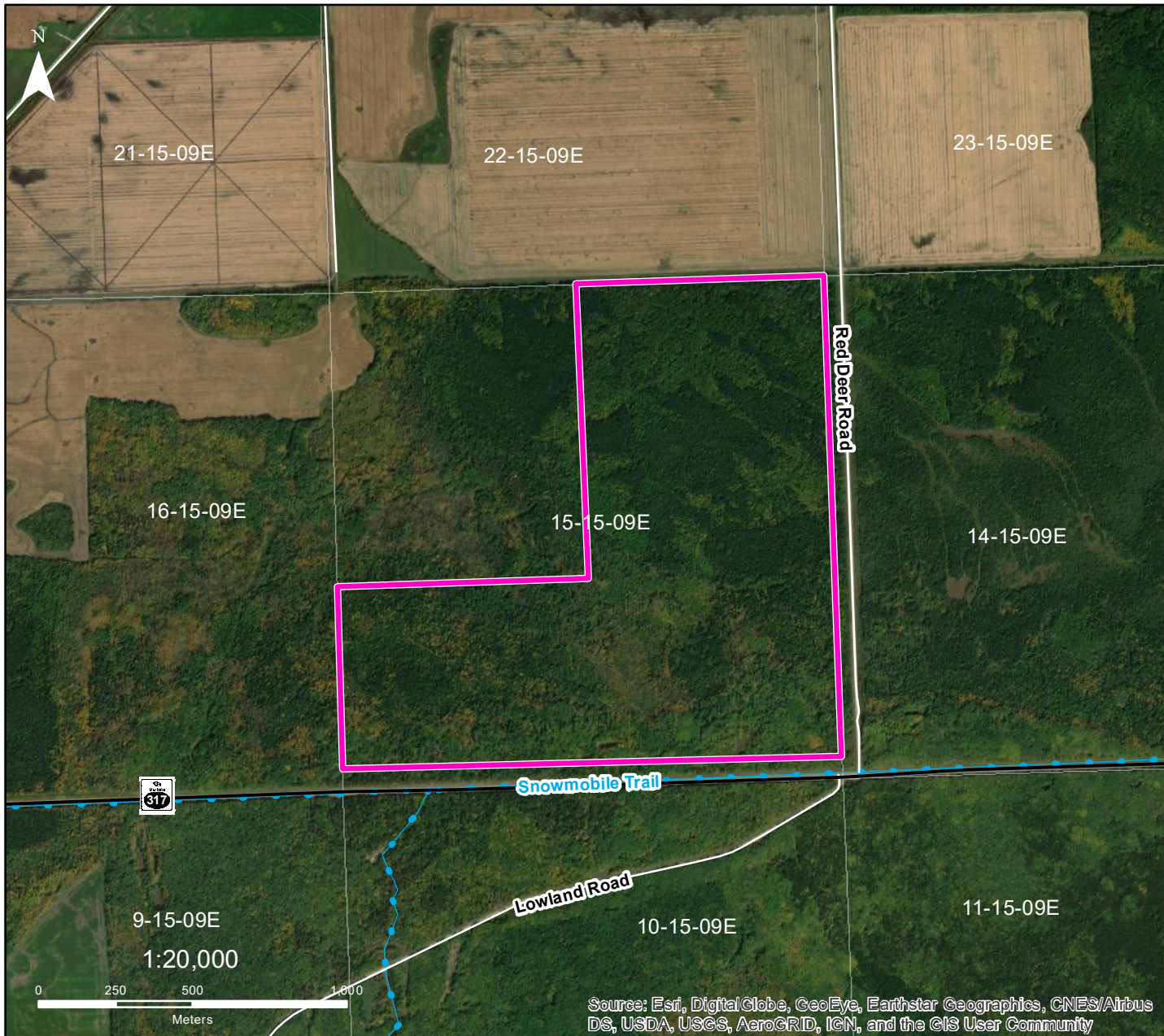
Any species (excluding Elm), green or dry, can be removed from the harvest areas. White Birch has a maximum harvest limit of 5m3

INFO: Do not leave debris on snowmobile trail. Winter access only.

NAD1983 UTM ZONE 14N

Forestry Branch
Agriculture and Resource Development

Dominant Species	Product	Species Condition	Season	Access Condition	Suggestion
Tamarack 30%	Fuel Wood	Green/Dead Standing	All	Fair	ATV/Snowmobile
White Birch 15%	Fuel Wood	Green	All	Fair	ATV/Snowmobile
Ash 10%	Fuel Wood	Green	All	Fair	ATV/Snowmobile



DESIGNATED CUTTING AREA 200

Lac Du Bonnet

- FMU 31 -

Sec 15 - Twp 15 - Rge 9E

 Cutting Area

Location:

From jct of Hwy 11 & Hwy 317, travel west on Hwy 317 for 16 km to Red Deer Road.

General Instructions:

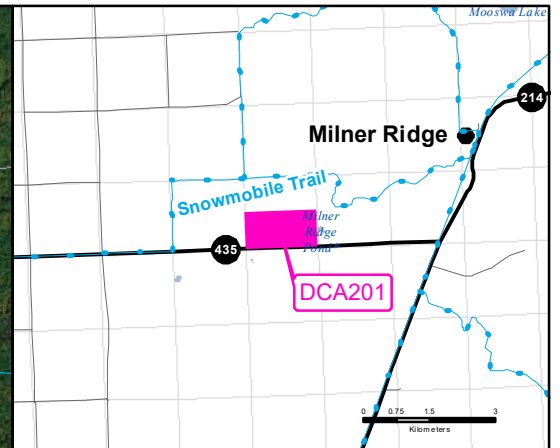
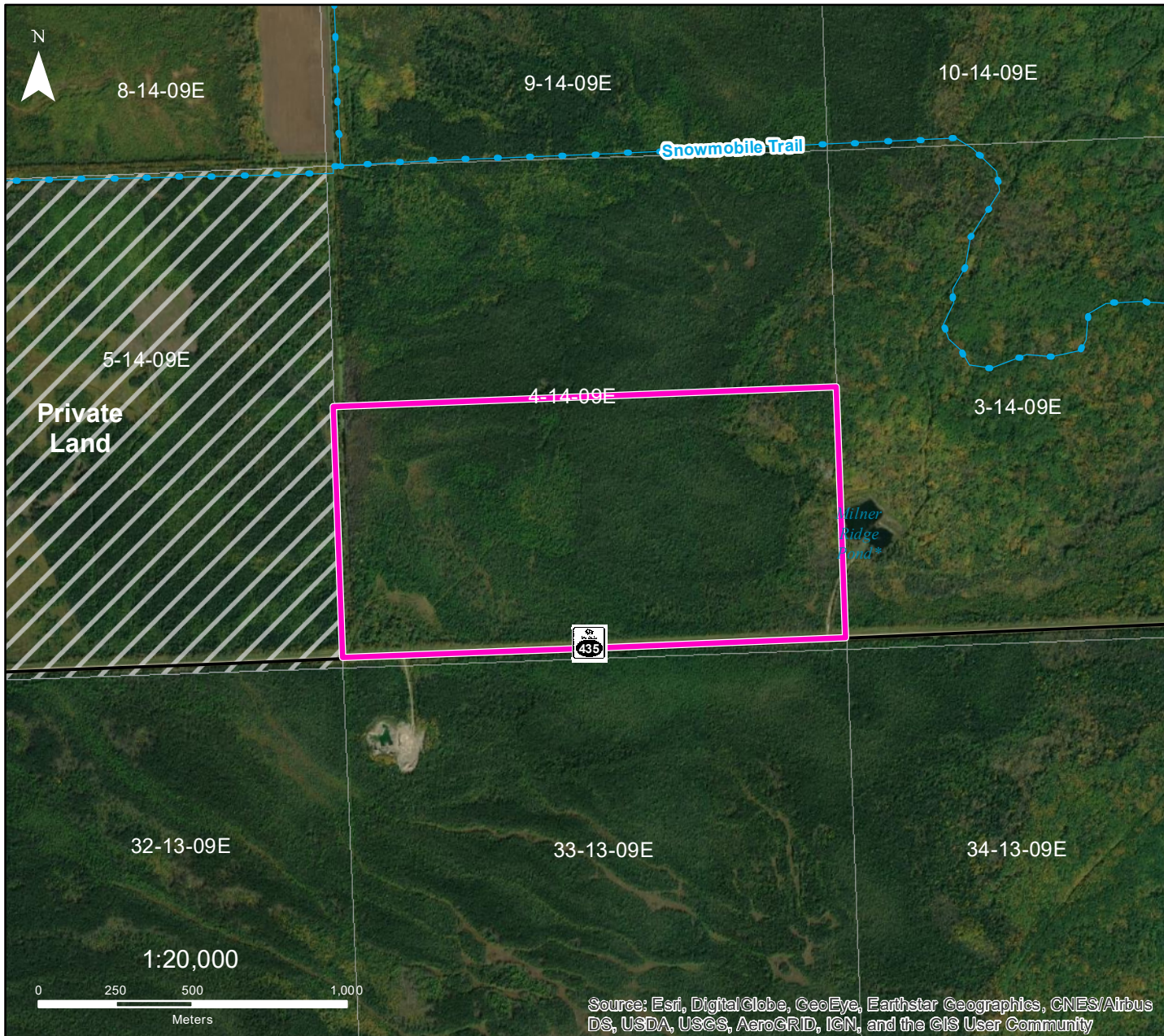
Any species (excluding Elm), green or dry, can be removed from the harvest areas. White Birch has a maximum harvest limit of 5m³

INFO: No harvesting within 50 m of Hwy 317.

NAD1983 UTM ZONE 14N

Forestry Branch
Agriculture and Resource Development

Dominant Species	Product	Species Condition	Season	Access Condition	Suggestion
Black Spruce 50%	Fuel Wood, Post & Rail	Green	Winter	Poor	Machine
Trembling Aspen 40%	Fuel Wood	Green	Summer/Winter	Fair/Poor	Machine
Jack Pine 10%	Fuel Wood	Green	Summer/Winter	Fair/Poor	Machine



DESIGNATED CUTTING AREA 201

Lac Du Bonnet

- FMU 24 -

Sec 4 - Twp 14 - Rge 9E

Cutting Area

Location:

From jct of Hwy 214 & Hwy 435, travel west on Hwy 435 for 2 km.

General Instructions:

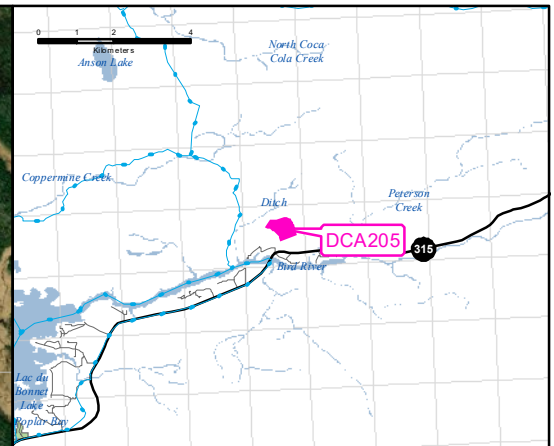
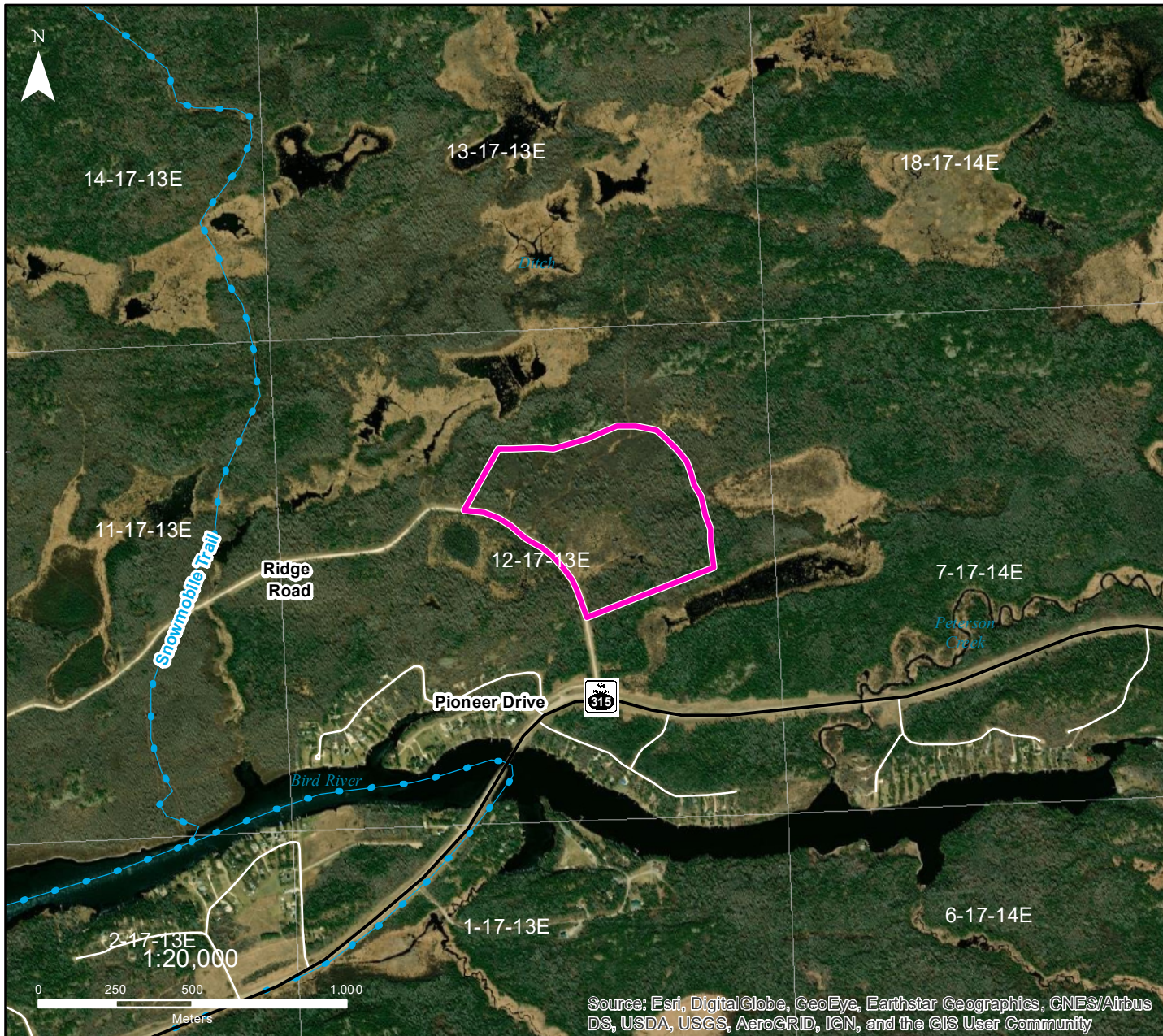
Any species (excluding Elm), green or dry, can be removed from the harvest areas. White Birch has a maximum harvest limit of 5m³

INFO:

NAD1983 UTM ZONE 14N

Forestry Branch
Agriculture and Resource Development

Dominant Species	Product	Species Condition	Season	Access Condition	Suggestion
Black Spruce 70%	Fuel Wood, Post & Rail	Green	Winter	Poor	Machine
Tamarack/Larch 20%	Fuel Wood, Post & Rail	Green	Winter	Poor	Machine
Trembling Aspen 10%	Fuel Wood	Green	Summer/Winter	Fair	



DESIGNATED CUTTING AREA 205

Lac Du Bonnet

- FMU 24 -

Sec 12 - Twp 17 - Rge 13E

 Cutting Area

Location:

From Bird River Bridge, travel north on Hwy 315 for 250 m to Pioneer Drive. Travel north and immediately turn east onto Ridge Road for 350 m.

General Instructions:

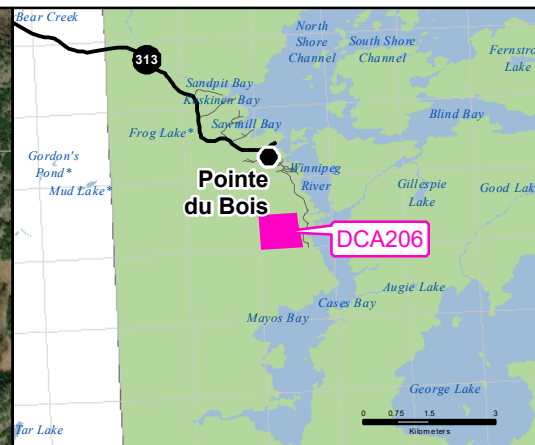
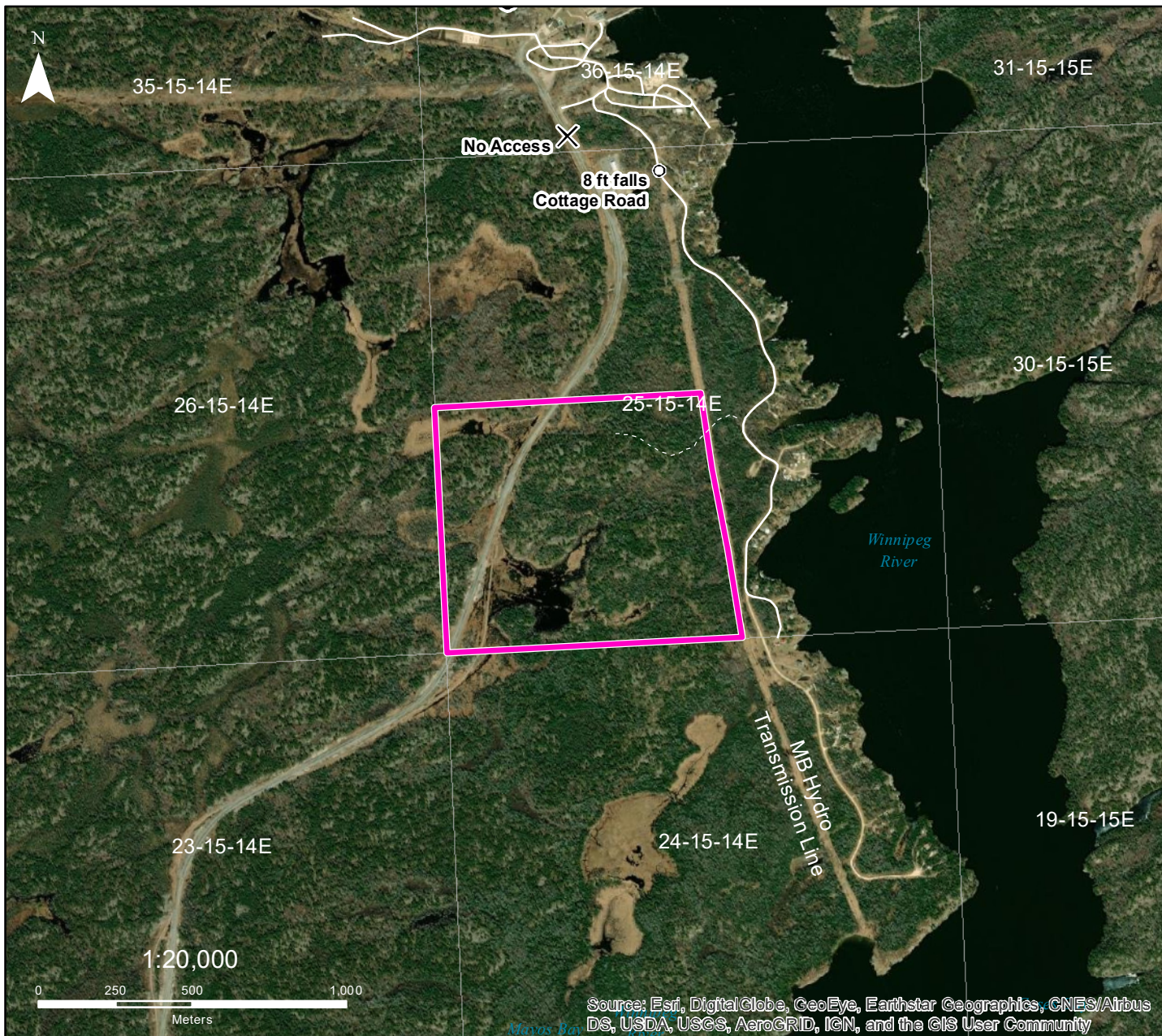
Any species (excluding Elm), green or dry, can be removed from the harvest areas. White Birch has a maximum harvest limit of 5m³

INFO: N/A

Dominant Species	Product	Species Condition	Season	Access Condition	Suggestion
Trembling Aspen 80%	Fuel Wood	Green	Summer/Winter	Fair/Poor	Machine

NAD1983 UTM ZONE 14N

Forestry Branch
Agriculture and Resource Development



DESIGNATED CUTTING AREA 206

Lac Du Bonnet

- FMU 24 -

Sec 25 - Twp 15 - Rge 14 E

 Cutting Area

Location:

From Pointe du Bois hydro dam, travel south for 2 km.

General Instructions:

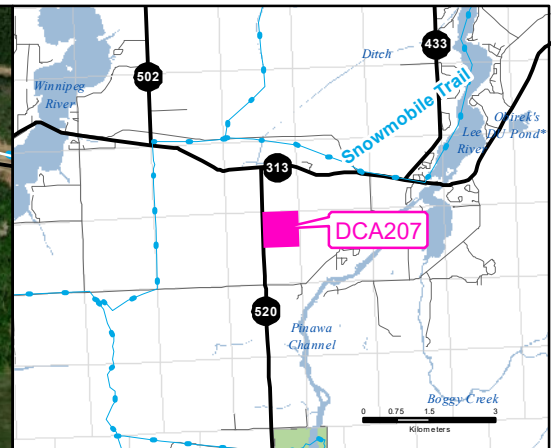
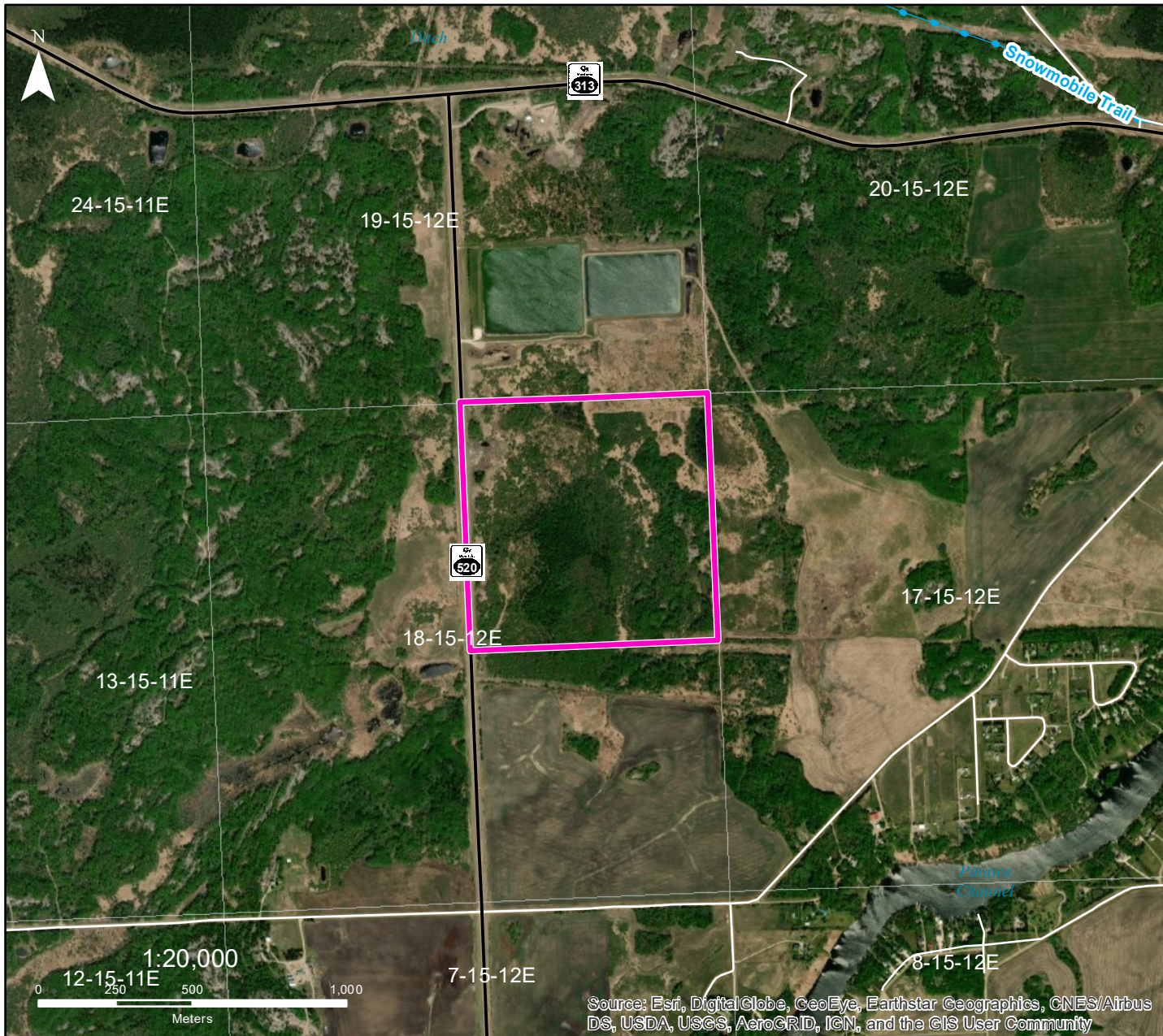
Any species (excluding Elm), green or dry, can be removed from the harvest areas. White Birch has a maximum harvest limit of 5m³

INFO: Access from trail and hydro line on east side only.

NAD1983 UTM ZONE 14N

Forestry Branch
Agriculture and Resource Development

Dominant Species	Product	Species Condition	Season	Access Condition	Suggestion
Jack Pine 90%	Fuel Wood	Green	Summer/Winter	Fair/Poor	ATV/Snowmobile
Trembling Aspen 10%	Fuel Wood	Green	Summer/Winter	Fair/Poor	ATV/Snowmobile



DESIGNATED CUTTING AREA 207

Lac Du Bonnet

- FMU 24 -

Sec 18 - Twp 15 - Rge 12 E

 Cutting Area

Location:

From jct of Hwy 313 & Hwy 520, travel south on Hwy 520 for 1 km.

General Instructions:

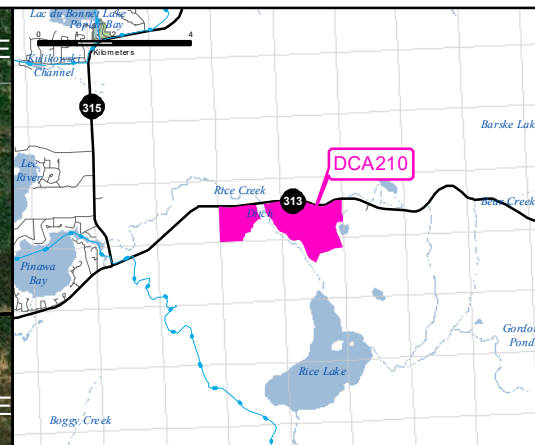
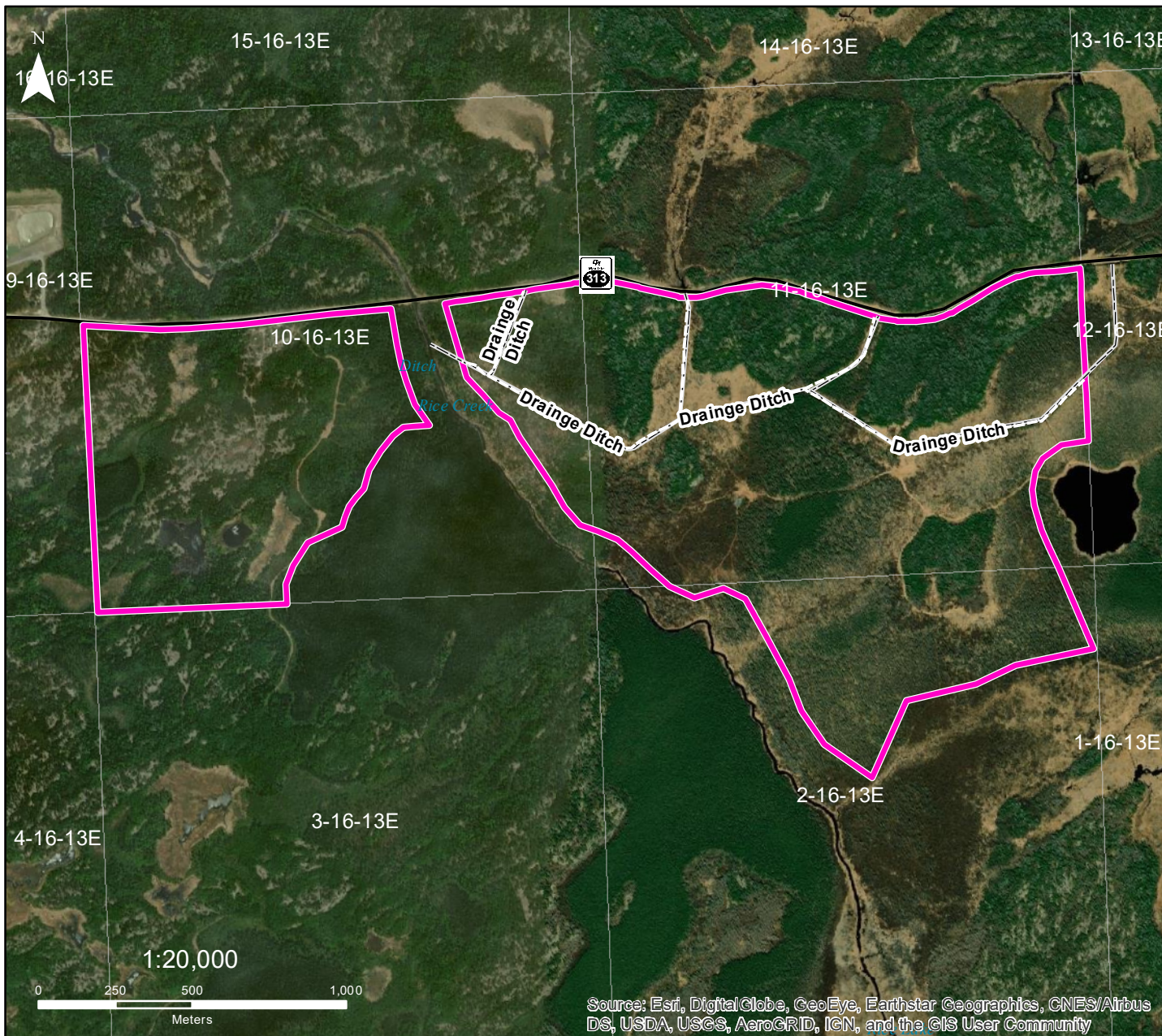
Any species (excluding Elm), green or dry, can be removed from the harvest areas. White Birch has a maximum harvest limit of 5m³

INFO:

NAD1983 UTM ZONE 14N

Forestry Branch
Agriculture and Resource Development

Dominant Species	Product	Species Condition	Season	Access Condition	Suggestion
Trembling Aspen 40%	Fuel Wood	Green	Winter	Fair	Machine
Tamarack/Larch 30%	Fuel Wood, Post & Rail	Green	Winter	Fair	Machine
Black Spruce 30%	Fuel Wood, Post & Rail	Green	Winter	Fair	Machine



DESIGNATED CUTTING AREA 210

Lac Du Bonnet

- FMU 31 -

Sec 11 - Twp 16 - Rge 13E

 Cutting Area

Location:

From jct of Hwy 313 & Hwy 315, travel east on Hwy 313 for 4.2 km.

General Instructions:

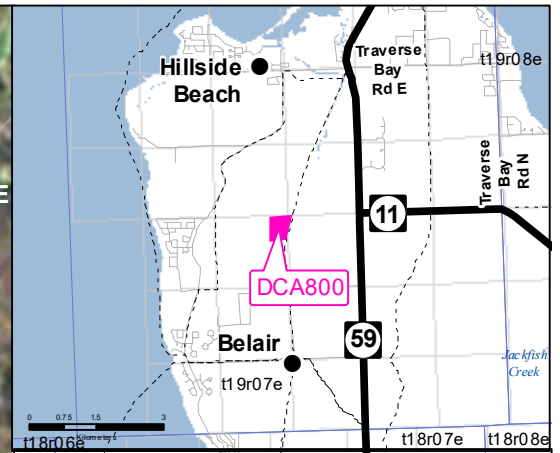
Any species (excluding Elm), green or dry, can be removed from the harvest areas. White Birch has a maximum harvest limit of 5m³

INFO: No rutting or soil disturbance. No crossing or harvesting within 50 m of drains.

NAD1983 UTM ZONE 14N


Forestry Branch
Agriculture and Resource Development

Dominant Species	Product	Species Condition	Season	Access Condition	Suggestion
Tamarack/Larch 70%	Fuel Wood, Post & Rail	60% Dead Standing	Summer	Fair	Truck/ATV
Black Spruce 20%	Fuel Wood, Post & Rail	Green	Summer	Fair	Truck/ATV
Jack Pine 10%	Fuel Wood	Green	Sumemr	Fair	Truck/ATV



DESIGNATED CUTTING AREA 800

Selkirk
- FMU 24 -
Sec 16 - Twp 19 - Rge 7E

 Cutting Area

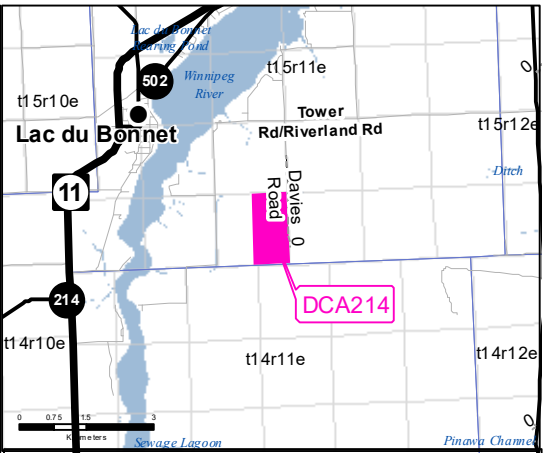
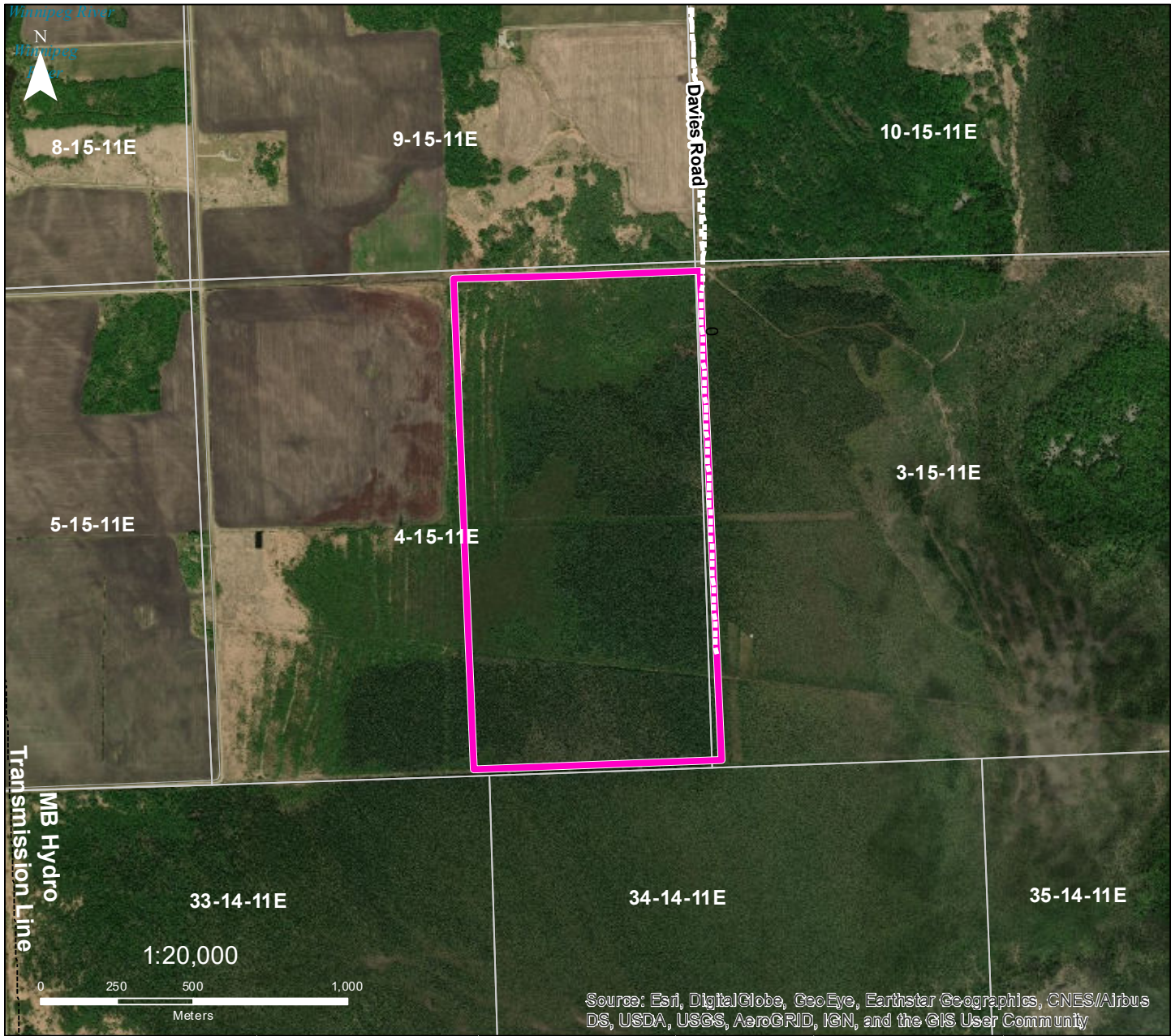
Location:
From jct of Hwy 59 & Belair Road, travel west on Belair Road for 1.5 km to gravel road. Travel north on gravel road for 2.7 km.

General Instructions:
Any species (excluding Elm), green or dry, can be removed from the harvest areas. White Birch has a maximum harvest limit of 5m3

INFO: Do not leave any debris on gravel road. NO truck access during winter.

NAD1983 UTM ZONE 14N
Forestry Branch
Agriculture and Resource Development

Dominant Species	Product	Species Condition	Season	Access Condition	Suggestion
Trembling Aspen 60%	Fuel Wood	Green	Summer/Winter	Fair	Truck/Snowmobile
Bur Oak 40%	Fuel Wood	Green	Summer/Winter	Fair	Truck/Snowmobile



DESIGNATED CUTTING AREA 214

Lac Du Bonnet

- FMU 24 -

Sec 4 - Twp 15 - Rge 11E

 Cutting Area

Location:

From jct of Hwy 313 & Hwy 520, travel south 2.5 km. Travel 6 km west on Tower Road (turns into Riverland Road) to Davies Road. Travel south on Davies Road for 1.6 km (road ends).

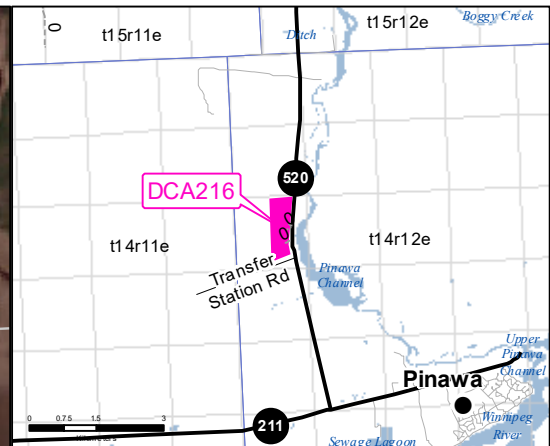
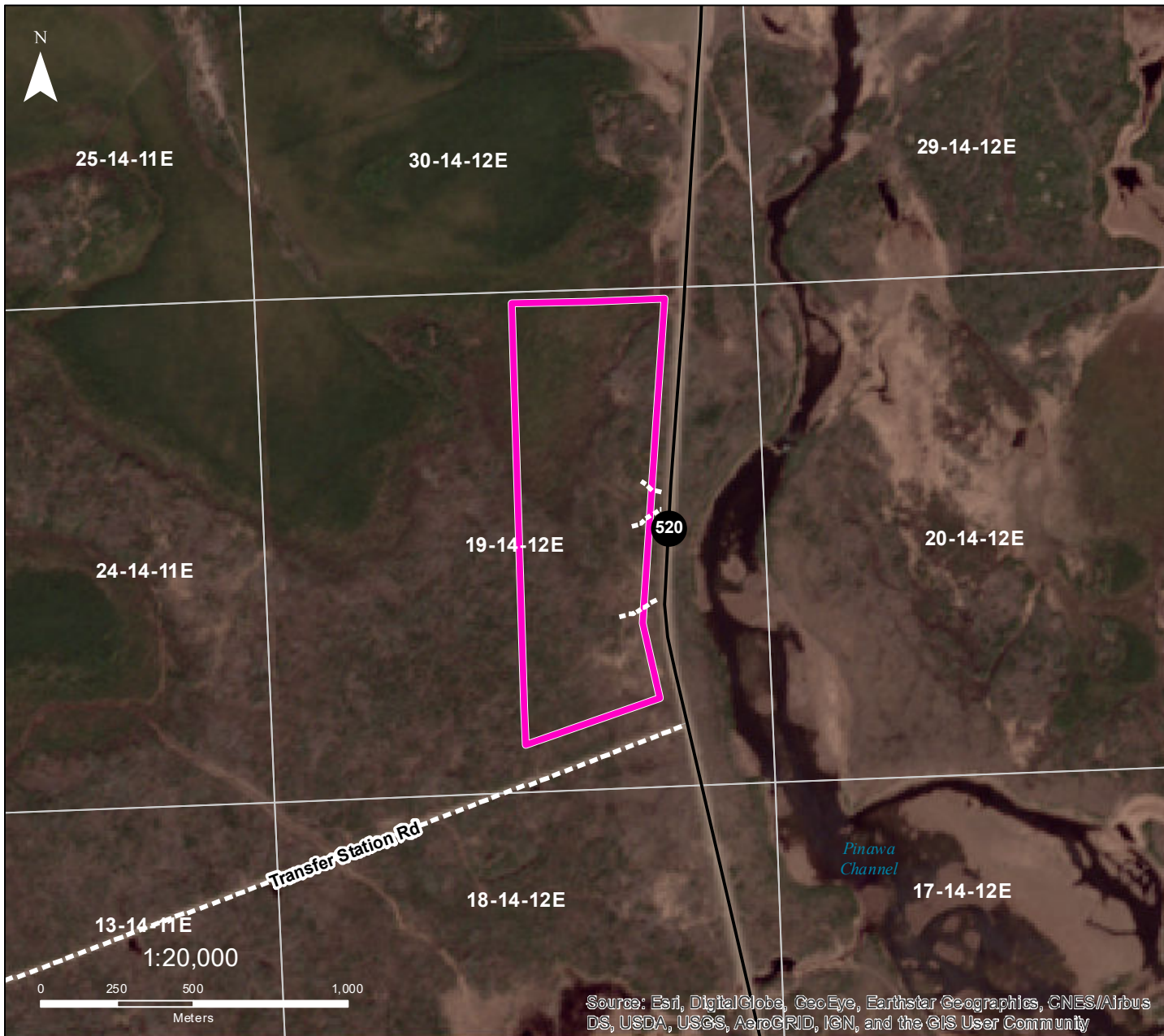
General Instructions:

Any species (excluding Elm), green or dry, can be removed from the harvest areas. White Birch has a maximum harvest limit of 5m3

INFO: No soil disturbance, trail damage or rutting.

NAD1983 UTM ZONE 14N
Forestry Branch
Agriculture and Resource Development

Dominant Species	Product	Species Condition	Season	Access Condition	Suggestion
Black Spruce 80%	Fuel Wood, Post & Rail	Green	Winter Frost	Poor	Machine
Tamarack/Larch 20%	Fuel Wood	Dead Standing	Winter Frost	Poor	Machine



DESIGNATED CUTTING AREA 216

Lac Du Bonnet

- FMU 24 -

Sec 19 - Twp 14 - Rge 12 E

 Cutting Area

Location:

From jct of Hwy 211 & Hwy 520, travel north on Hwy 520 for 3.5 km. Pinawa transfer station road is gated; no guarantee of access.

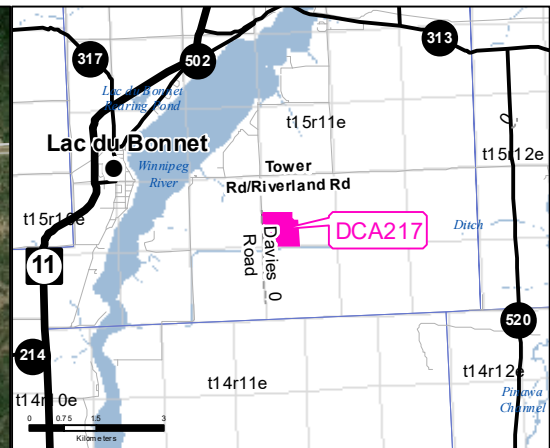
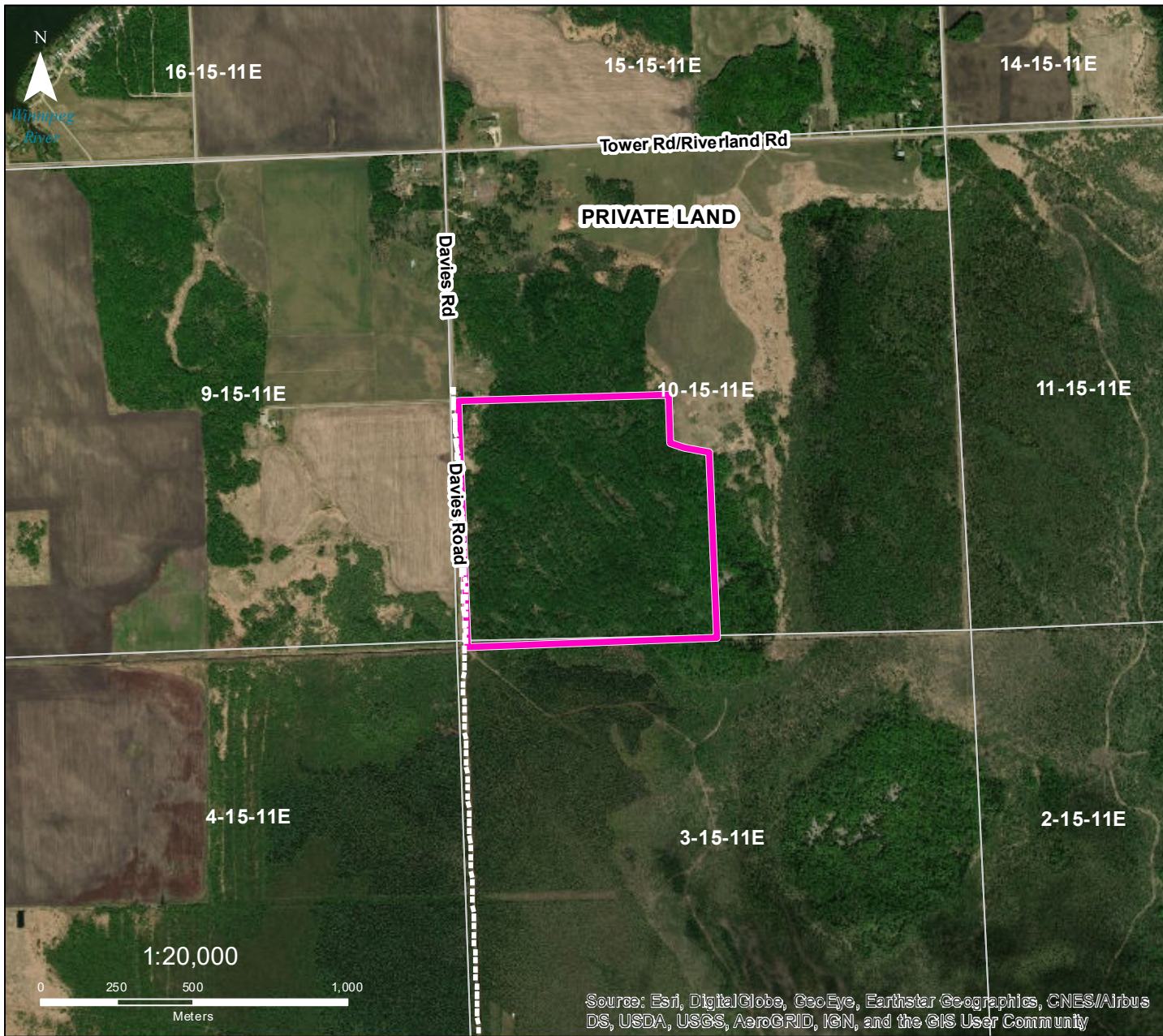
General Instructions:

Any species (excluding Elm), green or dry, can be removed from the harvest areas. White Birch has a maximum harvest limit of 5m3

INFO: No harvesting within 50 m of Hwy 520 or 100 m of transfer station road. Leave dead trees for bird nesting cavities.

NAD1983 UTM ZONE 14N
Forestry Branch
Agriculture and Resource Development

Dominant Species	Product	Species Condition	Season	Access Condition	Suggestion
Trembling Aspen 60%	Fuel Wood	Green	Summer/Winter	Fair	Machine
Black Spruce 30%	Fuel Wood, Post and Rail	Green	Winter Frost	Fair	Machine
Balsam Fir 10%	Christmas Trees/Boughs	Green	Summer/Winter	Fair	Machine



DESIGNATED CUTTING AREA 217

Lac Du Bonnet

- FMU 24 -

Sec 10 - Twp 15 - Rge 11 E

 Cutting Area

Location:

From jct of Hwy 313 & Hwy 520, travel south on Hwy 520 for 2.5 km. Travel 6 km west on Tower Road (turns into Riverland Road) to Davies Road. Travel south for 1 km.

General Instructions:

Any species (excluding Elm), green or dry, can be removed from the harvest areas. White Birch has a maximum harvest limit of 5m3

INFO:

NAD1983 UTM ZONE 14N
Forestry Branch
Agriculture and Resource Development

Source: Esri, DigitalGlobe, GeoEye, Earthstar Geographics, CNES/Airbus DS, USDA, USGS, AeroGRID, IGN, and the GIS User Community

Dominant Species	Product	Species Condition	Season	Access Condition	Suggestion
Trembling Aspen 100%	Fuel Wood	Green	Summer/Winter	Good/Fair	Machine