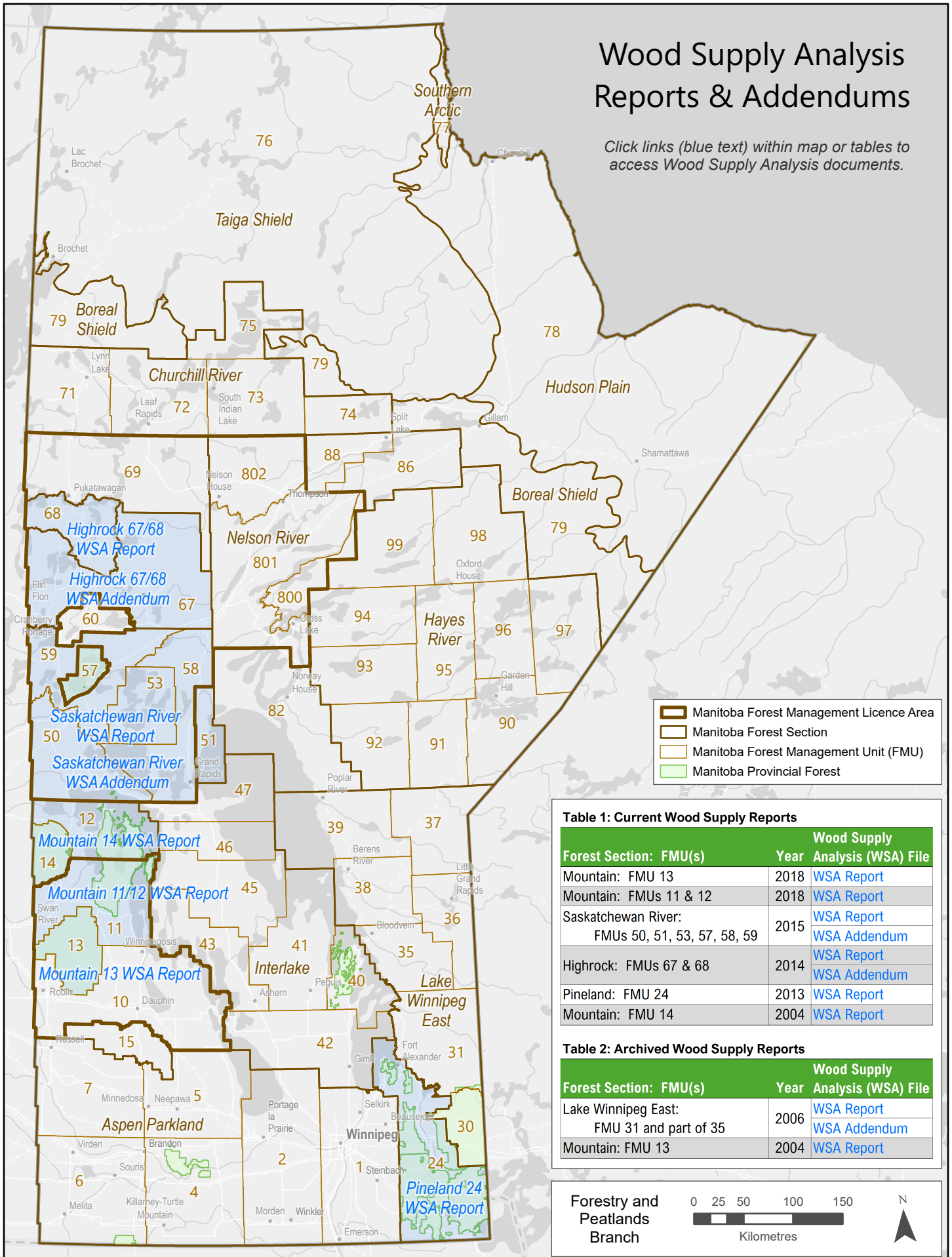


# Wood Supply Analysis Reports & Addendums

Click links (blue text) within map or tables to access Wood Supply Analysis documents.



**Table 1: Current Wood Supply Reports**

Forest Section: FMU(s)	Year	Wood Supply Analysis (WSA) File
Mountain: FMU 13	2018	<a href="#">WSA Report</a>
Mountain: FMUs 11 & 12	2018	<a href="#">WSA Report</a>
Saskatchewan River: FMUs 50, 51, 53, 57, 58, 59	2015	<a href="#">WSA Report</a> <a href="#">WSA Addendum</a>
Highrock: FMUs 67 & 68	2014	<a href="#">WSA Report</a> <a href="#">WSA Addendum</a>
Pineland: FMU 24	2013	<a href="#">WSA Report</a>
Mountain: FMU 14	2004	<a href="#">WSA Report</a>

**Table 2: Archived Wood Supply Reports**

Forest Section: FMU(s)	Year	Wood Supply Analysis (WSA) File
Lake Winnipeg East: FMU 31 and part of 35	2006	<a href="#">WSA Report</a> <a href="#">WSA Addendum</a>
Mountain: FMU 13	2004	<a href="#">WSA Report</a>

Forestry and Peatlands Branch

