

MANITOBA MARKETS

# Hog Prices



April 16, 2024

[Click here for definitions of how data is collected and calculated.](#)

## Exchange rates (Friday close)

1 US \$ = C \$1.3766

1 EURO = C \$1.4648

1 Yen = C \$0.00899

[Data source: Bank of Canada](#)

[Click to view the interactive hog dashboards for current and historical charts.](#)

## Manitoba Weighted Average Carcass Prices (including premiums and discounts)

### All In Weights C\$/100 kg

| Week                     | Week ending date | 2024          | 2023          | Change from<br>Previous Week | Change from<br>Previous Year |
|--------------------------|------------------|---------------|---------------|------------------------------|------------------------------|
| 12                       | 2024-03-22       | 228.13        | 220.07        | 1.5%                         | 3.7%                         |
| 13                       | 2024-03-29       | 229.01        | 214.93        | 0.4%                         | 6.5%                         |
| 14                       | 2024-04-05       | 233.43        | 209.30        | 1.9%                         | 11.5%                        |
| 15                       | 2024-04-12       | 242.76        | 205.56        | 4.0%                         | 18.1%                        |
| <b>Four week average</b> |                  | <b>233.33</b> | <b>212.47</b> | <b>-</b>                     | <b>9.8%</b>                  |

Source: Manitoba major processors.

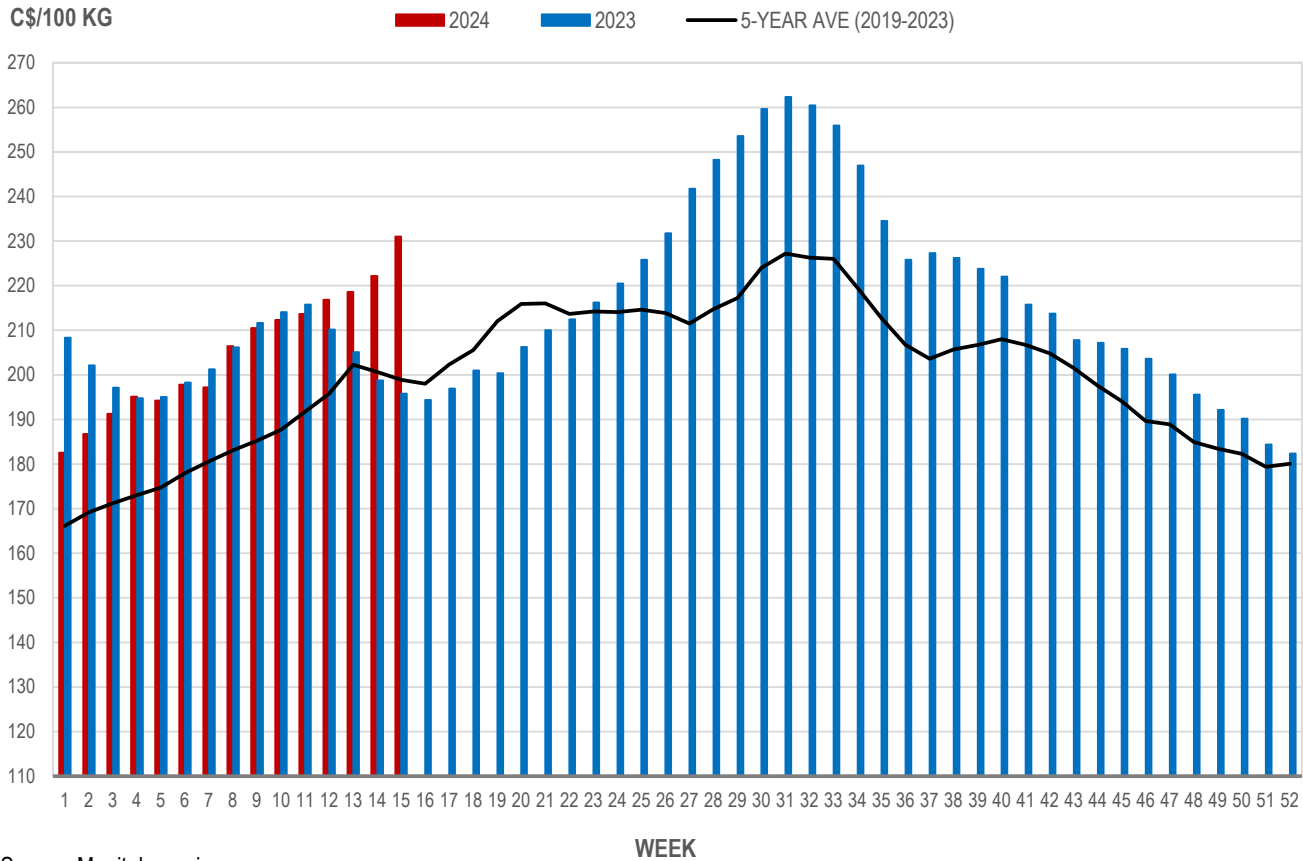


## Index 100, C\$/100 kg

| Week                     | Week ending date | 2024          | 2023          | Change from Previous Week | Change from Previous Year |
|--------------------------|------------------|---------------|---------------|---------------------------|---------------------------|
| 12                       | 2024-03-22       | 216.81        | 210.16        | 1.5%                      | 3.2%                      |
| 13                       | 2024-03-29       | 218.58        | 205.08        | 0.8%                      | 6.6%                      |
| 14                       | 2024-04-05       | 222.16        | 198.78        | 1.6%                      | 11.8%                     |
| 15                       | 2024-04-12       | 231.03        | 195.80        | 4.0%                      | 18.0%                     |
| <b>Four week average</b> |                  | <b>222.14</b> | <b>202.46</b> | <b>-</b>                  | <b>9.7%</b>               |

Source: Manitoba major processors.

## MANITOBA WEIGHTED AVERAGE INDEX 100 HOG PRICES WEEKLY



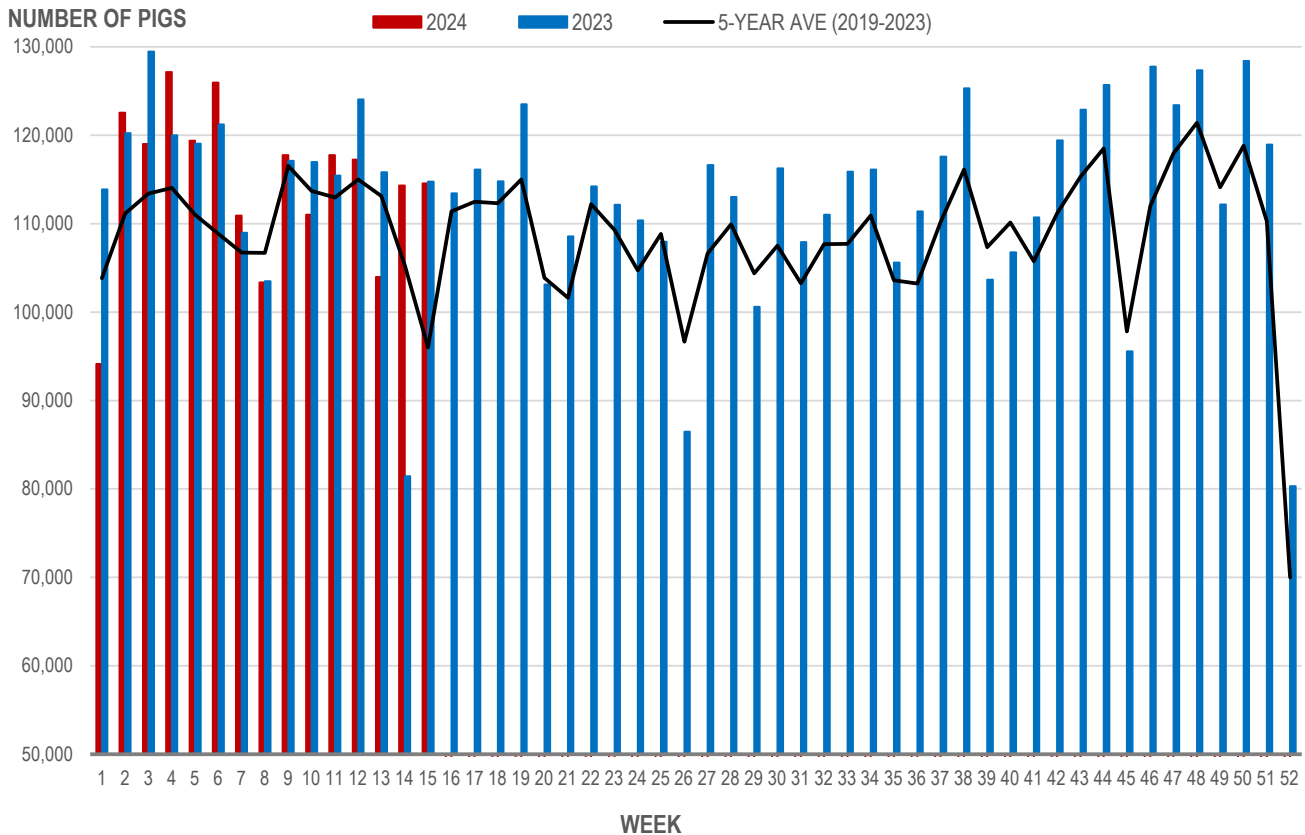
Source: Manitoba major processors

## Number of Pigs Processed by Major Processors

| Week                     | Week ending date | 2024           | 2023           | Change from Previous Week | Change from Previous Year |
|--------------------------|------------------|----------------|----------------|---------------------------|---------------------------|
| 12                       | 2024-03-22       | 117,252        | 124,046        | -0.4%                     | -5.5%                     |
| 13                       | 2024-03-29       | 103,987        | 115,836        | -11.3%                    | -10.2%                    |
| 14                       | 2024-04-05       | 114,335        | 81,454         | 10.0%                     | 40.4%                     |
| 15                       | 2024-04-12       | 114,544        | 114,766        | 0.2%                      | -0.2%                     |
| <b>Four week average</b> |                  | <b>112,530</b> | <b>109,026</b> | <b>-</b>                  | <b>3.2%</b>               |

Source: Manitoba major processors.

### NUMBER OF PIGS PROCESSED BY MAJOR PROCESSORS WEEKLY



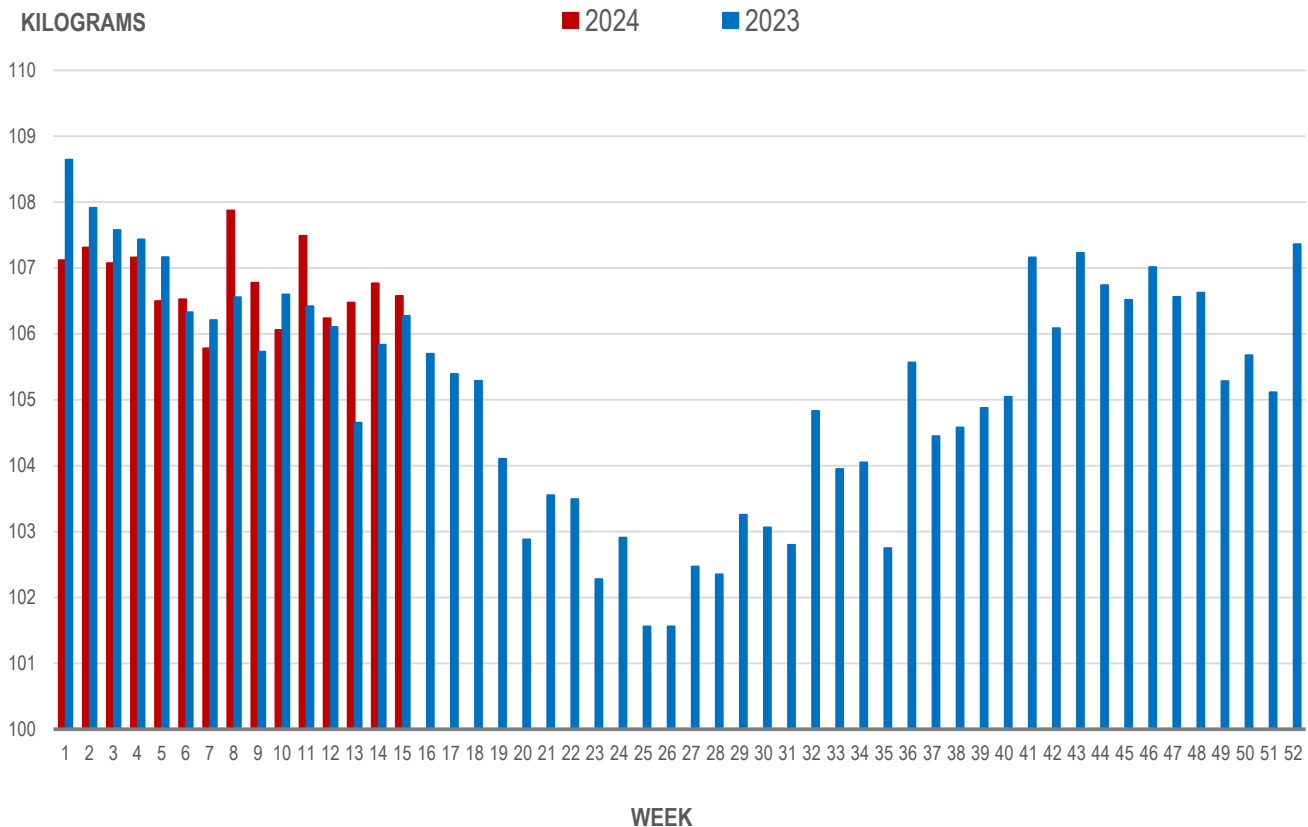
Source: Manitoba major processors

## Average Weight of Hogs Processed by Major Processors, Kg

| Week                     | Week ending date | 2024          | 2023          | Change from Previous Week | Change from Previous Year |
|--------------------------|------------------|---------------|---------------|---------------------------|---------------------------|
| 12                       | 2024-03-22       | 106.24        | 106.11        | -1.2%                     | 0.1%                      |
| 13                       | 2024-03-29       | 106.48        | 104.65        | 0.2%                      | 1.7%                      |
| 14                       | 2024-04-05       | 106.77        | 105.84        | 0.3%                      | 0.9%                      |
| 15                       | 2024-04-12       | 106.57        | 106.28        | -0.2%                     | 0.3%                      |
| <b>Four week average</b> |                  | <b>106.51</b> | <b>105.72</b> | <b>-</b>                  | <b>0.8%</b>               |

Source: Manitoba major processors.

## AVERAGE WEIGHT OF HOGS PROCESSED BY MAJOR PROCESSORS WEEKLY



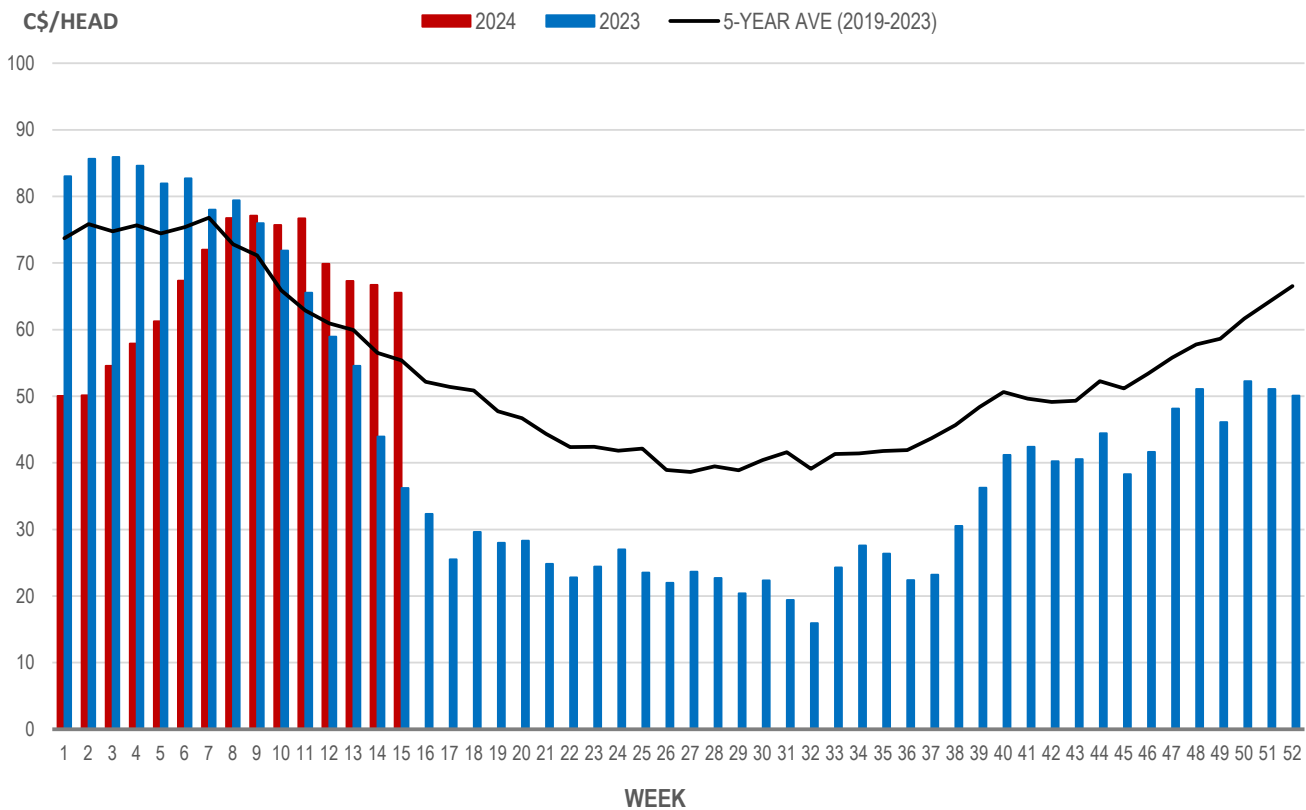
Source: Manitoba major processors

## Weaning Pigs (U.S. Total Composite Weighted Average Price per Head)

|                         | Formula and Cash Low, US\$/Head | Formula and Cash High, US\$/Head | Wtd Avg Price, US\$/Head | Wtd Avg Price, C\$/Head |
|-------------------------|---------------------------------|----------------------------------|--------------------------|-------------------------|
| Early Weaned (10-12 lb) | 34.00                           | 61.20                            | 47.61                    | 65.54                   |
| Feeder Pigs (40 lb)     | 92.00                           | 110.00                           | 103.01                   | 141.80                  |

Source: USDA, AMS

### EARLY WEANED PIGS (U.S. TOTAL COMPOSITE WEIGHTED AVERAGE PRICE PER HEAD) WEEKLY



Source: USDA, AMS

### Contact us

- [www.manitoba.ca/agriculture/markets-and-statistics/](http://www.manitoba.ca/agriculture/markets-and-statistics/)
- Email us at [industryintelligence@gov.mb.ca](mailto:industryintelligence@gov.mb.ca)
- Follow us on X @MBGovAg

