

MANITOBA MARKETS

Hog Prices



May 31, 2022

For definitions of how data is collected and calculated, please see

[MANITOBA MARKETS DEFINITIONS AND METHODOLOGIES](#)

Exchange rates (Friday close)

1 US \$ = C \$1.2738

1 EURO = C \$1.3656

1 Yen = C \$0.01003

<https://www.bankofcanada.ca/rates/exchange/daily-exchange-rates/>

View the interactive hog dashboards for current and historical charts:

<https://www.gov.mb.ca/agriculture/markets-and-statistics/livestock-statistics/livestock-market-prices-current.html>

Manitoba Weighted Average Carcass Prices (including premiums and discounts)

All In Weights C\$/100 kg

| Week | Week ending date | 2022 | 2021 | Change from Previous Week | Change from Previous Year |
|--------------------------|------------------|---------------|---------------|---------------------------|---------------------------|
| 18 | 2022-05-06 | 252.60 | 242.31 | -0.8% | 4.2% |
| 19 | 2022-05-13 | 255.27 | 245.24 | 1.1% | 4.1% |
| 20 | 2022-05-20 | 252.37 | 245.72 | -1.1% | 2.7% |
| 21 | 2022-05-27 | 256.18 | 241.42 | 1.5% | 6.1% |
| Four week average | | 254.10 | 243.67 | - | 4.3% |

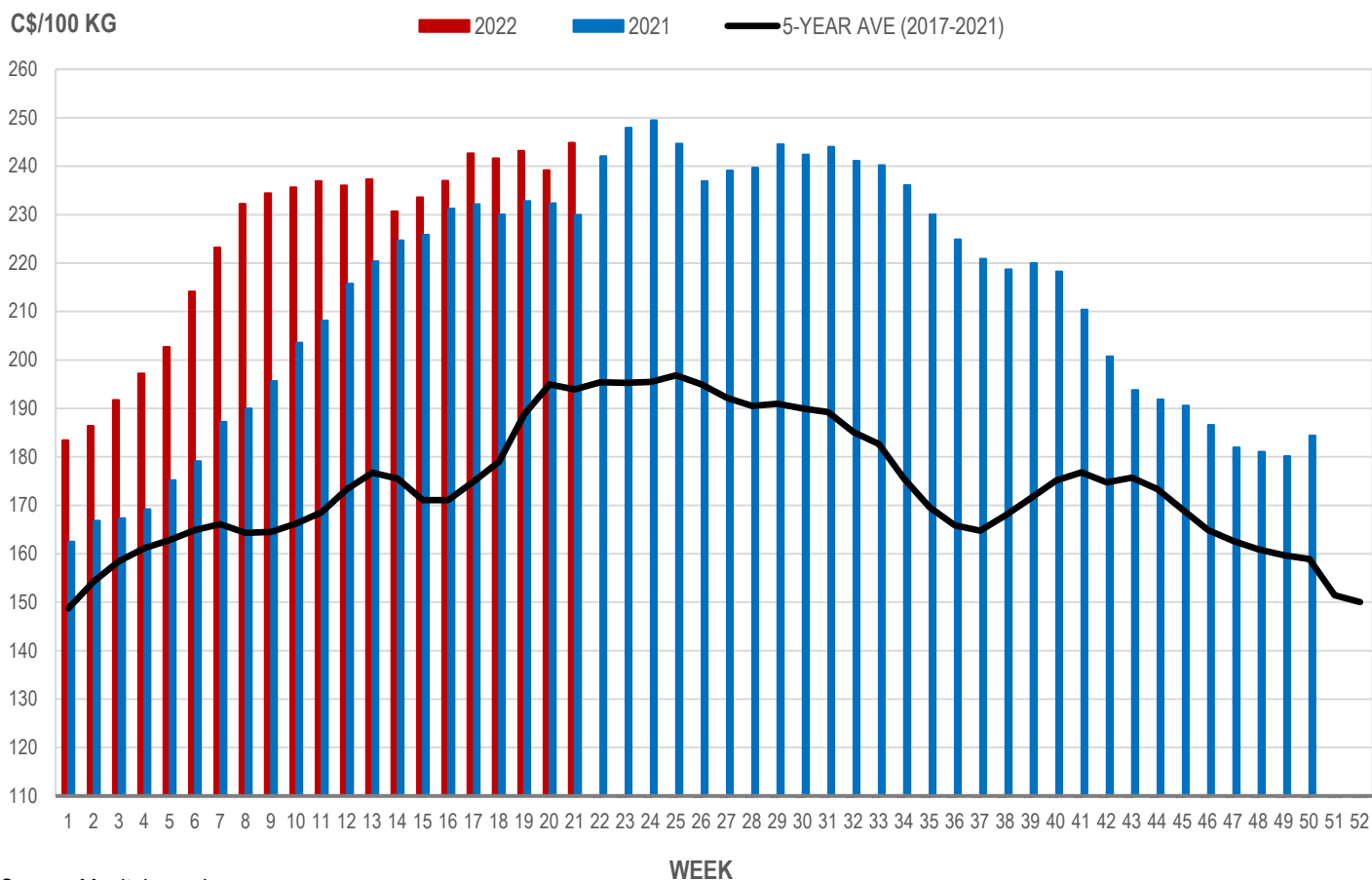
Source: Manitoba major processors.

Index 100, C\$/100 kg

| Week | Week ending date | 2022 | 2021 | Change from Previous Week | Change from Previous Year |
|--------------------------|------------------|---------------|---------------|---------------------------|---------------------------|
| 18 | 2022-05-06 | 241.62 | 230.04 | -0.4% | 5.0% |
| 19 | 2022-05-13 | 243.17 | 232.79 | 0.6% | 4.5% |
| 20 | 2022-05-20 | 239.17 | 232.36 | -1.6% | 2.9% |
| 21 | 2022-05-27 | 244.85 | 229.97 | 2.4% | 6.5% |
| Four week average | | 242.20 | 231.29 | - | 4.7% |

Source: Manitoba major processors.

MANITOBA WEIGHTED AVERAGE INDEX 100 HOG PRICES WEEKLY



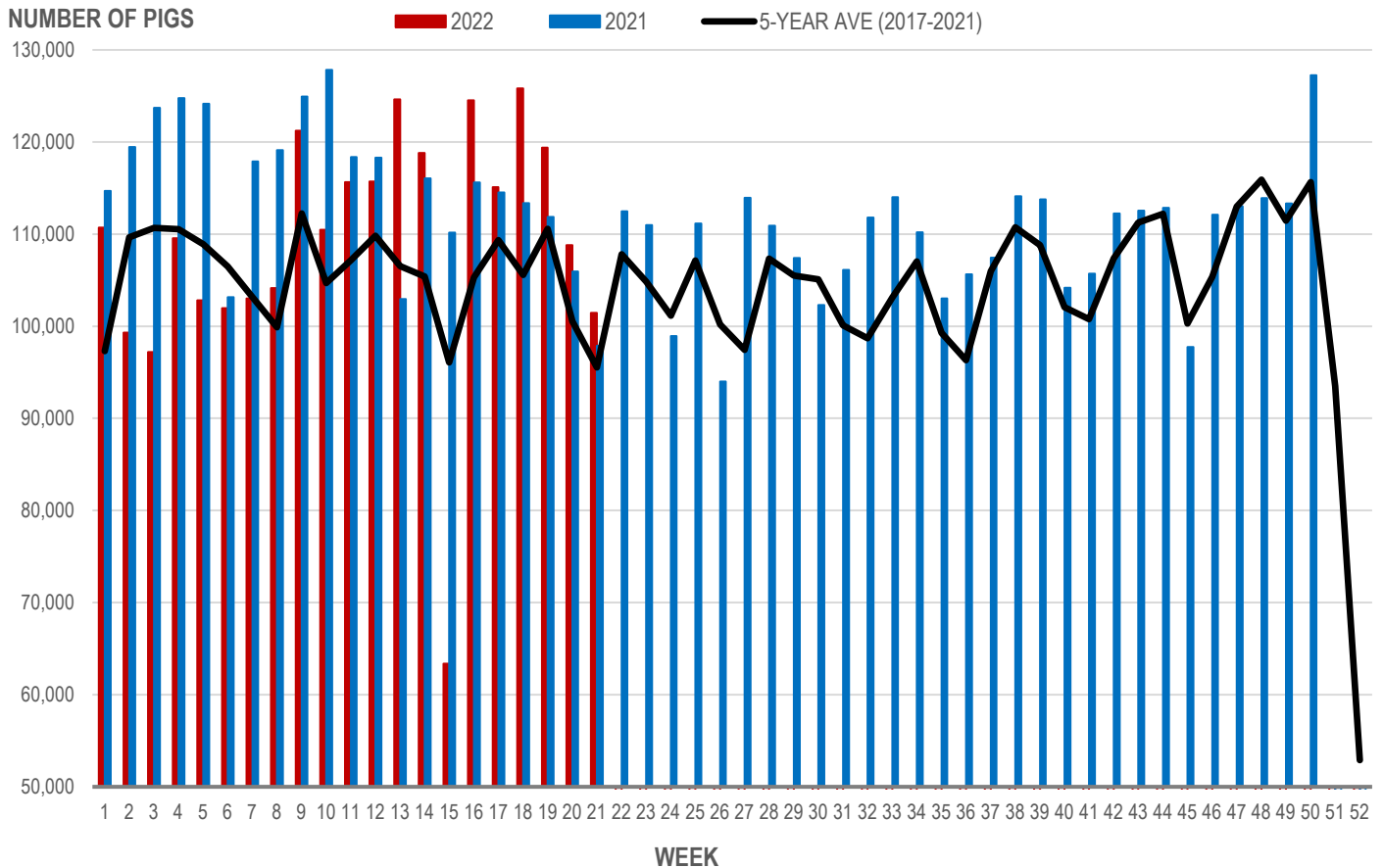
Source: Manitoba major processors

Number of Pigs Processed by Major Processors

| Week | Week ending date | 2022 | 2021 | Change from Previous Week | Change from Previous Year |
|--------------------------|------------------|----------------|----------------|---------------------------|---------------------------|
| 18 | 2022-05-06 | 125,833 | 113,353 | 9.3% | 11.0% |
| 19 | 2022-05-13 | 119,405 | 111,852 | -5.1% | 6.8% |
| 20 | 2022-05-20 | 108,796 | 105,960 | -8.9% | 2.7% |
| 21 | 2022-05-27 | 101,451 | 97,873 | -6.8% | 3.7% |
| Four week average | | 113,871 | 107,260 | - | 6.2% |

Source: Manitoba major processors.

NUMBER OF PIGS PROCESSED BY MAJOR PROCESSORS WEEKLY



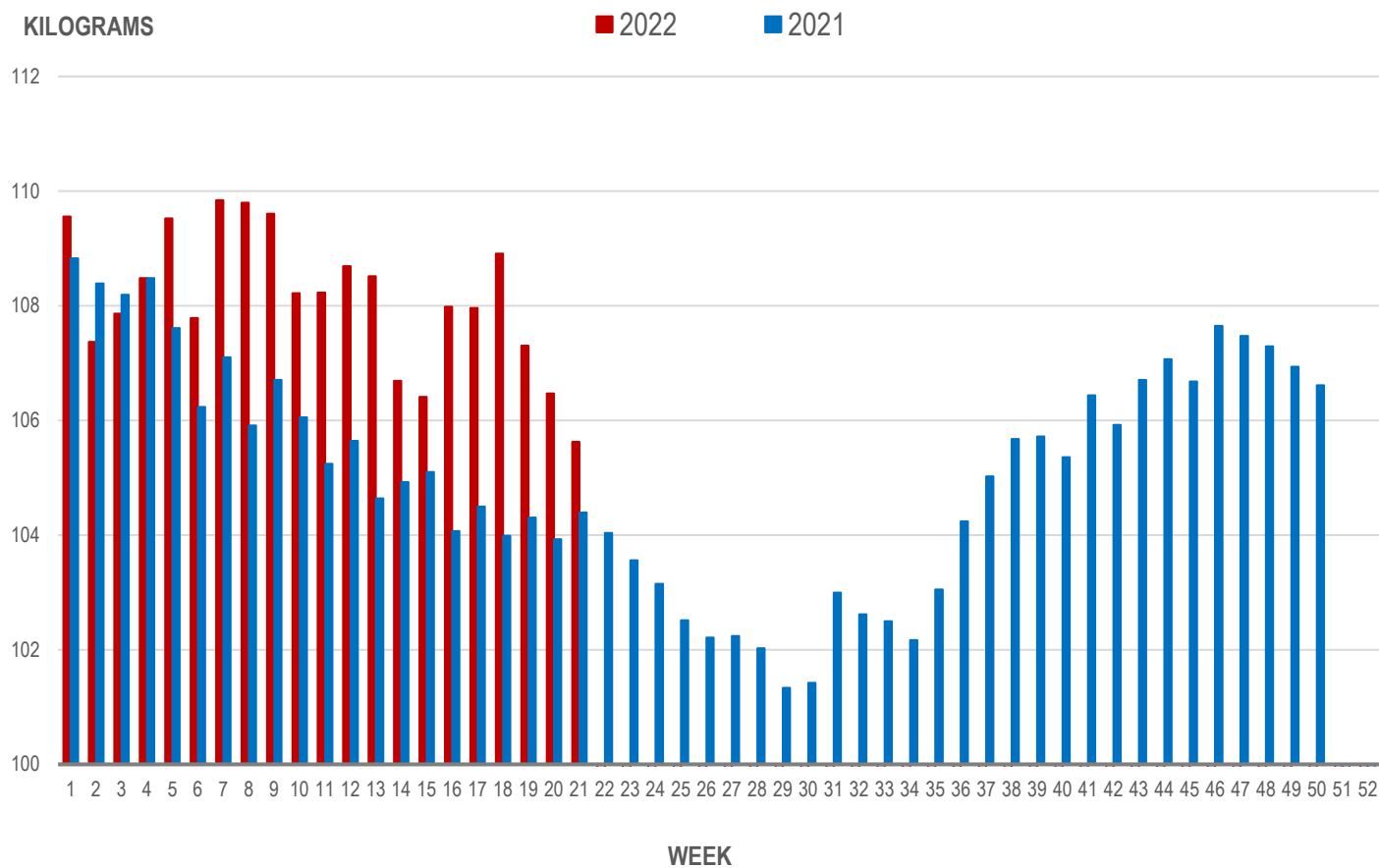
Source: Manitoba major processors

Average Weight of Hogs Processed by Major Processors, Kg

| Week | Week ending date | 2022 | 2021 | Change from Previous Week | Change from Previous Year |
|--------------------------|------------------|---------------|---------------|---------------------------|---------------------------|
| 18 | 2022-05-06 | 108.91 | 103.99 | 0.9% | 4.7% |
| 19 | 2022-05-13 | 107.30 | 104.30 | -1.5% | 2.9% |
| 20 | 2022-05-20 | 106.47 | 103.93 | -0.8% | 2.5% |
| 21 | 2022-05-27 | 105.62 | 104.39 | -0.8% | 1.2% |
| Four week average | | 107.08 | 104.15 | - | 2.8% |

Source: Manitoba major processors.

AVERAGE WEIGHT OF HOGS PROCESSED BY MAJOR PROCESSORS WEEKLY



Source: Manitoba major processors

CME FUTURES PRICES, US\$/lb, Friday settle price

| | LEAN HOG | Change * | PORK CUTOUT | Change * |
|-----------|-----------------|-----------------|--------------------|-----------------|
| Jun 2022 | 110.40 | 1.53 | 114.50 | 0.15 |
| July 2022 | 111.73 | 2.72 | 117.03 | 2.05 |
| Aug 2022 | 110.45 | 2.28 | 117.88 | 1.38 |
| Oct 2022 | 94.78 | 2.33 | 106.13 | 2.00 |
| Dec 2022 | 86.98 | 2.50 | 97.50 | 1.45 |
| Feb 2023 | 90.33 | 1.73 | 100.00 | 1.08 |
| Apr 2023 | 93.63 | 0.78 | 100.15 | 1.08 |
| May 2023 | 97.03 | 0.23 | 102.68 | 1.08 |
| Jun 2023 | 101.65 | 0.70 | 109.38 | 1.08 |
| Jul 2023 | 101.75 | 1.00 | 108.13 | 1.08 |
| Aug 2023 | 100.48 | 0.77 | 107.60 | 1.07 |
| Oct 2023 | 87.33 | 0.78 | 98.40 | 1.08 |

Source: CME

* Price change from previous week, US\$

MAPLE LEAF Sig #4 - Contract Prices Top of Range

| | Sig #4 Price C\$/100 kg | Change * |
|-----------|--------------------------------|-----------------|
| July 2022 | 241.49 | 11.40 |
| Aug 2022 | 240.31 | 9.79 |
| Sep 2022 | 211.52 | 9.13 |
| Oct 2022 | 206.26 | 8.72 |
| Nov 2022 | 200.45 | 7.62 |
| Dec 2022 | 192.53 | 7.68 |
| Jan 2023 | 193.39 | 6.76 |
| Feb 2023 | 200.65 | 6.75 |

Source: HAMs Marketing

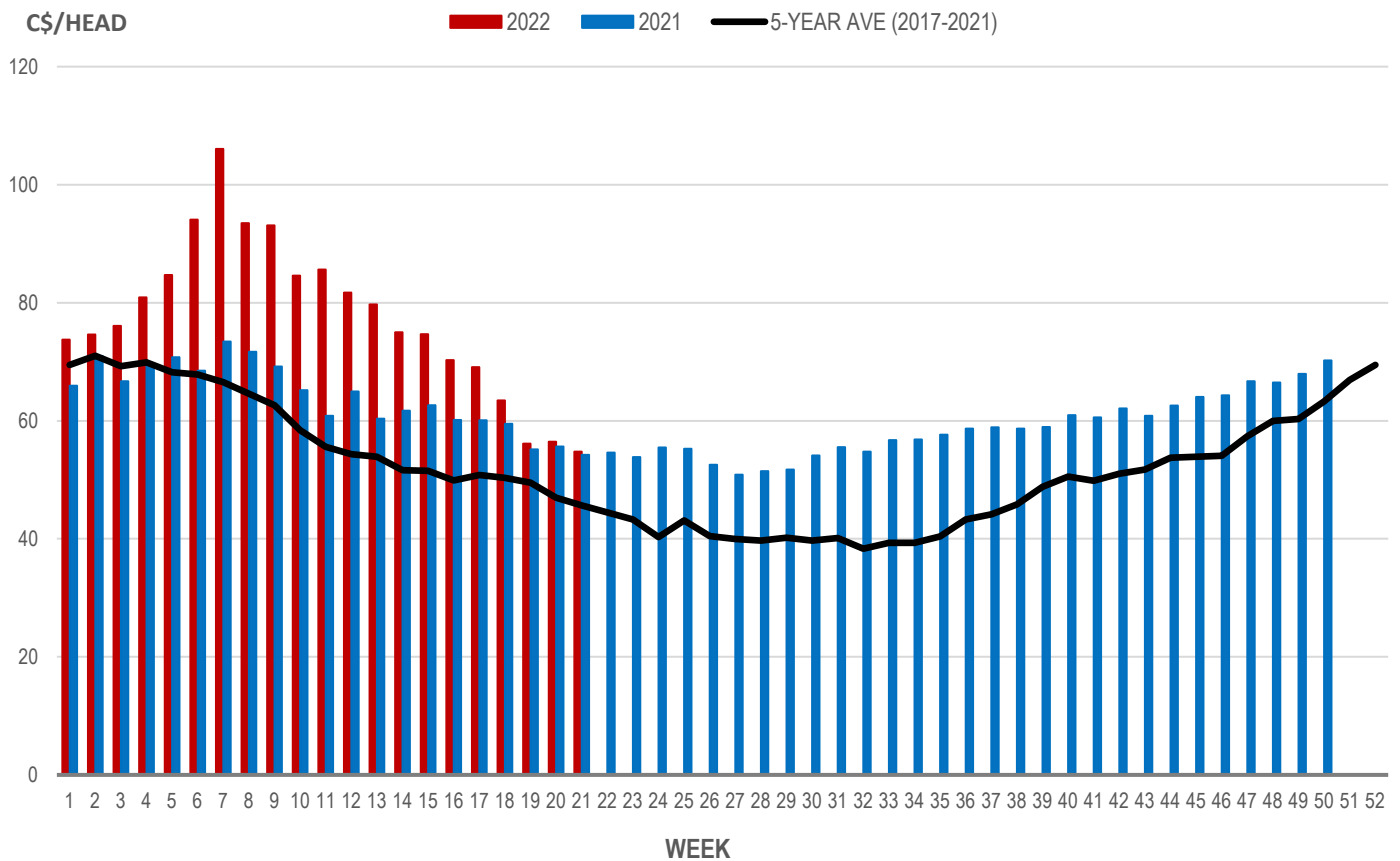
* Price change from previous week, C\$

Weaning Pigs (U.S. Total Composite Weighted Average Price per Head)

| | Formula and Cash Low, US\$/Head | Formula and Cash High, US\$/Head | Wtd Avg Price, US\$/Head | Wtd Avg Price, C\$/Head |
|-------------------------|------------------------------------|-------------------------------------|-----------------------------|----------------------------|
| Early Weaned (10-12 lb) | 26.00 | 54.75 | 43.02 | 54.80 |
| Feeder Pigs (40 lb) | 62.00 | 76.50 | 70.22 | 89.45 |

Source: USDA, AMS

EARLY WEANED PIGS (U.S. TOTAL COMPOSITE WEIGHTED AVERAGE PRICE PER HEAD) WEEKLY



Source: USDA, AMS

Contact us

Go to manitoba.ca/agriculture and click on Markets and Statistics

Email us at industryintelligence@gov.mb.ca

Follow us on Twitter @MBGovAg